


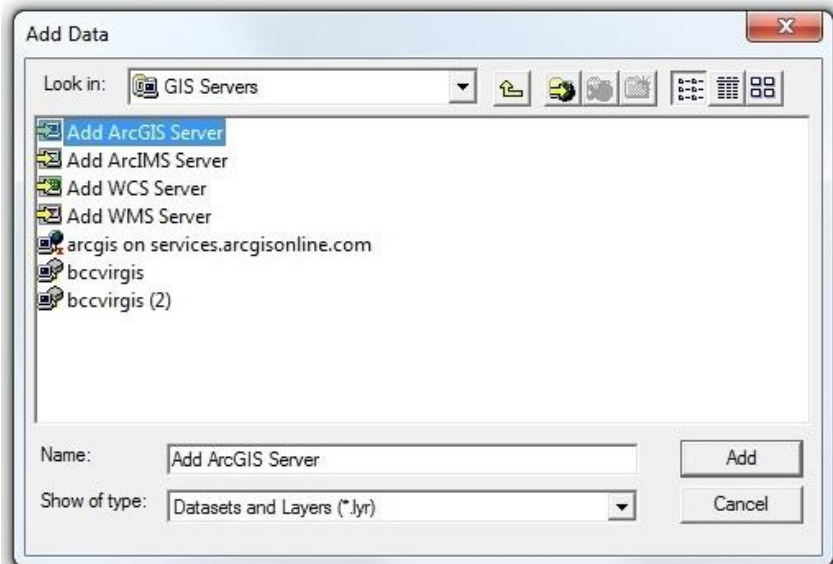
## Baldwin County ArcGIS Server Map Service

Connection Instructions:

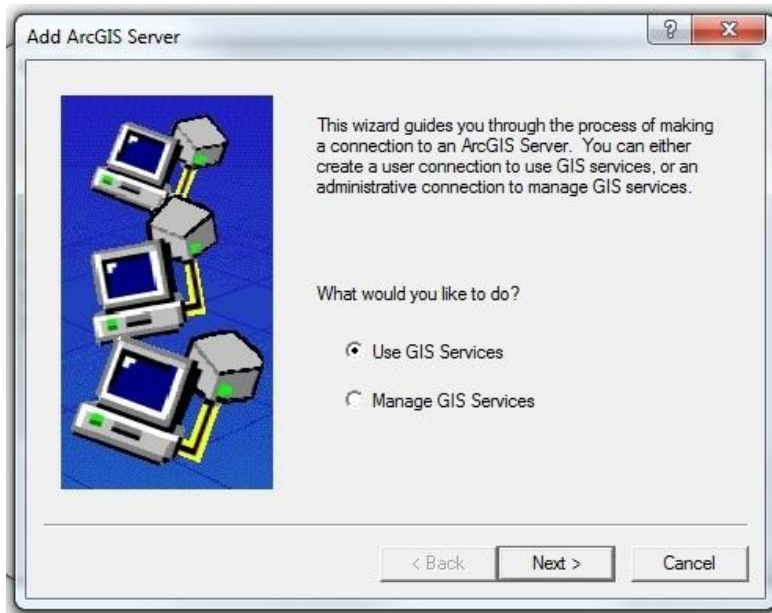
1. Open a new session in ArcGIS desktop (ArcInfo, ArcEditor, ArcMap). Click on the add data  icon in the Standard toolbar. Select the GIS Servers option as shown below.



2. Select the Add ArcGIS Server option as shown below:



3. Select Use GIS Services as shown below:

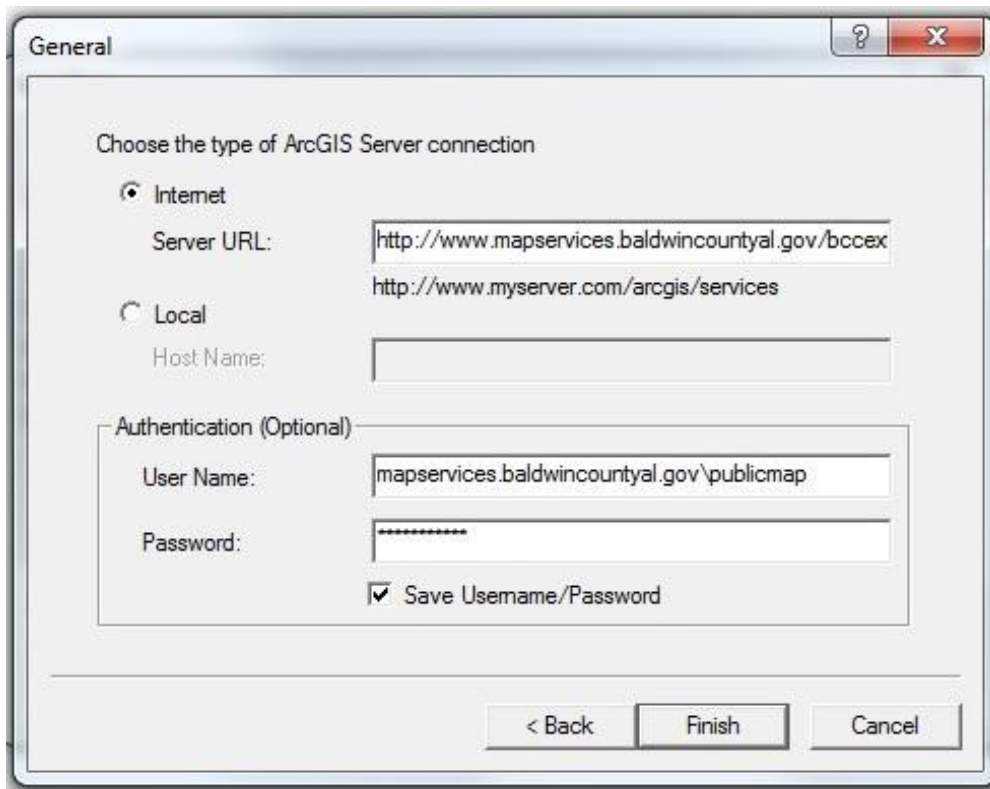


4. Select the Internet option and use the following connection properties:

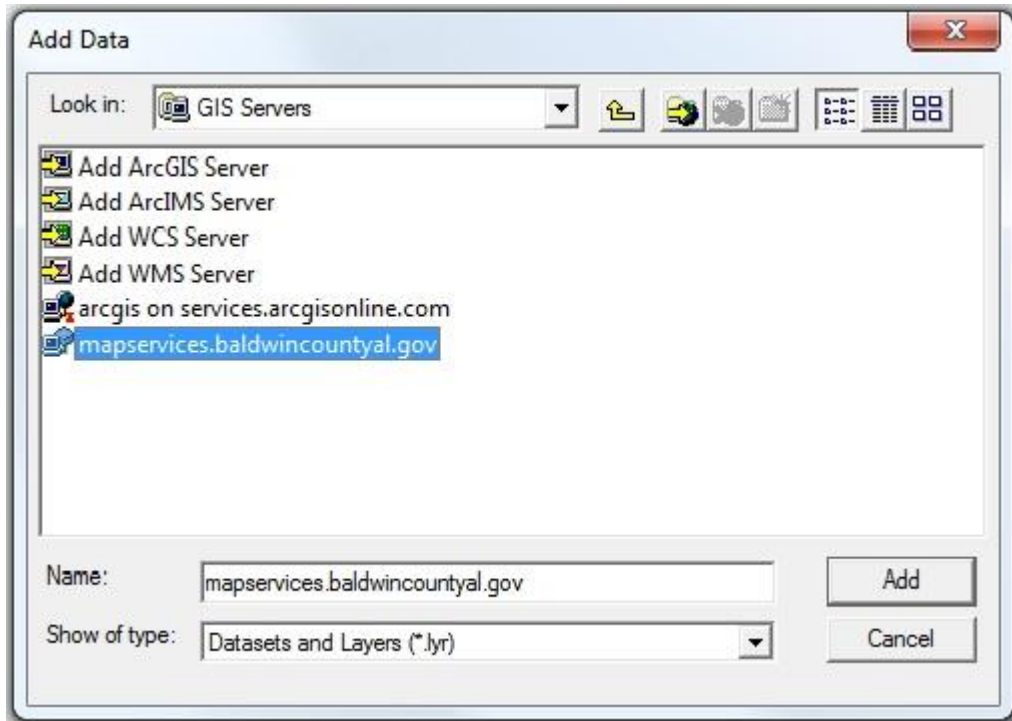
Server URL: <http://www.mapservices.baldwincountyal.gov/arcgis/services>

Username: mapservices.baldwincountyal.gov\publicmap

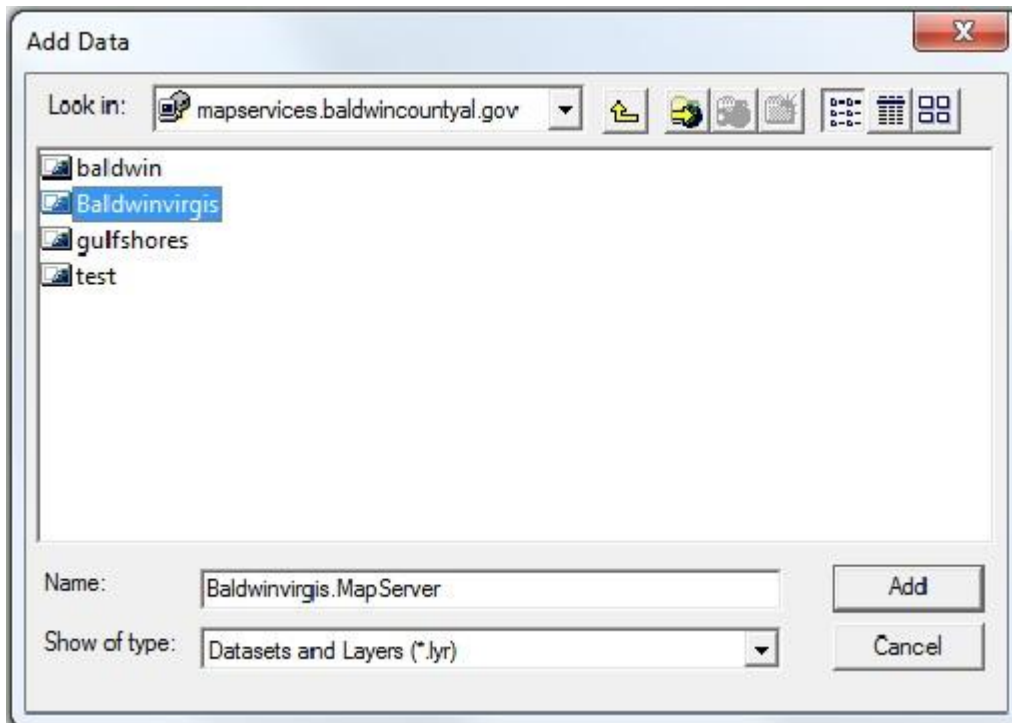
Password: baldwinmaps



5. Open the new ArcGIS Server connection.



6. Add the Baldwinvirgis service to your map.



The following layers are available:

1. Centerlines – Available at 1:100,000 scale
2. Potential Wetlands– Available at 1:24,000 scale
3. Zoning– Available at 1:40,000 scale
4. Parcels– Available at 1:10,000 scale
5. 1ft Contours– Available at 1:24,000 scale
6. 5ft Contours– Available at 1:24,000 scale
7. 2009 True Color Photography– Available at 1:24,000 scale
8. 2009 Color Infrared Photography– Available at 1:24,000 scale
9. Municipal Boundaries– Available at 1:24,000 scale
9. Baldwin County Boundary