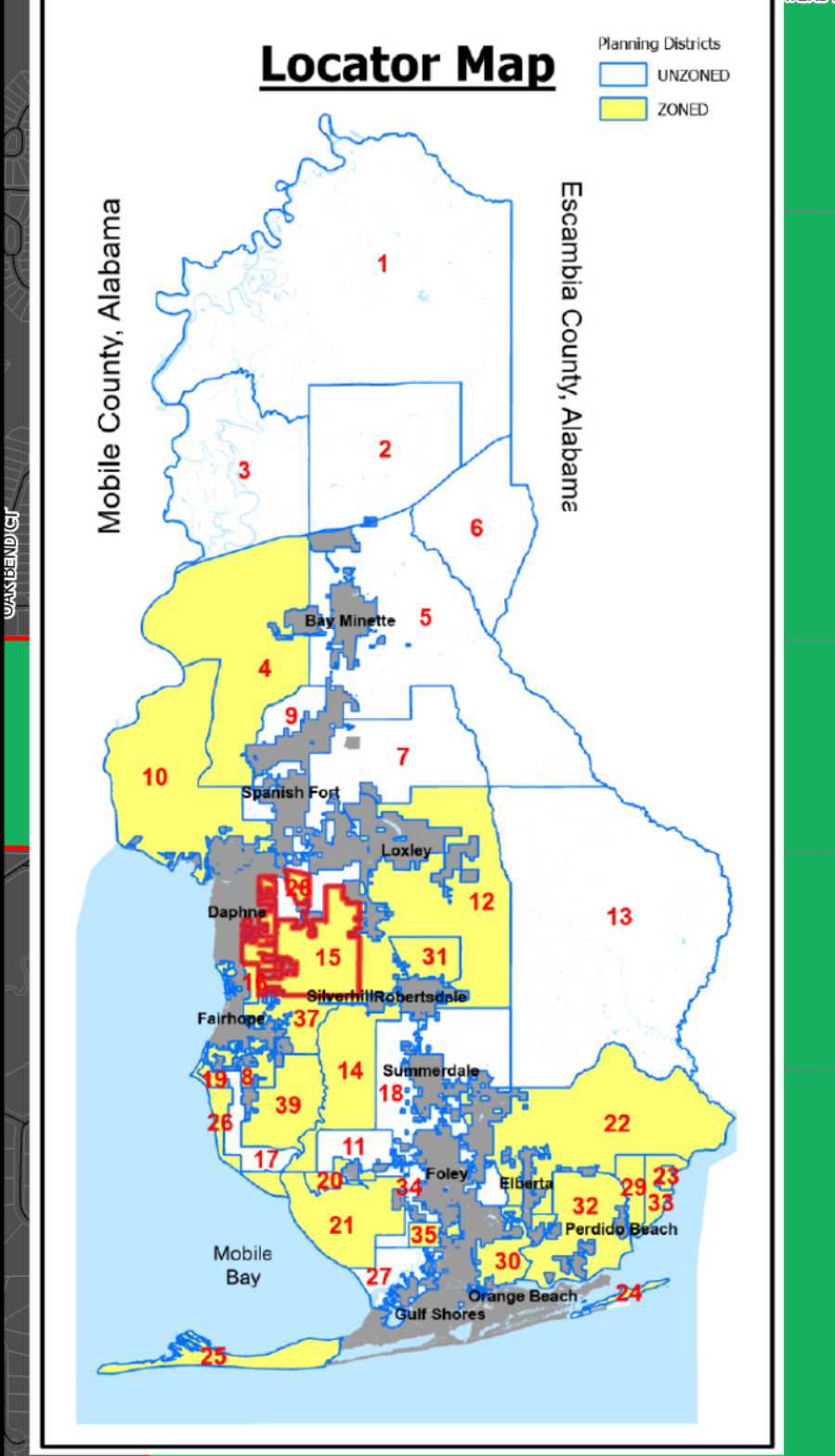


PLANNING DISTRICT 15 and 28



On February 21, 2006, a majority of qualified electors in Planning District 15 voted to institute County Zoning. On August 1, 2006, the County Commission adopted the Planning District 15 Zoning Map and Ordinances.

On October 13, 1992 a majority of qualified electors in Planning District 28 voted to institute County Zoning. On July 6, 1993, the County Commission adopted the Planning District 28 Zoning Map and Ordinances.



Legend		Zoning	
	Planning Districts		Rural District (RR)
	Water		Rural Agricultural District (RA)
	City Limits		Conservation Resource District (CR)
	Tax Parcels		Residential Single Family Estate District (RSF-E)
	911 Streets		Residential Single Family District (RSF-1)
	Paved		Residential Single Family District (RSF-2)
	Unpaved		Residential Single Family District (RSF-3)
			Residential Single Family District (RSF-4)
			Residential Two Family District (RTF-4)
			Residential Single Family District (RSF-6)
			Residential Two Family District (RTF-6)
			Residential Multiple Family District (RMF-6)
			High Density Residential District (HDR)
			Residential Manufacture Housing Park District (RMH)
			Base Community Zoning District (BCZ)
			Marine Recreation District (MR)
			Outdoor Recreation District (OR)
			Tourist Resort District (TR)
			Recreational Vehicle Park District (RV-1)
			Recreational Vehicle Park District (RV-2)
			Professional Business District (B-1)
			Neighborhood Business District (B-2)
			General Business District (B-3)
			Major Commercial District (B-4)
			Limited Business District (LB)
			Light Industrial District (M-1)
			General Industrial District (M-2)

Print Date: April 5, 2024

0 0.13 0.25 0.5 0.75 1 Miles

The information contained in this representation of digital data distributed by the Baldwin County Commission's Planning and Zoning Department is derived from a variety of public and private sources and is considered to be dependable. However, the accuracy, completeness, and currency thereof are not guaranteed. The Baldwin County Commission makes no warranties, expressed or implied, as to the accuracy, completeness, currency, reliability, or suitability of information or data contained in or generated from the County Geographic Database for any particular purpose. Additionally, the Baldwin County Commission or any agent, servant, or employee thereof assumes no liability associated with the use of this data, and assume no responsibility to maintain it in any matter or form. For more information concerning this map call 251.580.1655.