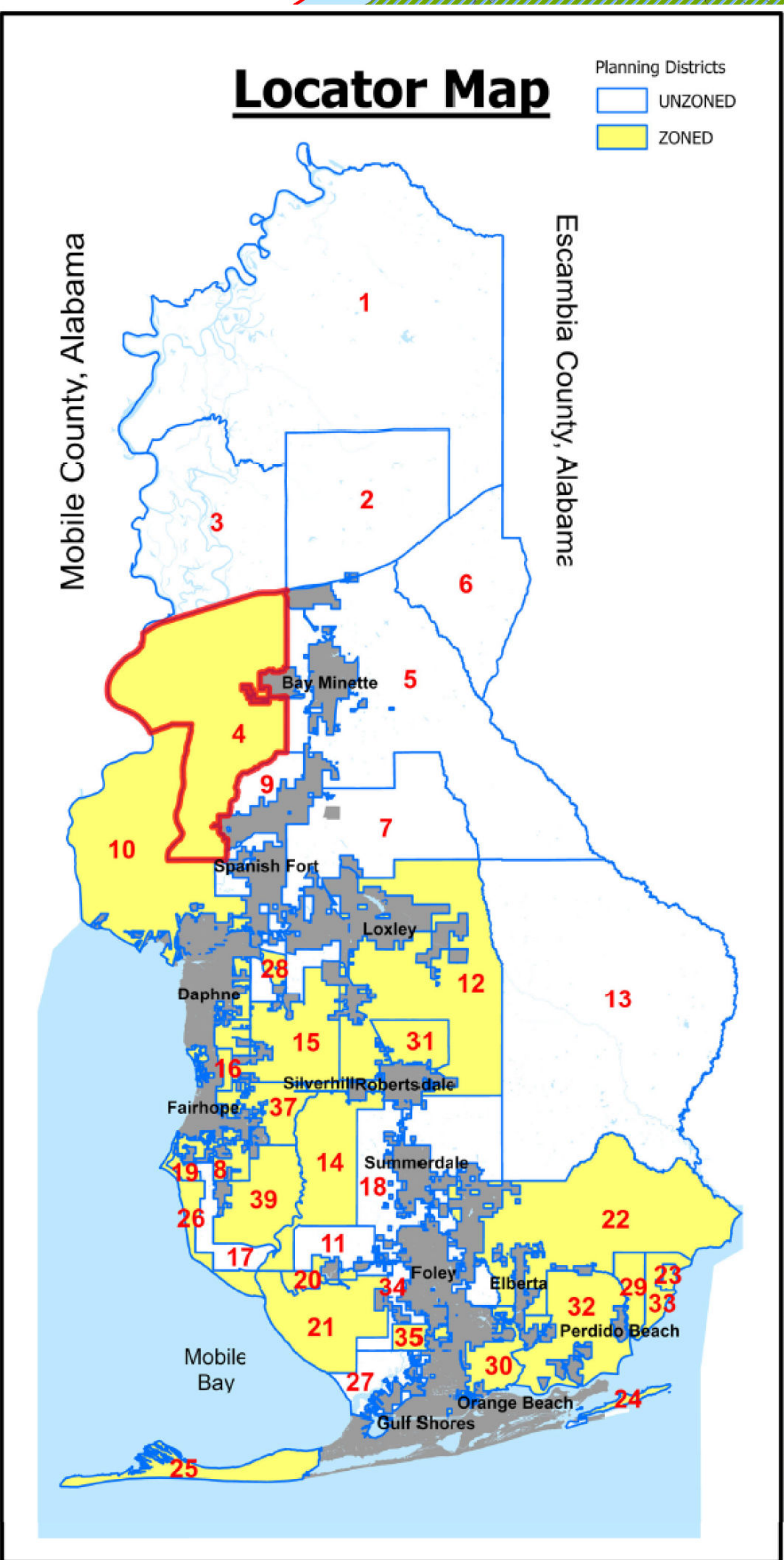
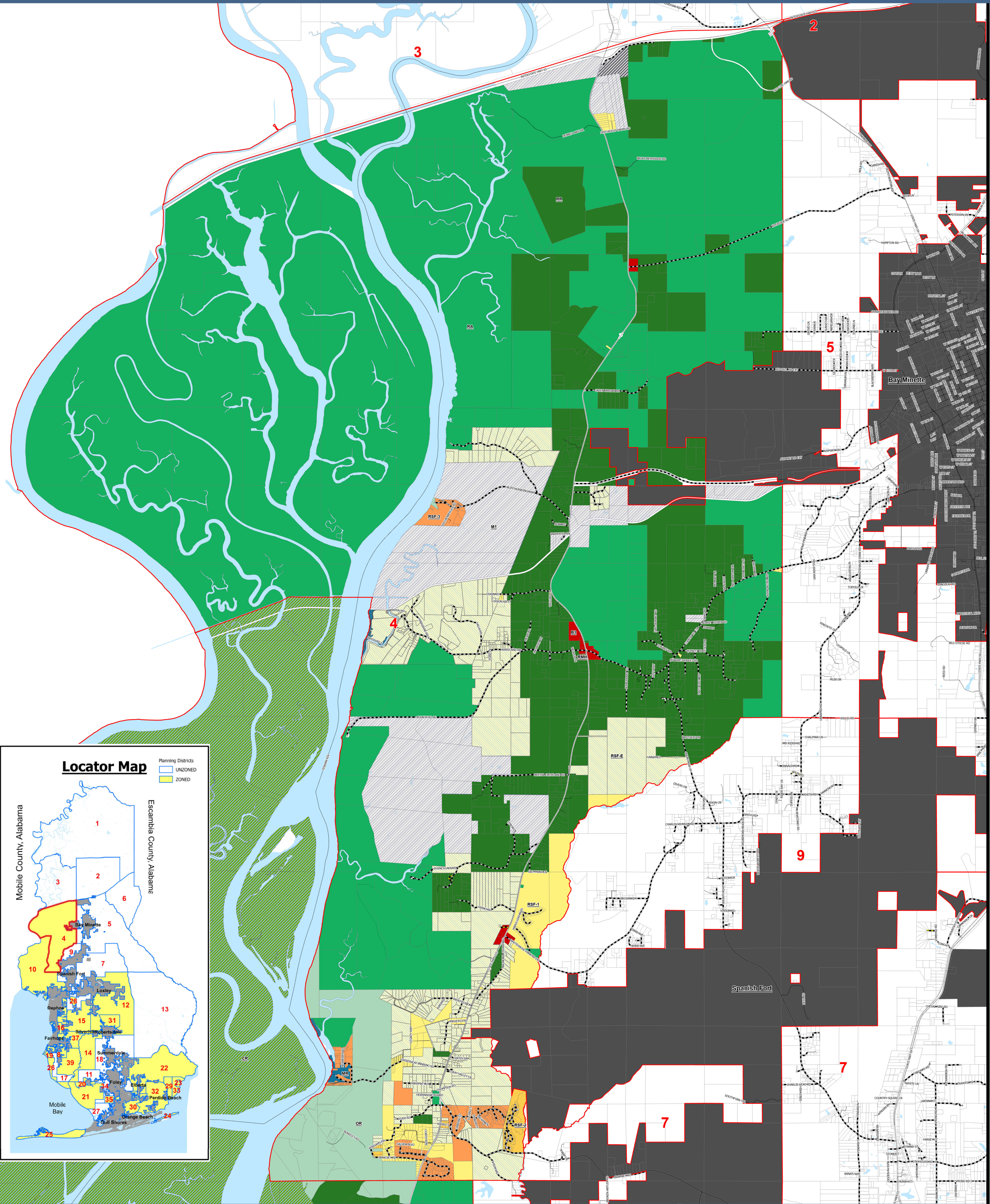


PLANNING DISTRICT 4



On July 13, 1993 a majority of qualified electors in Planning District 4 voted to institute County Zoning. On February 21, 1995, the County Commission adopted the Planning District 4 Zoning Map and Ordinances.



BALDWIN COUNTY, ALABAMA
 Planning and Zoning Department

Legend

- Planning Districts
- Water
- City Limits
- Tax Parcels
- 911 Streets
- County Maintained Roads
 - Paved
 - Unpaved

Zoning

- Rural District (RR)
- Rural Agricultural District (RA)
- Conservation Resource District (CR)
- Residential Single Family Estate District (RSF-E)
- Residential Single Family District (RSF-1)
- Residential Single Family District (RSF-2)
- Residential Single Family District (RSF-3)
- Residential Single Family District (RSF-4)
- Residential Two Family District (RTF-4)

- Residential Single Family District (RSF-6)
- Residential Two Family District (RTF-6)
- Residential Multiple Family District (RMF-6)
- High Density Residential District (HDR)
- Residential Manufactured Housing Park District (RMH)
- Base Community Zoning District (BCZ)
- Marine Recreation District (MR)
- Outdoor Recreation District (OR)
- Tourist Resort District (TR)
- Recreational Vehicle Park District (RV-1)
- Recreational Vehicle Park District (RV-2)
- Professional Business District (B-1)
- Neighborhood Business District (B-2)
- General Business District (B-3)
- Major Commercial District (B-4)
- Limited Business District (LB)
- Light Industrial District (M-1)
- General Industrial District (M-2)

Print Date: April 5, 2024



The information contained in this representation of digital data distributed by the Baldwin County Commission's Planning and Zoning Department is derived from a variety of public and private sources and is considered to be dependable. However, the accuracy, completeness, and currency thereof are not guaranteed. The Baldwin County Commission makes no warranties, expressed or implied, as to the accuracy, completeness, currency, reliability, or suitability of information or data contained in or generated from the County Geographic Database for any particular purpose. Additionally, the Baldwin County Commission or any agent, servant, or employee thereof assumes no liability associated with the use of this data, and assume no responsibility to maintain it in any manner or form. For more information concerning this map call 251.580.1655.