

# STAY ALERT

BALDWIN COUNTY

## INSIDE

SHELTER INFORMATION  
EVACUATION ROUTES  
BEACH SAFETY  
VOLUNTEERING  
EMPOWERING RESILIENCE

2024 ALABAMA GULF COAST  
EMERGENCY PREPAREDNESS GUIDE



A publication of **GULF COAST MEDIA**

The Northern Gulf Coast's Most Experienced  
Hurricane, Decorative & Security Shutter Experts!



Custom Solutions for Home, Condo or Business

# Easy Shutter Services, LLC

2804 E. 2nd St., Gulf Shores, AL 36542

(one block East of Lulu's)

Call Today For Free Estimate!

**(251) 968-0008**

shutterservicesllc@gmail.com • [easys shutter services.com](http://easys shutter services.com)



# BE PREPARED

Battery backup weather radios provide safety for your family with advance weather hazard warnings



NO POWER? NO WORRIES!  
COOK A HOT & HEALTHY MEAL  
ON YOUR WEBER GRILL

## GENERAC GENERATORS



**Eastern  
Shore**

**ACE  
Hardware**

YOUR SOURCE FOR EMERGENCY SUPPLIES:

- Portable Generators
- Tarps • Batteries • Propane
- Sandbags • Chainsaws
- Flashlights • and more...

Corner of Hwy 31 & Hwy 90 in Spanish Fort **251-626-3350**  
10058 Belgrove Ave. in Daphne **251-241-0850**

# BALDWIN COUNTY EMA

*Statement from Director, Tom Tyler*

Bad things will happen, and our job is to make them less bad and get ourselves back to normal faster. This is a simple way of expressing the mission of the Baldwin County Emergency Management Agency. Our role is to plan, prepare for, mitigate, respond to, and recover from disasters, whether they are natural or manmade. When considering each thing that we do, we always ask ourselves “How will this task make disasters less impactful and help Baldwin County recover faster?”

Preparation requires effort from all of us: Individuals and families; organizations; private businesses; and local, state, Tribal, and Federal Government. The main purpose of this publication is to inform our readers about disaster preparation and the variety of players that interact to create and maintain a culture of preparedness. While the timing of this publication corresponds with the Atlantic hurricane season, we are very aware that Baldwin County faces hazards not associated with tropical weather. Our job is to prepare for all hazards that we may face.

Preparedness begins with the individual and family unit. Individuals who are adequately prepared are less likely to find themselves in danger, which allows our emergency services to operate more efficiently during a disaster. Those who evacuate when instructed to do so by proper authorities reduce the number of calls for rescue during a very challenging time. Families with an emergency kit and an emergency plan should be more capable of withstanding extended periods of time in which response efforts are restricted by disaster conditions. Organizations and businesses that prepare are generally able to resume operations faster following an event. The more individuals, families, and organizations prepare, the more effective the response will be. It's that simple.

I cannot over stress the vital importance of our partnerships. By design, the emergency management effort is a network of organizations and individuals working together to greatly expand our capabilities. During a disaster, the Emergency Operations Center will expand to prioritize efforts and manage resources, which requires coordination of multiple groups and locations. Our partners are crucial to our efforts to be successful for the residents and visitors of Baldwin County during a time of need.

Volunteers make up a special part of the coordinated response effort. Baldwin County EMA coordinates volunteer efforts through the Baldwin County VOAD, which stands for Voluntary Organizations Active in Disaster. VOAD provides a single entity with which we communicate unmet needs in our area, and VOAD coordinates with its member groups to meet those needs. This helps to maximize volunteer

efficiency by minimizing oversaturation of assistance in one location while another area is suffering with no help on the way. In Baldwin County, we have many civic groups, faith-based organizations, and other associations that are standing ready to assist in their own way during times of need: We ask that they join with Baldwin County VOAD, stay connected, and be ready! Many commonly think of volunteers only in terms of work boots and heavy lifting, but help is also needed in other ways, from serving meals, answering phones, and performing light clerical work. VOAD meets on a quarterly basis, and membership costs only \$10 per year. Refer to the VOAD page later in this publication for more information.

Although tropical weather is our most prolific natural hazard, other weather events also have the potential to impact Baldwin County. Our partners at the National Weather Service in Mobile provide invaluable information that informs our decisions and recommendations to partner agencies, and our local radio and television meteorologists do an outstanding job of informing the public. We urge our residents and visitors to obtain their weather information from local sources: National television and internet weather sources provide a big-picture perspective and can be entertaining, but nothing can replace the expertise from forecasters who live and work in our area and have a vested interest in keeping our residents and guests safe. Stay weather aware by signing up for local alerts by visiting [Alert-Baldwin.com](http://Alert-Baldwin.com). We strongly encourage having multiple ways of receiving alerts and warnings, and a NOAA weather radio is a must for every household.

Elsewhere in this publication you will find a section dedicated to the BEach SAFE campaign. Here you will find valuable information on staying safe while swimming in the Gulf of Mexico, as well as an appeal to our residents and especially to our tourism industry to help us spread the BEach SAFE word: Visitors are distressingly overrepresented among rip current fatalities along the northern Gulf Coast, and a major effort of this campaign seeks to inform visitors before their feet hit the sand. We need everyone's assistance to ensure that our guests return home with only wonderful memories of Baldwin County with plans of coming back the following year.

By reading this message, you're already showing your interest in staying alert and preparing for disasters. Please take the time to become familiar with the articles that follow, and share with your family, friends, and visitors. It takes all of us to create a Culture of Preparedness!

# TABLE OF CONTENTS

It's All Here.....7

Empowering Resilience.....9

Baldwin County 911.....13

Beach Safe.....14

National Weather Service.....16

Storm Technology.....17

Shelters of Last Resort.....18

Evacuation Information.....19

Flood Information.....20

Stay Informed..... 23

Pet Preparedness..... 24

Senior Considerations.....25

Returning Home ..... 26

Business Tips..... 27

Volunteer Organizations..... 28

Tornado Shelters.....30

Contact Information.....34

## GULF COAST MEDIA

### PUBLISHER

Vince Johnson  
vince@gulfcoastmedia.com

### EXECUTIVE EDITOR

Kayla Green  
kayla@gulfcoastmedia.com

### EDITORIAL ASSISTANT

Whisper Edwards  
whisper@gulfcoastmedia.com

### COPY EDITING

Kayla Green

### DESIGN AND LAYOUT

McKinzie Daniels  
graphics@gulfcoastmedia.com

### ADVERTISING

Frank Kustura  
frank@gulfcoastmedia.com  
251.923.8129

Bethany Summerlin

bethany@gulfcoastmedia.com  
251.266.9982

Shawna Stefankiewicz

shawna@gulfcoastmedia.com  
660.676.2083

Stay Alert Baldwin magazine is published by Gulf Coast Media, in partnership with Baldwin County Emergency Management Agency.

All rights reserved. Reproduction without permission is prohibited. Gulf Coast Media accepts no responsibility in the guarantee of goods and services advertised herein.



Find the e-edition by visiting [issuu.com](http://issuu.com) and searching for Stay Alert Baldwin or Gulf Coast Media.

You can also access our e-editions through [GulfCoastMedia.com/Magazines](http://GulfCoastMedia.com/Magazines).

## STAY INFORMED, DOWNLOAD THE APPS TODAY



We want to remind you that we are no longer using the Baldwin EMA App. You can now stay plugged in with Baldwin County EMA by using the Baldwin County Commission App!

To receive local, emergency alerts and other important community news, sign up for [AlertBaldwin.com](http://AlertBaldwin.com). This free system enables us to rapidly provide residents and visitors with critical information in local situations such as severe weather, hazardous materials releases, unexpected road hazards and closures, missing persons, evacuations and more. Stay prepared, informed, and connected.



TO SIGN UP FOR LOCAL ALERTS



TO STAY CONNECTED WITH BALDWIN COUNTY COMMISSION

JOIN ALERT BALDWIN TODAY  
[www.AlertBaldwin.com](http://www.AlertBaldwin.com)

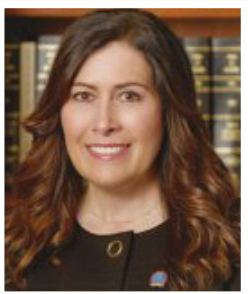




"I have lived in Baldwin County my whole life. I was born and raised here. I can remember going through Hurricane Frederic as a child and how there was not an opportunity to get prepared in a timely manner. This was a very scary time for us. I have been through every storm system or weather event since then, and preparedness has come a long way since the days of plotting on paper. Our current EMA and all the staff

are on the cutting edge of preparedness. I am highly confident that the citizens of this county, as well as the visitors, will be given the proper notices needed when having to deal with any severe weather event."

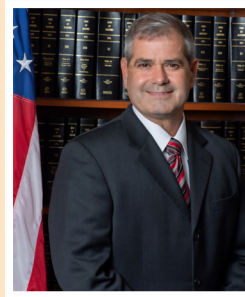
**James E. "Jeb" Ball**  
**Baldwin County Commissioner District 1**



"The growth and development of Baldwin County is incredible; however, as a commissioner, resident and business owner we all must remember contingency planning and the need to prepare before we are faced with tropical weather. As I am born and raised in Baldwin County, I have maintained a clear understanding of what Baldwin County offers. From Little River to the Gulf Coast, you will find

the most beautiful landscape. We must be ready to prepare for, respond to, recover from and mitigate against storm surge, flooding and other hazards associated with tropical weather events."

**Billie Jo Underwood**  
**Baldwin County Commissioner District 3**



"As a retired Alabama State Trooper, I have had the opportunity to work on many disasters that have hit the Alabama Gulf Coast during my tenure. I was assigned to the Alabama State Emergency Management Agency as the liaison between state agencies and the local agencies and saw first hand the devastations caused by Hurricane Katrina and Hurricane Sally caused to our Baldwin County citizens. As a new Commissioner, I

feel it is paramount that all residents, visitors, organizations, and businesses have a plan and stay informed. It is very important to prepare and have an evacuation plan for you, your family, and your pets. We as a commission are confident that our Emergency Management Agency is prepared for any emergency that comes our way."

**Matthew P. McKenzie**  
**Baldwin County Commissioner District 2**



"With more than 34 years experience working with the Baldwin County Highway Department and more than 18 years serving as your county commissioner, I have witnessed many disasters that have impacted our home. It is imperative that we plan as an individual, as a family, as a community and as a county. With the rapid influx of new residents, we want to help provide information for residents to plan appropriately for

natural and man-made disasters. It is equally important that we do not become complacent in our preparedness efforts. Disasters are unpredictable, and we must maintain our state of readiness."

**Charles ("Skip") F. Gruber**  
**Baldwin County Commissioner District 4**

# IT'S ALL HERE

Whether you love the diversity of recreational activities, the incredibly beautiful scenery or the good ol' Southern charm of South Alabama, Baldwin County has it all. Coastal Alabama is a beautiful place to live, work and play. That is evident not only by the millions of visitors to Baldwin County but also with the thousands of people relocating to our area each year. The face of Baldwin County is changing rapidly.

Baldwin County is one of the fastest growing counties in the State of Alabama. We are living in a dynamic and evolving community where we strive to maintain a safe place to reside, work and vacation. Public safety, resilience and support for our community are top priorities for Baldwin County Emergency Management Agency (EMA). It is this mindset of planning, preparedness and mitigation that Baldwin County EMA, a department within the Baldwin County Commission, has provided this publication.

Our top priority is the safety of our residents and visitors alike. We also understand that education regarding disaster preparedness is critical so that residents can make informed and wise decisions

when it comes to personal safety and property protection. Throughout this publication, we hope you find helpful information and resources that will assist you in emergency preparedness so that you are equipped to respond and that you are knowledgeable of the resources available to you.

Together, we can develop mitigation measures to protect our unique community from hazards that threaten our region. Our economy is heavily dependent on tourism. Public sector, private sector, volunteer organizations and our residents must all work together to ensure that we are prepared, resilient and ready for disasters that may impact our region.

This publication is designed to help inform you, connect you with resources and help you plan and prepare your family, your business and your community for disasters.

Let's prepare together!



**PREPARED.  
INFORMED.  
CONNECTED.  
ALERT BALDWIN.**

## **BALDWIN COUNTY** EMERGENCY MANAGEMENT AGENCY

Receive alerts about emergencies and other important community news by signing up for AlertBaldwin. This free system enables us to rapidly provide residents and visitors with critical information in local situations such as severe weather, hazardous materials releases, unexpected road hazards and closures, missing persons and evacuations. Be prepared, be informed, and stay connected.

**JOIN ALERT BALDWIN TODAY**  
[www.alertbaldwin.com](http://www.alertbaldwin.com)



23100 McAuliffe Dr. Robertsdale, AI 36567  
[www.baldwincountyal.gov/ema](http://www.baldwincountyal.gov/ema)

**ALERT**   
**BALDWIN**  
BALDWIN COUNTY EMERGENCY NOTIFICATIONS



# EMPOWERING RESILIENCE

## BEING PROACTIVE WITH DISASTER PREPAREDNESS

By: Jessica Waters (Public Information Officer, Baldwin County EMA)

In our fast-paced lives, the belief that disasters will never personally impact us often serves as the primary excuse for neglecting essential preparedness measures. However, the reality is that disasters can strike unexpectedly, causing fear and anxiety. Proactive preparation not only alleviates these concerns but also significantly reduces the overall impact of disasters on individuals, families, and communities.

By taking preventive measures, individuals can potentially avoid some dangers altogether. Disasters, ranging from fires and tornadoes to hurricanes, disrupt lives daily and can have lasting effects that take years to recover or rebuild. Recognizing the local nature of disasters, it is imperative

for individuals to take personal responsibility for preparedness.

While disaster relief organizations may offer temporary assistance, the ultimate responsibility lies with each individual and household. Understanding the hazards specific to your area is key. In Baldwin County, hazards such as hurricanes, severe weather, tornadoes, flooding, extreme heat, earthquakes, and terrorism are acknowledged and planned for by the Baldwin County Emergency Management Agency.

To be a prepared resident, it is crucial to assemble essential items that enable self-sufficiency for a minimum of five days. These provisions should include food, water, medications, a weather ra-

dio, and more. You will see a more extensive list of suggested items in this publication. Establishing and maintaining an Emergency Kit is vital for navigating through disasters effectively.

This publication aims to inspire a more proactive mindset towards disaster preparedness, emphasizing the importance of personal responsibility and self-sufficiency in the face of unexpected events. We are hoping to educate the residents and visitors of Baldwin County with local hazards and steps to mitigate their impacts, so that individuals can empower themselves and their communities to withstand and recover from disasters more effectively.



**STATE INFORMATION**

To download the latest updated version of this sheet: [www.ncei.noaa.gov/resources/newis](http://www.ncei.noaa.gov/resources/newis)

Alabama Emergency Management Agency ( <a href="https://ema.alabama.gov">https://ema.alabama.gov</a> ).....	1-800-843-0699 or 205-280-2200
Ready Alabama.....	<a href="http://www.readyalabama.gov">www.readyalabama.gov</a>
Alabama Department of Transportation ( <a href="http://www.dot.state.al.us">www.dot.state.al.us</a> ).....	334-353-6554
ALDOT Emergency Call Center (Info on Alabama travel conditions during an emergency event) .....	1-888-588-2848
.....	<a href="https://miscwapps.dot.state.al.us/ECC/">https://miscwapps.dot.state.al.us/ECC/</a>
Official State Website.....	<a href="http://www.alabama.gov">www.alabama.gov</a>
Alabama Highway Patrol ( <a href="http://www.alea.gov/dps/highway-patrol">www.alea.gov/dps/highway-patrol</a> ).....	334-676-6003 (*HP from any cell phone)
Alabama Official Travel Site ( <a href="https://alabama.travel">https://alabama.travel</a> ).....	1-800-252-2262
Alabama Law Enforcement Agency .....	<a href="https://www.alea.gov">https://www.alea.gov</a>
Governor’s Office ( <a href="https://governor.alabama.gov">https://governor.alabama.gov</a> ).....	334-242-7100
Alabama Attorney General ( <a href="http://www.alabamaag.gov">www.alabamaag.gov</a> ).....	334-242-7300
Alabama Department of Insurance ( <a href="http://www.aldoi.gov">www.aldoi.gov</a> ).....	334-269-3550
Alabama Department of Conservation and Natural Resources ( <a href="http://www.outdooralabama.com">www.outdooralabama.com</a> ).....	334-242-3465
Alabama Department of Environmental Management ( <a href="http://www.adem.state.al.us/default.cnt">www.adem.state.al.us/default.cnt</a> ).....	334-271-7700
National Weather Service Forecast Office (Mobile/Pensacola) ( <a href="http://www.weather.gov/mob">www.weather.gov/mob</a> ).....	251-633-6443
National Weather Service Forecast Office (Tallahassee, FL) ( <a href="http://www.weather.gov/tae">www.weather.gov/tae</a> ) .....	850-942-8851
National Weather Service Southern Region .....	<a href="http://www.weather.gov/srh">www.weather.gov/srh</a>
StormSmart Coasts.....	<a href="http://gom.stormsmart.org">http://gom.stormsmart.org</a>
US Coast Guard, 8th District.....	<a href="http://www.atlanticarea.uscg.mil/Our-Organization/District-8/">www.atlanticarea.uscg.mil/Our-Organization/District-8/</a>
Alabama Power ( <a href="http://www.alabamapower.com">www.alabamapower.com</a> ).....	Outage: 1-800-888-2726
Dothan Utilities ( <a href="http://www.dothan.org/153/Dothan-Utilities">www.dothan.org/153/Dothan-Utilities</a> ) .....	334-615-3302
Baldwin EMC ( <a href="http://www.baldwinemc.com">www.baldwinemc.com</a> ).....	Outage: 1-800-837-3374 or 251-989-6247
Covington Electric Cooperative ( <a href="https://covington.coop">https://covington.coop</a> ).....	Outage: 1-800-239-1193
Southern Pine Electric ( <a href="http://www.southernpine.coop">www.southernpine.coop</a> ) .....	1-800-231-5240
Wiregrass Electric ( <a href="http://www.wiregrass.coop">www.wiregrass.coop</a> ).....	Outage: 1-888-469-6882

**FOR EMERGENCIES CALL 911 • FOR NON-EMERGENCIES CALL 211**

**COUNTY INFORMATION**

**BALDWIN**

Emergency Management  
 .....South Baldwin 251-972-6807  
 .....North Baldwin 251-937-0317  
 .....Eastern Shore 251-990-4605  
 ..... <https://baldwincountyal.gov/departments/EMA>  
 Sheriff ..... 251-937-0202  
 ..... <https://sheriff.baldwincountyal.gov/home>

**COVINGTON**

Emergency Management ..... 334-428-2670  
 ..... [www.covcounty.com/emergency-management-agency](http://www.covcounty.com/emergency-management-agency)  
 Sheriff ..... 334-428-2610  
 ..... [www.covcounty.com/sheriff](http://www.covcounty.com/sheriff)

**ESCAMBIA**

Emergency Management .....251-867-0232  
 ..... [www.co.escambia.al.us/emergency.html](http://www.co.escambia.al.us/emergency.html)  
 Sheriff ..... 251-809-0741  
 ..... [www.escambiacysherriffal.org](http://www.escambiacysherriffal.org)

**GENEVA**

Emergency Management ..... 334-684-5600  
 ..... [www.genevacountyal.gov/ema/](http://www.genevacountyal.gov/ema/)  
 Sheriff ..... 334-684-6947  
 ..... [www.genevacountyalsheriff.org](http://www.genevacountyalsheriff.org)

**HOUSTON**

Emergency Management ..... 334-794-9720  
 ..... [www.dothanhoustoncountyma.org](http://www.dothanhoustoncountyma.org)  
 Sheriff .....334-677-4882  
 ..... [www.houstoncountysheriff.org](http://www.houstoncountysheriff.org)

**MOBILE**

Emergency Management ..... 251-460-8000  
 ..... [www.mcema.net](http://www.mcema.net)  
 Sheriff ..... 251-574-2423  
 ..... [www.mobileso.com](http://www.mobileso.com)

**A  
 A  
 M  
 A  
 B  
 A  
 A  
 L  
 L  
 A  
 B  
 A  
 M  
 B  
 A**

## NATIONAL INFORMATION

American Red Cross..... 1-800-RED-CROSS (1-800-733-2767)  
..... [www.redcross.org](http://www.redcross.org)  
Centers for Disease Control..... [www.cdc.gov](http://www.cdc.gov)  
Environmental Protection Agency ..... [www.epa.gov](http://www.epa.gov)  
Federal Emergency Management Agency (FEMA)..... 1-800-621-FEMA (3362)  
..... [www.fema.gov](http://www.fema.gov)  
Agencia Federal para el Manejo de Emergencias (FEMA) ..... [www.fema.gov/es](http://www.fema.gov/es)  
National Oceanic and Atmospheric Administration (NOAA) ..... [www.noaa.gov](http://www.noaa.gov)  
National Weather Service ..... [www.weather.gov](http://www.weather.gov)  
Gulf of Mexico Disaster Response Center <https://oceanservice.noaa.gov/hazards/drc>  
National Data Buoy Center ..... [www.ndbc.noaa.gov](http://www.ndbc.noaa.gov)  
National Hurricane Center ..... [www.nhc.noaa.gov](http://www.nhc.noaa.gov)  
National Centers for Environmental Information (NCEI).. [www.ncei.noaa.gov](http://www.ncei.noaa.gov)  
National Environmental Satellite, Data, and Information Service (NESDIS)  
..... [www.nesdis.noaa.gov](http://www.nesdis.noaa.gov)  
US Department of Homeland Security ..... [www.dhs.gov](http://www.dhs.gov)



### DOWNLOAD THE FREE NEWS APP

Compatible with iPhone, iPod Touch, and iPad! Search 'NEWS' in the App Store to download on your Apple device.

The National Hurricane Center normally issues public advisories on their website and to the media for Atlantic tropical cyclones every six hours at 4:00 AM CDT, 10:00 AM CDT, 4:00 PM CDT, and 10:00 PM CDT. Intermediate public advisories are issued every 3 hours when coastal watches or warnings are in effect. Additionally, special public advisories may be issued at any time due to significant changes in warnings or in the cyclone.

## NATIONAL HURRICANE CENTER MOBILE DATA

Graphical Tropical Weather Outlook RSS/XML feed  
..... [www.nhc.noaa.gov/gtwo.xml](http://www.nhc.noaa.gov/gtwo.xml)  
Website for Tablets and Smartphones..... [www.nhc.noaa.gov/mobile](http://www.nhc.noaa.gov/mobile)

## RADIO STATIONS

WOOF 99.7 FM (DOTHAN)	WABD 97.5 FM (MOBILE)
WRWA 88.7 FM (DOTHAN)	WHIL91.3 FM (MOBILE)
WKMX 106.7 FM (ENTERPRISE)	WMFC 99.3 FM (MONROEVILLE)
WZEW 92.1 FM (FAIRHOPE)	WDLT 104.1 FM (SARALAND)

## NOAA WEATHER RADIO Not manufactured by NOAA, NWR receivers can be purchased at many retail outlets and on the Internet

NOAA Weather Radio (NWR) All Hazards is a nationwide network of radio stations broadcasting continuous weather information directly from a nearby National Weather Service office. NWR broadcasts National Weather Service warnings, watches, forecasts, and other hazard information 24 hours a day.

162.400	162.425	162.450	162.475	162.500	162.525	162.550
MHz	MHz	MHz	MHz	MHz	MHz	MHz

## ALABAMA CONTRAFLOW FOR HURRICANE EVACUATION

To provide additional roadway capacity during hurricane evacuations from the Gulf Coast, a portion of I-65 may operate entirely in the northbound direction, meaning both southbound lanes of I-65 would be converted into northbound lanes. These lanes are called contraflow lanes. An I-65 lane reversal is not automatic in every hurricane.

### I-65 NORTHBOUND

Contraflow begins in Baldwin County just south of Exit 31 (State Road 225). A paved crossover at that location allows motorists traveling in the normal Northbound lanes to transition (crossover) to the contraflow lanes.

Contraflow ends in Montgomery just north of Exit 167 (U.S. 80). Motorists in the contraflow lanes will crossover into the two left lanes of the normal northbound lanes. Motorists traveling in the normal northbound lanes will merge into the two right lanes and continue north and onward to their destinations.

### I-65 SOUTHBOUND

During contraflow, southbound traffic traveling on I-65 through Montgomery will be directed to exit the interstate at Exit 167 at U.S. 80 and then onto U.S. 31 South. From Montgomery southward, all southbound I-65 traffic is detoured to U.S. 31. Eastbound traffic on U.S. 80 cannot enter I-65 at Exit 167 and will be directed to U.S. 31. **Southbound traffic cannot use I-65 between Montgomery and Mobile during contraflow.**

Tune into the Highway Advisory Radio System (HARS) for updated information. Look for advisory signs in these areas. Mobile area – 1630 AM • Montgomery area – 1690 AM

*For additional information go to:*

[www.dot.state.al.us](http://www.dot.state.al.us)

## PREPARED BY

NOAA National Centers for  
Environmental Information

1-866-732-2382 or email:  
[NCEI.Info@noaa.gov](mailto:NCEI.Info@noaa.gov)

To download the latest pdf version of this sheet  
go to:

[www.ncei.noaa.gov/resources/newis](http://www.ncei.noaa.gov/resources/newis)

///post.flatters.spilled

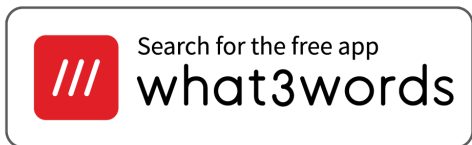
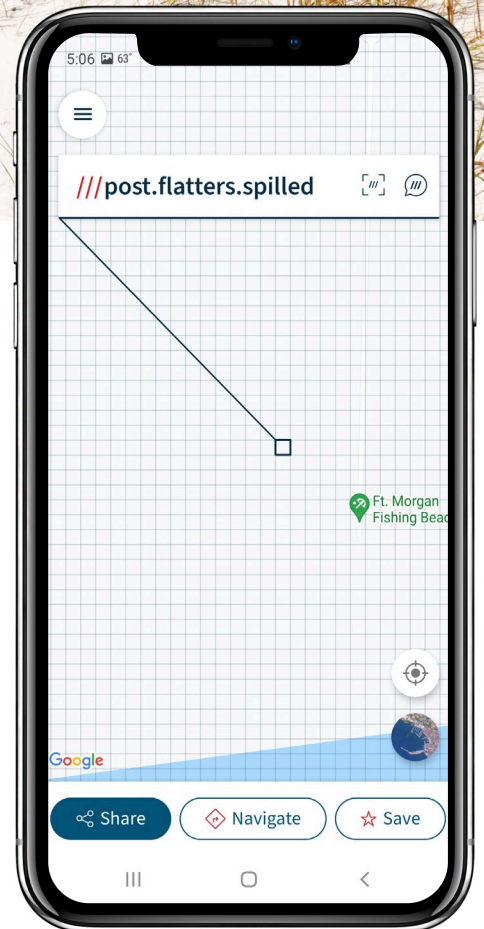


# Tell 9-1-1 exactly where help is needed with what3words

what3words is an easy way to give an exact location. Every 10ft square in the world has been given a unique combination of three words.

To give a what3words address in an emergency:

1. Open the what3words app.
2. Wait for the blue GPS dot to stabilize, then tap the current location icon (↗ iOS icon, 📍 Android icon).
3. Read the three words to the 911 call operator.



# BALDWIN COUNTY 9-1-1:

## HELPING PEOPLE IN TROUBLE

Did you know that the first 9-1-1 call was made in Haleyville, Alabama on February 16, 1968? The call was made by Alabama State Representative Rankin Fite. He dialed the emergency number, 9-1-1, from the mayor's office in Haleyville, Alabama, marking the beginning of the nationwide implementation of the emergency telephone number. Baldwin County Emergency Communication District (Baldwin County 9-1-1) was established in 1988 and handles approximately 120,000 9-1-1 calls a year. Baldwin County 9-1-1 dispatches for all 37 fire departments, Emergency Medical Service, and the Summerdale, Elberta, Silverhill Police Departments.

A long time ago, people had to remember different phone numbers to call for help. But then, an idea of using just three numbers: 9-1-1 was established. That way, everyone could easily remember it when they needed help fast.

Nowadays, 9-1-1 is evolving as part of the NextGeneration 9-1-1 because you can text us, too! If you can't talk on the phone, like if it's not safe or if you can't hear well, you can send a message to 9-1-1. We'll still know you need help and send someone to help you.

And guess what? You can even send videos to 9-1-1! If you see something dangerous or if someone is hurt, you can use your phone to show us what's happening. This helps our first

responders so they can provide help faster.

But remember, if you call 9-1-1 by accident, it's important to stay on the line and tell us it was a mistake. That way, they can make sure everyone who really needs help gets it quickly.

So, whether you need the police, firefighters, or medical services, 9-1-1 is there to help you in Baldwin County. It's like having superheroes on speed dial, ready to save the day whenever you need them!

## DURING A POWER OUTAGE, THE BRIGGS AND STRATTON GENERATOR PROVIDES POWER FOR YOUR HOME OR BUSINESS



Medium to Large Home

### New Managed Whole House Solution

Our new 20KW and 26KW Standby Generator is our smartest generator ever. It features ground-breaking power management technology, advanced safeguarding features that meet rigorous industry fire protection standards and a new airflow design allowing flexible placement options. There has never been a better time to protect your family and biggest investment.

### Take Advantage of SPECIAL SALE PRICES

\*20KW Model #040662

**NOW \$5,299.00**

With aluminum enclosure and Stainless Steel Base, 6 Year Warranty

\*20KW Model #040657

**NOW \$6,016.00**

With aluminum enclosure and Stainless Steel Base, 10 Year Warranty

\*26KW Model #040664

**NOW \$6,881.00**

With aluminum enclosure and Stainless Steel Base, 10 Year Warranty

\*Prices may change without notice! Limited to products in stock!

- Why buy a Briggs and Stratton Generator System?
- Patented Symphony II, Power Management technology allows you to power more for less.
- Smarter smaller and more fuel efficient.
- Briggs and Stratton a leader in energy innovation.
- Durable all weather finish.
- Electronic friendly.
- Remote monitoring system.
- Call today for a FREE on site estimate!

Come on over to **ELBERTA HARDWARE!**

**"We service and finance what we sell."**

**25320 U.S. Hwy. 98, Elberta, AL 36530 • 251-986-5233**

**THANK YOU FOR VOTING US BEST SMALL ENGINE REPAIR**



# BEACH SAFE

## FIRST YEAR SEES DRAMATIC RESULTS, BUT THE MISSION IS LONG-TERM

Early in 2022, multiple city and county agencies across Baldwin County, along with Gulf Shores & Orange Beach Tourism, worked together to expand beach safety education for Baldwin County residents and visitors to ensure their day at the beach is a safe one.

With Baldwin County being one of the fastest-growing counties in Alabama and seeing close to 8 million visitors a year, many newcomers are not familiar with the waters of the Gulf of Mexico. BEach SAFE aims to increase awareness among locals and guests on topics including beach conditions, warning flag systems, rip current awareness, safe swimming practices, and more. Recognizing that not all beach areas on Alabama's Gulf Coast have lifeguards, beach flags and patrols, BEach SAFE is designed to help individuals stay informed and understand potential dangers. Core message points for the campaign include:

### CHECK WEATHER AND SURF CONDITIONS DAILY

- By phone:
- Gulf Shores: 251-968-SURF
- Orange Beach: 251-981-SURF
- Online: VisitALBeaches.com/safety

### KNOW YOUR LIMITATIONS

- Learn to swim; non-swimmers should stay out of the water
- Don't overestimate your swimming ability
- Don't rely on inner tubes, floats or other inflatable toys
- Use Coast Guard approved lifejackets
- Designate a water-watcher

and supervise children closely

- Never swim alone

### SWIM NEAR A LIFEGUARD

- Lifeguards are stationed seasonally at all public beaches in Gulf Shores and Orange Beach (March through September)
- Currently, no lifeguard protection is available in the Fort Morgan area

### SIGN UP FOR DAILY BEACH CONDITIONS TEXT ALERTS

- Text "ALBEACHES" to "888777"
- Text "STOP" to opt out of notifications upon your departure

### KNOW AND HEED THE BEACH WARNING FLAGS

- Yellow: Moderate surf and/or currents
- Purple: Dangerous marine life
- Red: High surf and/or strong currents
- Double Red: Water closed to the public

### LEARN HOW TO ESCAPE A RIP CURRENT

Rip currents are powerful currents of water moving away from shore. They can sweep even the strongest swimmer away from shore.

- If caught in a rip current, remain calm
- Escape the current by swimming parallel to the shoreline
- When free of the current, swim at an angle—away from the current—toward shore
- Float or tread water if unable to escape by swimming

- If unable to reach shore, draw attention to yourself by facing the shore and calling or waving for help

### KNOW WHAT TO DO IF SOMEONE ELSE IS IN DANGER

- First, CALL 9-1-1
- Seek help from a lifeguard; if no lifeguard is present, yell instructions on how to escape the current
- Throw the victim something that floats
- Don't attempt to perform a rescue as you could also get caught in the current

In just the first year of Beach SAFE, water rescues were down 46.4%, drownings decreased by 66.6%, and 15,247 people signed up for daily beach conditions text message alerts. But leaders know the effort has to be long-term and consistent.

"We know from the Leave Only Footprints and Worth the Wait campaigns we have launched in recent years that it takes all aspects of our community – the cities, local businesses, and residents – sharing a consistent message with our guests to make an impact. BEach SAFE is a united message across the entire county, which means we need businesses and residents from the northern part of Baldwin County all the way down to the beaches to promote it every single day, regardless of if they operate in the tourism industry." Says Beth Gender, CEO of Gulf Shores & Orange Beach Tourism.

"Research has shown that people need to hear or read something at least seven times for it to stick in their memory. That means seeing BEach SAFE on a billboard, on

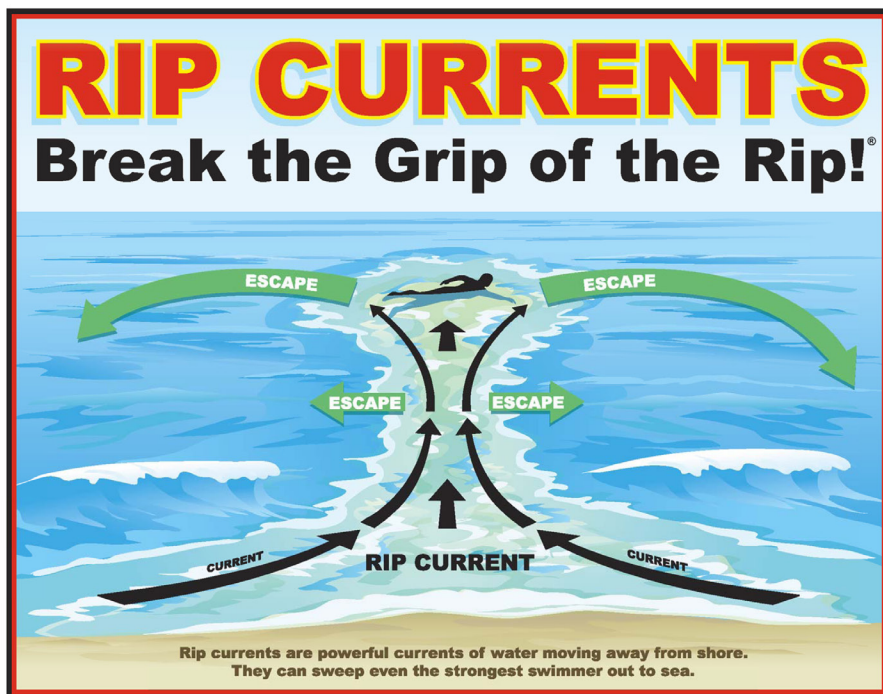
a sign in a place of business, a brochure on a rack or put in their shopping bag, a magnet on the back of the car in front of them,” stresses Gendler. “These BEach SAFE messages can’t be overshadowed or overcommunicated because they truly can help save lives.”

The two local fire chiefs responsible for initiating the BEach SAFE effort echo this message.

“We’ve got to look at all things that are a threat to all of us,” said Gulf Shores Fire Chief Mark Sealy. “Creating awareness about this program can save lives each and every day.”

“We’ve continued to work on our messaging related to beach safety,” said Former Orange Beach Fire Chief Mike Kimmerling. “But we are so blessed to have the support of all of these involved parties (across the county).”

BEach SAFE was developed by Gulf Shores and Orange Beach Tourism (GSOBT), Gulf Shores Fire Department, Orange Beach Fire Department, Fort Morgan Volunteer Fire Department, Baldwin County Emergency Management Agency, Baldwin County Commission and Baldwin County 9-1-1.



### IF CAUGHT IN A RIP CURRENT

- ◆ **Don't fight the current**
- ◆ **Swim out of the current, then to shore**
- ◆ **If you can't escape, float or tread water**
- ◆ **If you need help, call or wave for assistance**

### SAFETY

- ◆ **Know how to swim**
- ◆ **Never swim alone**
- ◆ **If in doubt, don't go out**

More information about rip currents can be found at the following web sites:

[www.ripcurrents.noaa.gov](http://www.ripcurrents.noaa.gov)  
[www.usla.org](http://www.usla.org)





TEXT ALBEACHES TO 888777




Visit [AlertBaldwin.com](http://AlertBaldwin.com)

# NATIONAL WEATHER SERVICE MOBILE/PENSACOLA

*By: Jessica Chace (Warning Coordination Meteorologist)*

Did you know that all of the weather watches and warnings for Baldwin County come from local meteorologists living in this community? That's right! The National Weather Service (NWS) in Mobile, AL, is responsible for the forecasts, watches, warnings, and advisories for 20 Mississippi, Alabama, and Florida counties, including Baldwin County. We operate 24 hours a day, seven days a week, 365 days a year. Even on Christmas morning, at least two meteorologists are working. If it's like the Christmas of 2012 when tornadoes impacted our region, that number is quadrupled!

The NWS is a federal agency comprising 122 Weather Forecast Offices around the country, each with its own County Warning Area. A smaller area of counties or parishes allows us to provide localized information to our partners and the communities we serve. Our mission is to "provide weather, water, and climate data, forecasts, warnings, and impact-based decision support services for the protection of life and property and enhancement of the national economy." Simply put, we are here to protect life and property, and countless people are working around the clock to ensure we can meet our mission. Every local NWS office is made up of around 15 meteorologists, three electronic technicians, an Information Technology Office,

and an Administrative Service Assistant, all of whom work diligently to ensure that we have the resources and capabilities to meet our mission.

During quiet weather, we work closely with our partners through meetings and detailed exercises. When significant weather approaches, we routinely brief state, county, and city leaders on what to expect so they can make the best decisions for their residents. After the storm, we conduct post-storm surveys to accurately assess storm damage and provide weather updates to emergency responders as they respond to the storm's aftermath. At the same time, we provide the public with up-to-date information before, during, and after a storm that is available on our website ([weather.gov/mob](http://weather.gov/mob)) and Facebook and X (@NWSMobile). You can also reach us at (251) 633-6443. Have you ever heard a tornado warning and wondered where that came from? It came directly from your local National Weather Service office!

What are some ways you can prepare for hazardous weather before it happens? Have a plan! It's important to know where you are located and what type of weather hazards may your location, even on vacation! Having a plan helps you be better prepared so that when the bad weather strikes, you can put your plan into

action and protect yourself and your loved ones. Also, staying weather aware is essential so you know beforehand when you may have to implement your safety plan. We encourage everybody to have more than one way of receiving critical weather alerts. There are several methods of obtaining warnings: weather radios, cell phones, local TV, and radio. We encourage everybody to ensure they have a weather safety plan. For Baldwin County residents, this means not just knowing what to do in the event of a tornado or flood but having a plan developed ahead of time for when the next hurricane approaches. Your local National Weather Service and Baldwin County Emergency Management Agency can provide helpful information to help develop your plan!

## HURRICANE NAMES 2024

**Alberto**  
**Beryl**  
**Chris**  
**Debby**  
**Ernesto**  
**Francine**  
**Gordon**  
**Helene**  
**Isaac**  
**Joyce**  
**Kirk**

**Leslie**  
**Milton**  
**Nadine**  
**Oscar**  
**Patty**  
**Rafael**  
**Sara**  
**Tony**  
**Valerie**  
**William**



# STORM TERMINOLOGY

**Storm Surge Warning:** There is a danger of life-threatening inundation from rising water moving inland from the shoreline somewhere within the specified area, generally within 36 hours. If you are under a storm surge warning, check for evacuation orders from your local officials.

**Hurricane Warning:** Hurricane conditions (sustained winds of 74 mph or greater) are expected somewhere within the specified area. NHC issues a hurricane warning 36 hours in advance of tropical storm-force winds to give you time to complete your preparations. All preparations should be complete. Evacuate immediately if so ordered.

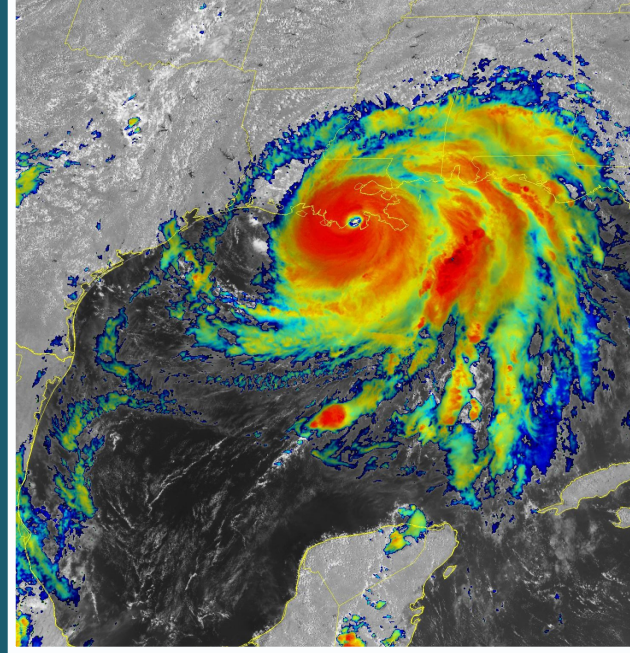
**Tropical Storm Warning:** Tropical storm conditions (sustained winds of 39 to 73 mph) are expected within your area within 36 hours.

**Extreme Wind Warning:** Extreme sustained winds of a

major hurricane (115 mph or greater), usually associated with the eyewall, are expected to begin within an hour. Take immediate shelter in the interior portion of a well-built structure.

**Storm Surge Watch:** There is a possibility of life-threatening inundation from rising water moving inland from the shoreline somewhere within the specified area, generally within 48 hours.

**Hurricane Watch:** Hurricane conditions (sustained winds of 74 mph or greater) are possible within your area. Because it may not be safe to prepare for a hurricane once winds reach tropical storm force, The NHC issues hurricane watches 48 hours before it anticipates tropical storm-



force winds.

**Tropical Storm Watch:** Tropical storm conditions (sustained winds of 39 to 73 mph) are possible within the specified area within 48 hours.

## Island Enclosures



& Improvements LLC

251-968-9777

3757 Gulf Shores Parkway Suite E, Gulf Shores, AL 36542

Licensed  
Alabama  
Residential  
HomeBuilder  
/ Remodeler  
#16880

Locally Owned \* Licensed & Insured \* Serving Baldwin County 19 years



- Colonials
- Crimsafe
- Eyewall Armor
- Fabric Shield
- Bahamas
  
- Impact Windows
- Accordions
- Roll-Up Shutters
- Therma-Tru Doors Impact
- Aluminum / Clear Panels

# SHELTERS OF LAST RESORT

## INFORMATION ABOUT BALDWIN COUNTY COMMISSION SHELTERS

By: Amanda Thweatt (Emergency Management Specialist, Baldwin County EMA)

The shelters of last resort are opened on an as needed basis once the Baldwin County Commission has declared a State of Local Emergency due to the threat of a tropical storm or hurricane. The two main facilities will be the Baldwin County Coliseum in Robertsdale, and the Baldwin County Level II Shelter in Bay Minette. The county is happy to provide this space to residents that are unable to leave the county, but need a safer place to stay until hurricane conditions have subsided and it is safe for residents to return home.

What is provided at the shelters?

Breakfast, lunch, and dinner with a light snack between meals. Though we try to have a menu that all can eat, we are aware that there are some dietary restrictions we cannot meet, therefore, please bring any foods that you need to meet your dietary needs (at least 3 days). Baldwin County EMA will have a limited number of cots, blankets, and pillows available. Amenities provided will be washer & dryer, restrooms, and showers.

We welcome you to drive to the shelter, but be aware Baldwin County EMA, Baldwin County Commission and the owner of the shelter are not responsible for damage sustained to the vehicle by other shelter residents or storm impacts. You may also call Baldwin Regional Area Transportation Systems (BRATS) at 251-972-6817 to schedule a ride to the Baldwin County Shelter. Once a State of Local Emergency has been declared, BRATS will WAIVE fees to and from the shelters.

What do you need to bring to the shelter?

Personal care items (i.e. toothbrush, toothpaste, soap, towels, washcloths, deodorant, etc.), at least 3 days' worth of clothes per person, personal identification, medications, cell phone and charger, sleeping bags, blankets and pillows are suggested as items to bring to a shelter.

You will be required to register with the administration staff. Photo identification is required. If you need to leave for any reason, please sign in and out with shelter staff, and let them know if you do not plan to return to the shelter.

Security will be provided at each of the shelters by local law enforcement.

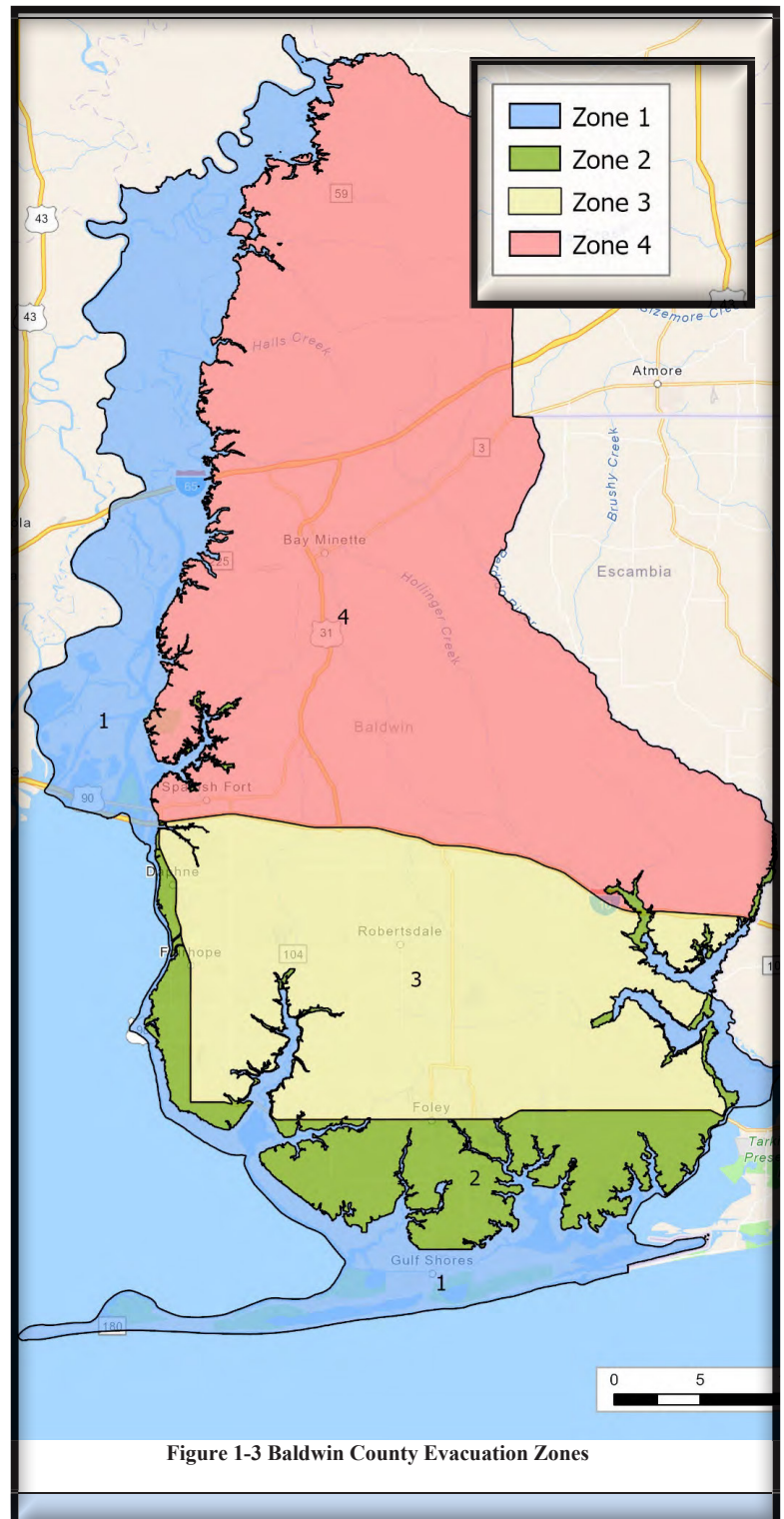


Figure 1-3 Baldwin County Evacuation Zones

# EVACUATION INFORMATION

## NAVIGATING EVACUATIONS AND KEY GUIDANCE

By: Amanda Thweatt (Emergency Management Specialist, Baldwin County EMA)

Evacuations may be ordered under circumstances where lives are in danger due to a threat. For example, evacuations may be ordered because of a fire, gas leak, hazardous materials accident, flood or tropical weather. If at any time circumstances exist where you or your family feel threatened or endangered, you may choose to leave your home, school, or workplace to avoid those situations. There are two types of evacuations affiliated with hurricanes: mandatory and voluntary. Mandatory evacuations are orders issued by the Governor of Alabama. Voluntary evacuation orders may be issued in advance of hurricane impacts prior to the mandatory evacuation. Anytime there is an evacuation order, please follow the guidance of the local officials and leave the area of danger!

### **BALDWIN COUNTY EVACUATION ROUTES:**

- Gulf Shores and Orange Beach residents: Highway 59, Foley Beach Express & Baldwin Beach Express
- Central & South Baldwin County residents: Highway 59 North & Baldwin Beach Express
- Eastern Shore residents: State Highway 181 & Highway 98 North
- Lillian area residents: County Road 87

East side of Pleasure Island (Orange Beach & Ono Island): Foley Beach Express via toll bridge & Baldwin Beach Express (toll will be lifted for northbound traffic during evacuations.)

Baldwin County EMA releases pertinent information to the public on shelter openings and evacuations through public service announcements. During a local state of emergency, Baldwin County residents with no means of transportation will need to contact Baldwin Regional Area Transportation System (BRATS) for home pick-up service and transport to local shelters. BRATS has buses readily available for wheelchair bound clients. Following the execution of a mandatory evacuation order, BRATS will suspend its fees and additionally transport residents wishing to evacuate the county to pre-designated Evacuation Pick-up Points (PUPs), listed below:

- **BALDWIN COUNTY HIGH SCHOOL, THE HUB**
- **DAPHNE HIGH SCHOOL**
- **FAIRHOPE HIGH SCHOOL**
- **FOLEY HIGH SCHOOL**
- **LOXLEY MUNICIPAL PARK**
- **ROBERTSDALE HIGH SCHOOL**

Baldwin County Board of Education (BCBE) school buses will then pick residents up from the PUPs and transport them to Baldwin County High School in Bay Minette. Citizens are encouraged to schedule transportation in advance.

BRATS may be contacted by calling: (251) 972-6817.

Citizens who are non-ambulatory, bed-bound or who have special medical conditions should contact local Emergency Medical Services (EMS) for assistance.

Once a local state of emergency or mandatory evacuation order has been issued, EMS professionals will begin picking up South Baldwin, Eastern Shore, and Central Baldwin residents and will transport them to local hospitals, and local medical needs shelters and electrical support shelters.

Residents are encouraged to schedule transportation with local EMS professionals in advance. Please be aware, a fee could be charged.

# FLOOD INFORMATION

## BE AWARE OF FLOOD INFORMATION PERTAINING TO BALDWIN COUNTY

### SUBSTANTIAL IMPROVMENT/ DAMAGE REQUIREMENTS

The National Flood Insurance Program (NFIP) and Baldwin County Building Department requires that if the cost of reconstruction, rehabilitation, addition or other improvements to a building equals or exceeds 50% of the market value, then the building must meet the same construction requirements as a new building. The permits required for construction ensure that buildings are in compliance with the NFIP and Baldwin County Flood Damage Prevention Ordinance. Contact the Baldwin County Building Department at (251) 972-6837 to obtain additional information on the 50% rule and a copy of the Flood Damage Prevention Ordinance.

### FLOOD PROTECTION MEASURES

Every year, flooding causes more property damage in the United States than any other type of natural disaster. While recent construction practices and regulations have made new homes less prone to flooding, many existing structures remain susceptible. Throughout the country there is a growing interest from property owners to develop practical and cost-effective methods for reducing or eliminating exposure to flooding. There are many ways you can help protect your property and your possessions from flood damage. Property protection measures publications and assistance is available to you by contacting the Baldwin County Building Department at (251) 972-6837 or by visiting your local libraries.

### NATURAL AND BENEFICIAL FUNCTIONS

The wetlands within Baldwin County are indispensable and fragile natural resources with significant development constraints due to flooding, erosion and soil limitations. In their natural state, wetlands serve man and nature. They provide habitat areas for fish, wildlife and vegetation; water quality maintenance and pollution control; flood control; erosion control; natural resource education; and many other functions. Damaging or destroying wetlands threatens public safety and the general welfare. It is therefore necessary for Baldwin County to ensure maximum protection for wetlands by

discouraging development activities that may adversely affect wetlands.

Baldwin County regulates stormwater management policies through the Subdivision Regulations Department for all new developments. Developments that produce an increase in the amount of stormwater runoff are required to construct stormwater management facilities.

Baldwin County has provisions that impose requirements on persons engaged in land disturbing activities that require planning and implementation of effective sedimentation controls for individual lots and subdivision development sites.

For more information regarding erosion, sedimentation or stormwater management requirements for new developments, contact the Baldwin County Planning & Zoning Department at (251) 580-1655 or the Subdivision Permitting Department at (251) 937-0278.

### MAP OF THE LOCAL FLOOD HAZARD

The Baldwin County Building Department maintains Federal Insurance Rate Maps (FIRMs). These maps are available for public inspection during normal business hours or can be accessed on the Building Department website at [www.BaldwinCountyAL.gov](http://www.BaldwinCountyAL.gov). They may also be viewed at your local library. Upon written request, you may obtain a Flood Determination of your property as it relates to a local flood hazard area by contacting the Baldwin County Building Department at (251) 972-6837. Copies of Elevation Certificates can also be obtained at this office and from their website.

### FLOOD HAZARD

Baldwin County is virtually surrounded by water, with the exception of several miles in the extreme northeast bordering Escambia County, with numerous bays, rivers, streams and tributaries within the interior portions of the county. Baldwin County faces its greatest threat of flooding from hurricanes and tropical storms, but coastal flooding can occur year-round. These storms can destroy many properties and cause damage to countless others. Even though property may have escaped flooding or damage from previous storms, it may not escape flooding or damage from the next storm. To determine if your property is located in a Special

Flood Hazard Area (SFHA), contact the Baldwin County Building Department at (251) 972-6837 or view the flood maps on their website.

## **FLOOD WARNING SYSTEM**

Baldwin County's Emergency Management Agency wants to encourage residents and visitors to sign up for local, emergency alerts by visiting [AlertBaldwin.com](http://AlertBaldwin.com). This system allows National Weather Service of Mobile to provide emergency notifications for hazardous weather and/or emergency incidents, such as flooding. There are four Flood Monitoring Stations located within Baldwin County that are monitored by the U.S. Department of the Interior, U.S. Geological Survey Water Resources Division, the National Weather Service and the Baldwin County Emergency Management Agency. This information is used to monitor stream flow and stream height for early detection of rising waters. Baldwin County uses the EAS alerting system through local radio stations and the National Weather Service as well as local media outlets. NOAA Weather Radios are installed in public and private schools as well as all county and municipal buildings. In the event of flood hazards, tune into local radio and TV stations for information. For additional information on Baldwin County's Flood Warning Threat Recognition Program or a list of the area television and radio stations contact the Emergency Management Agency at (251) 972-6807.

## **FLOODPLAIN DEVELOPMENT PERMITS**

Within the floodplains of Baldwin County, ALL development, not just construction, require permits. Extra requirements are involved when developing in the floodplain. Before you alter (fill, grade, clear, etc.) your property, construct a building or otherwise develop your property, contact the Baldwin County Building Department at (251) 972-6837; the Planning & Zoning Department at (251) 580-1655; and the Highway Subdivision Permitting Department at (251) 937-0278 to determine if you will be required to obtain a permit or to report any possible unauthorized development within the floodplain.

## **FLOOD SAFETY**

Flood safety protection measures that are to be taken in the event of a hurricane or any other major storm. These measures include having your electricity and gas turned off by the power company; not driving or walking through flowing water or any flooded area; and staying clear of any unstable stream banks. Be sure and stay

tuned to your local television or radio station for weather updates. If you are required to evacuate, try to move to the house of a friend or family member not affected by the impending flood hazard. If you live in a mobile home, plan to evacuate at the first notice. Everyone should rehearse your evacuation plans with all household members and plan to leave early to avoid traffic delays. For additional information regarding Baldwin County's flood warning program, contact Baldwin County Emergency Management Agency at (251) 972-6807.

## **FLOOD INSURANCE**

Most mortgage lenders require flood insurance based on the location and elevation of the property. Flood damage, unlike wind damage, is not covered by homeowner's policies and must be purchased separately. Since Baldwin County is an NFIP community, federally backed flood insurance is available. There is typically a 30-day waiting period before a new flood insurance policy becomes effective. You are eligible for flood insurance, regardless of whether your property has never flooded, or has flooded several times in the past. All properties secured by a federally backed mortgage must carry flood insurance. For more information about flood insurance, property owners should contact their insurance agent or call the NFIP's toll Baldwin County is an active participant in the National Flood Insurance Program (NFIP) which provides federally backed flood insurance in communities that enact and enforce floodplain regulations. Since its inception in 1968, the program has been successful in helping flood victims get back on their feet. This is important since property owners who hold a federally backed mortgage must purchase flood insurance if the property is located within a Special Flood Hazard Area (SFHA). Baldwin County began its participation in the National Flood Insurance (NFIP) Community Rating System (CRS) Program in 1994. Baldwin County currently holds a Class 7 CRS rating, which equates to a 15% discount on new or renewing flood insurance policies for all SFHA properties. For additional information regarding the NFIP or CRS Program, contact the office of the Baldwin County Building Department at (251) 972-6837 or Planning & Zoning Department at (251) 580-1655.



COASTAL ALABAMA  
COMMUNITY COLLEGE



**FUELING OUR LOCAL  
WORKFORCE**



# Downed and Dangerous

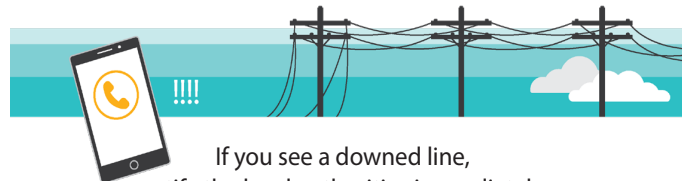
If you see a downed power line, assume it's energized and dangerous. Avoid going near it or putting anything in contact with it.



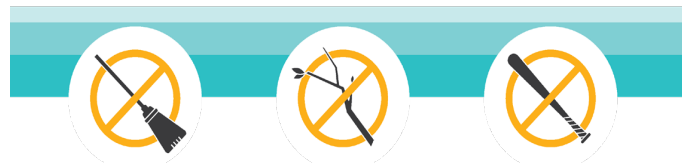
Downed power lines can energize the ground up to 35 ft. away - so keep your distance.



Never drive over a downed line or through water that's touching the line.



If you see a downed line, notify the local authorities immediately.



Never try to move a downed power line. Even if you think it's deenergized or you're using a non-conductive item, this won't prevent injury or death!

**PAUL DAVIS**<sup>®</sup>  
RECOVER • RECONSTRUCT • RESTORE



**FIRE**



**WATER**



**MOLD**



**CONTENTS**



**BIOHAZARD**



**ODOR**



**THE DIFFERENCE MAKERS™**  
**251-948-2291**



**BALDWIN  
EMC**

[www.baldwinemc.com](http://www.baldwinemc.com)  
251-989-6247

# STAY INFORMED

## MISINFORMATION DURING EMERGENCIES

By: Jessica Waters (Public Information Officer, Baldwin County EMA)

In today's digital age, information spreads rapidly across social media platforms, sometimes at the speed of a click. While this can be a powerful tool for disseminating important updates during emergencies, it also opens the door to the spread of misinformation and fake news. As your trusted source for emergency information, the Baldwin County Emergency Management Agency (EMA) urges residents to be vigilant and discerning when consuming news on social media platforms.

Fake news and misinformation can pose significant risks during emergencies, leading to confusion, panic, and even harm. That's why it's crucial to rely on credible and accredited sources for accurate information. Here are some key tips to help you navigate social media safely during emergencies:

### 1. VERIFY THE SOURCE:

Before sharing or acting on information received through social media, take a moment to verify the source. Look for information from reputable sources such as local news media, the National Weather Service of Mobile, and the Baldwin County EMA. These organizations adhere to strict standards of accuracy and reliability.

### 2. CHECK FOR OFFICIAL STATEMENTS:

Official statements from government agencies, emergency services, and local authorities are your best source of reliable information during emergencies. Follow the social media accounts of these organizations to receive timely updates directly from the source.

### 3. BE CAUTIOUS OF RUMORS:

Rumors and unverified information can escalate quickly on social media platforms. Avoid spreading rumors or unconfirmed reports and encourage others to do the same. Stick to sharing information from credible sources to help prevent the spread of misinformation.

### 4. REPORT SUSPICIOUS CONTENT:

If you come across content on social media that appears to be fake news or misinformation, report it to the platform's administrators. Reporting suspicious content helps mitigate its spread and ensures that social media platforms remain safe and reliable sources of information during emergencies.

### 5. STAY INFORMED THROUGH ACCREDITED CHANNELS:

Make it a habit to stay informed through accredited channels such as local news media, official government websites, and trusted weather services. These sources provide verified and up-to-date information to help you make informed decisions and stay safe during emergencies.

By staying vigilant and relying on trusted sources for information, we can combat the spread of fake news and ensure that accurate information reaches our community during emergencies. Together, let's stay informed, stay connected, and stay safe.

For the latest updates and information during emergencies, follow the Baldwin County Emergency Management Agency on social media and visit our website. Remember, when it comes to your safety and well-being, trust matters.

# PET PREPAREDNESS

## ENSURING PAW-SITIVE PREPAREDNESS AHEAD OF EMERGENCIES

By: Jessica Waters (Public Information Officer, Baldwin County EMA)

Our furry companions are integral members of our families, and ensuring their safety and well-being during challenging times is so important.

Pets rely on us for their care and protection, especially in times of crisis. Therefore, it is essential for pet owners to have a comprehensive plan in place to safeguard their beloved animals. Here are some key steps to consider:

### 1. IDENTIFICATION AND DOCUMENTATION:

Make sure your pets are properly identified with collars, tags, and microchips containing up-to-date contact information. Keep recent photos of your pets along with their medical records and vaccination history in a waterproof container.

### 2. EMERGENCY SUPPLIES:

Prepare an emergency kit for your pets, including food, water, medications, first aid supplies, sanitation items, and comfort items such as blankets or toys. Ensure you have at least a week's supply of essentials stored in a portable container for easy transport.

### 3. SAFE SHELTER:

Identify pet-friendly shelters or hotels in advance where you can evacuate with your pets if needed. Baldwin County emergency shelters DO NOT accept animals, so it's crucial to have alternatives lined up beforehand. Reach out to local animal shelters or veterinary clinics for assistance if necessary. To view a list of pet-friendly hotels in Alabama, please visit [www.petswelcome.com/](http://www.petswelcome.com/)

[pet-friendly-hotels/alabama](http://pet-friendly-hotels/alabama).

### 4. TRANSPORTATION:

Have a sturdy carrier or crate for each pet to safely transport them during evacuations. Practice getting your pets accustomed to being confined in their carriers to reduce stress during emergencies.

### 5. EMERGENCY CONTACTS:

Keep a list of emergency contacts, including veterinarians, animal shelters, and pet-friendly hotels, both locally and out-of-state. This will be invaluable in case you need assistance or information during an evacuation.

### 6. EMERGENCY PLAN:

Develop an evacuation plan that includes your pets. Assign specific responsibilities to family members or friends to ensure a smooth evacuation process.

### 7. STAY INFORMED:

Stay informed about potential emergencies or disasters in your area through local news, weather alerts, and official



channels. Follow instructions from authorities and be prepared to evacuate if necessary, ensuring your pets are included in your evacuation plans.

Remember, being prepared is the key to effectively managing emergencies and keeping your pets safe. By taking proactive steps to plan for their well-being, you can minimize stress and ensure the best possible outcome for both you and your furry friend during challenging times.

For more information and resources on pet preparedness, please visit our website or contact the Baldwin County Emergency Management Agency. Together, let's ensure the safety and security of all members of our community, including our beloved pets.

An infographic titled "PETS SAFETY TIPS" with a subtitle "Hot Weather Rules For Pets". It features illustrations of a cat and a dog. Below the title are four safety tips, each with an icon and text: 1. "KEEP YOUR PET HYDRATED" with an icon of a water bottle and a paw print. 2. "DON'T LEAVE YOUR PET IN THE CAR" with an icon of a car and a thermometer. 3. "KEEP PAWS AWAY FROM HOT PAVEMENT" with an icon of a paw print on a hot surface. 4. "KNOW SIGNS OF OVERHEATING" with an icon of a sun and a dog's head with steam coming out of its ears.



# SENIOR CONSIDERATIONS

## COUNCIL ON AGING

*By: Kelly Childress (Director, Council on Aging)*

### FUNCTIONAL ACCESS AND MEDICAL NEEDS FOR SENIOR ADULTS

Evacuating your home is difficult under any circumstance, but for individuals with medical, functional access or special needs, the evacuation process requires a bit more planning effort. Having a plan will alleviate some of the stress and anxiety that often accompanies disasters. Talk to your doctor to include an emergency supply of essential medications in your emergency kit. Filling prescriptions after a disaster or out of state can be challenging following a disaster. It's a good idea to include critical medical documents in your emergency kit with your other important documents. Should you evacuate and require medical attention, it will be helpful to have your medical records for responders.

### CAREGIVER'S GUIDE FOR SHELTERING & EVACUATING

Caregivers may have special considerations and additional items to supplement the standard emergency kit should an emergency or evacuation occur. Considerations will be dependent on the individual needs of the patient. Some considerations may include:

- Special equipment for respiratory, dietary or mobility
- Personal care items
- Medications
- Communication needs
- Service animals and supplies for the service animal
- Electrical needs for supportive equipment

### BALDWIN COUNTY COUNCIL ON AGING - S.E.E.K. PROGRAM

#### **Senior Essentials Emergency Kit (SEEK)**

The Baldwin County Council on Aging is helping the elderly homebound and seniors in their preparedness planning. Seniors who will be evacuating to a shelter OR staying home in the event of a hurricane can both benefit from this program.

This program emphasizes the importance of an evacuation plan, providing individuals with a packet organizing and containing personal information, emergency contacts, medical history and special needs. Participants in the SEEK program will be notified by a representative from the Council on Aging prior to an impending disaster/emergency to make certain they have a plan in place and all necessary

supplies for their kits, including their medications. If you or someone you know is a senior homebound or will be evacuating to a shelter, please call the Council on Aging at (251) 972-8506 for more details.

### CONSIDERATIONS FOR SERVICE ANIMALS

Service animals will be impacted by disasters just as people are. Be patient with your service animals as well as pets as they find a routine and adapt to evacuation, relocation or the return to damaged property.

- Identification
- Food and water
- Veterinary records
- Kennel/crate
- Leash and collar
- Toy or comfort items

### DEALING WITH THE STRESS OF DISASTERS

Remember to be patient during the aftermath of a disaster. Understand that clean up and recovery will take time. The anger, disbelief, anxiety and depression are natural responses to a traumatic event. Many even find themselves on an emotional rollercoaster. Know that you are NOT alone. Be mindful that the impacts of stress will affect young children and older adults more significantly. Here are some identifiers that indicate stress:

- Irritability
- Depression
- Confusion
- Anxiety
- Hyperactivity
- Eating disorders
- Sleeping disorders
- Exhaustion

Additional love and support to disaster victims will be critical to helping them cope. People need reassurance that they are safe and that life will return to normal. Some things that you can do to help alleviate some of the symptoms of stress are:

- Eat healthy
- Exercise
- Talk with counselors, spiritual leaders or trusted friends
- Try to maintain a schedule where you consistently rest and eat at regular intervals.

# RETURNING HOME

## NAVIGATING THE RETURN AFTER A DISASTER

By: Jessica Waters (Public Information Officer, Baldwin County EMA)

The aftermath of a disaster can be a challenging and emotional time for residents as they navigate the process of returning home and rebuilding their lives. Here are some essential tips to consider as you safely return home after a disaster:

**For Official Clearance:** Before returning home after a disaster, wait for official clearance from local authorities and Baldwin County EMA. Even if the immediate danger has passed, there may still be hazards such as unstable structures, downed power lines, or contaminated water that pose risks to residents. Follow evac-

uation orders and instructions from local authorities to ensure your safety.

**Assess the Damage:** Once you have been cleared to return home, assess the damage to your property carefully. Take photographs or videos of any damage for insurance purposes and documentation. Be cautious when entering your home, as structural damage may not be immediately visible, and hazards may be present.

**Check Utilities:** Before re-entering your home, check utilities such as water, gas, and electricity. If you suspect any damage or if utilities have

been turned off during the evacuation, contact the appropriate authorities or utility companies for assistance. Do not attempt to turn utilities back on yourself.

**Be Mindful of Health Risks:** After a disaster, there may be health risks associated with returning home, such as mold, contaminated water, or hazardous materials. Take precautions to protect yourself and your family by wearing appropriate personal protective equipment, such as gloves and masks, when cleaning up debris or handling damaged materials. Follow guidelines from health authorities to minimize health risks.

**Plan for Recovery:** As you begin the recovery process, develop a plan for rebuilding and restoring your home and community. Work with local authorities, insurance companies, and disaster assistance agencies to access resources and support for recovery efforts. Take one step at a time and prioritize tasks based on safety and necessity.

**Stay Informed:** Stay informed about recovery efforts, assistance programs, and community resources through official channels such as the Baldwin County EMA, local government websites, and community organizations. Regularly check for updates and follow instructions from authorities to ensure a smooth recovery process.

Returning home after a disaster can be a daunting task, but with careful planning, patience, and support, residents can rebuild and recover. For more information and resources on disaster recovery, visit our website or contact our office.



[www.BaldwinCountyAL.gov/EMA](http://www.BaldwinCountyAL.gov/EMA)

BALDWIN COUNTY EMERGENCY MANAGEMENT AGENCY

# BUSINESS TIPS

## TIPS FROM THE BETTER BUSINESS BUREAU

By: Monde Donaldson (Vice President, BBB Educational Foundation)

### PROTECT YOURSELF FROM STORM CHASERS

Hurricanes and tornadoes often bring out the best in people, as strangers reach out to help others in need. Unfortunately, “storm chasers” emerge on devastated areas after a storm scamming those residents who are in desperate need of clean-up help. The Better Business Bureau Serving Central & South Alabama offers these specific tips for victims of natural disasters.

### ASSESS THE DAMAGE AND TAKE PICTURES

Documenting your damage after a storm is of great importance for insurance claims.

### CONTACT YOUR INSURANCE COMPANY

Ask about your coverage. Save receipts including food, temporary lodging or other expenses covered by your policy.

### DO YOUR RESEARCH

Find businesses you know you can trust on BBB.org. Get all bids in writing.

### RESIST HIGH-PRESSURE SALES

Storm chasers use tactics such as “good deal” Disaster victims should never feel forced to make a hasty decision or to choose an unknown contractor.

### BE ESPECIALLY CAREFUL OF DOOR-TO-DOOR CONTRACTORS

Make sure businesses are licensed. Ask for identification.

### DON'T SIGN OVER INSURANCE CHECKS TO CONTRACTORS

Get an invoice from the contractor and pay them directly preferably with a credit card. BBB is also warning contractors to beware of storm chasers who offer to pay local construction companies substantial amounts of money to use the business's established names, rep-

utation and phone. They masquerade as local business, collect the insurance money and then move on, leaving the real business to deal with unsatisfied customers.

The BBB also has several tips Baldwin County residents should keep in mind when preparing for severe weather. These include keeping insurance policies, birth certificates and other personal documents in safe and secure spot, having a banking app on your phone to be able to access your finances photographing the inside and outside of your house and knowing the location of your utility cutoffs.

To contact the BBB go to BBB.org or call 800-828-5274. The BBB has many storm-related resources. The Better Business Bureau Serving Central and South Alabama can also be found on Facebook, Twitter and LinkedIn.

We are here for you, no matter the weather.

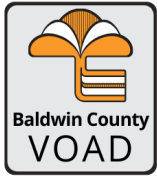
**DAPHNE UTILITIES**  
WATER • NATURAL GAS • SEWER

[www.daphneutilities.com](http://www.daphneutilities.com)

# VOLUNTEER ORGANIZATIONS

## THE CRUCIAL ROLE OF BALDWIN COUNTY VOAD IN DISASTER RESPONSE

By: Jessica Waters (Public Information Officer, Baldwin County EMA)



In times of crisis, the strength of a community is measured not just by the efficiency of its emergency services, but also by the collective response of its citizens and organizations. In Baldwin County, we recognize the paramount importance of coordination, communication, and collaboration among various entities during times of disaster. This is precisely why the Baldwin County Voluntary Organizations Active in Disaster (BCVOAD) plays a pivotal role in ensuring our community's resilience and recovery.

At the heart of BCVOAD lies a simple yet powerful mission: to foster efficient and coordinated service to people in Baldwin County affected by disaster while eliminating unnecessary duplication of effort.

BCVOAD serves as a platform for diverse volunteer organizations including churches, private businesses, non-profits, Chambers of Commerce, and more. We know that so many of these organizations in our area have a heart to serve and will likely be helping our community following a major disaster. BCVOAD is meant to serve as the coordination of those resources and volunteers.

In times of crisis, the importance of BCVOAD cannot be overstated. Here's why:

1. By pooling resources, expertise, and manpower, BCVOAD ensures that assistance reaches those in need swiftly and efficiently. Rather than working alone, member organizations collaborate seamlessly, maximizing the impact of their efforts.

2. Disasters often leave communities grappling with

several challenges, from shelter and food to medical care and emotional support. BCVOAD facilitates a disaster response that ensures no aspect of recovery is overlooked.

3. In the chaotic aftermath of a disaster, the risk of duplication of efforts is high, leading to inefficiencies and wasted resources. BCVOAD serves as a central coordinating body, streamlining efforts, ensuring that resources are allocated fairly, and maximizing the impact of every dollar and volunteer hour contributed.

4. Ultimately, the goal of BCVOAD extends beyond immediate disaster response. By fostering collaboration and coordination among diverse stakeholders, BCVOAD contributes to the long-term resilience of our communities. Through shared knowledge, resources, and best practices, BCVOAD empowers communities to better prepare for, respond to, and recover from future disasters.

As we navigate the uncertainties of an ever-changing world, the importance of organizations like BCVOAD cannot be overstated.

At Baldwin EMA, we are proud to support BCVOAD and the invaluable work the organization does in keeping our community strong. There's a good chance, if you've met anyone from Baldwin EMA, you've heard us speak about VOAD. This is because we know how important it is to continue recruiting membership for VOAD. If your organization is interested in becoming a member, please visit [baldwincountyal.gov/EMA/VOAD](http://baldwincountyal.gov/EMA/VOAD). We look forward to seeing you at the quarterly meetings.



# ARE YOU INTERESTED IN JOINING YOUR LOCAL VOLUNTEER FIRE DEPARTMENT?

---

BARNWELL VOLUNTEER FIRE DEPARTMENT **STATION 38**  
BEAT VOLUNTEER FIRE DEPARTMENT  
BELFREST VOLUNTEER FIRE DEPARTMENT **STATION 64**  
BON SECOUR VOLUNTEER FIRE DEPARTMENT **STATION 24**  
CROSS ROADS VOLUNTEER FIRE DEPARTMENT **STATION 78**  
ELBERTA VOLUNTEER FIRE DEPARTMENT **STATION 31**  
ELSANOR VOLUNTEER FIRE DEPARTMENT **STATION 53**  
FAIRHOPE VOLUNTEER FIRE DEPARTMENT **STATION 58**  
FOLEY VOLUNTEER FIRE DEPARTMENT **STATION 30**  
FORT MORGAN VOLUNTEER FIRE DEPARTMENT **STATION 28**  
GATESWOOD VOLUNTEER FIRE DEPARTMENT **STATION 67**  
JOSEPHINE VOLUNTEER FIRE DEPARTMENT **STATION 33**  
LILLIAN VOLUNTEER FIRE DEPARTMENT **STATION 37**  
LOTTIE VOLUNTEER FIRE DEPARTMENT **STATION 91**  
LOXLEY VOLUNTEER FIRE DEPARTMENT **STATION 60**  
MAGNOLIA SPRINGS VOLUNTEER FIRE DEPARTMENT **STATION 34**  
MARLOW VOLUNTEER FIRE DEPARTMENT **STATION 44**  
OYSTER BAY ROADS VOLUNTEER FIRE DEPARTMENT **STATION 22**  
PERDIDO VOLUNTEER FIRE DEPARTMENT **STATION 22**  
PERDIDO BEACH VOLUNTEER FIRE DEPARTMENT **STATION 35**  
PINE GROVE VOLUNTEER FIRE DEPARTMENT **STATION 71**  
RABUN VOLUNTEER FIRE DEPARTMENT **STATION 80**  
ROBERTSDALE VOLUNTEER FIRE DEPARTMENT **STATION 50**  
ROSINTON VOLUNTEER FIRE DEPARTMENT **STATION 63**  
SEMINOLE VOLUNTEER FIRE DEPARTMENT **STATION 57**  
SILVERHILL VOLUNTEER FIRE DEPARTMENT **STATION 52**  
SPANISH FORT VOLUNTEER FIRE DEPARTMENT **STATION 68**  
STAPLETON VOLUNTEER FIRE DEPARTMENT **STATION 72**  
STOCKTON VOLUNTEER FIRE DEPARTMENT **STATION 88**  
STYX RIVER VOLUNTEER FIRE DEPARTMENT **STATION 65**  
SUMMERDALE VOLUNTEER FIRE DEPARTMENT **STATION 40**  
TENSAW VOLUNTEER FIRE DEPARTMENT **STATION 90**  
WHITE HOUSE FORKS VOLUNTEER FIRE DEPARTMENT **STATION 74**

CONTACT: [BCEMA@BALDWINCOUNTYAL.GOV](mailto:BCEMA@BALDWINCOUNTYAL.GOV)



# TORNADO SHELTERS

The Baldwin County Commission owns or has access to community safe rooms for Tropical Weather events, but these are not designed for the quick access needed in severe storms and tornadoes. Any tornado shelters in Baldwin County are privately owned.

The county shelters of last resort/safe rooms (listed on our website: [baldwincountyal.gov](http://baldwincountyal.gov)) are opened as needed during a hurricane.

Those staying in condos, RV sites, and mobile home communities should speak to managers/owners at the facility about where they recommend sheltering on or off site.

We also recommend seeking shelter with friends or family if you have loved ones nearby, especially for those who live in mobile or manufactured homes.

The primary consideration should be individual and family plan identification of a safer place for severe weather and tornadoes.

## SHELTERING IN PLACE, OR SAFER PLACES

Whether you are at home, work or anywhere else you frequent regularly, there may be situations when it's best to stay where you are and avoid any uncertainty outside.

## HERE ARE SOME INDICATORS AND STEPS TO TAKE IF THE SITUATION ARISES:

- Use common sense and available information to assess the situation and determine if there is immediate danger.
- Watch TV and listen to the radio often for official news and instructions as they become available.
- Bring your family and pets inside.
- Lock doors, close windows, air vents and fireplace dampers.
- Turn off fans, air conditioning and forced air heating systems.
- Take your emergency supply kit unless you have reason to believe it has been contaminated.
- Go into an interior room on the lowest floor with the fewest windows
- Protect yourself by covering your head or neck with your arms and putting materials such as furniture and blankets around or on top of you.

## IF YOU'RE IN YOUR CAR, DO NOT TRY TO OUTFRAN A TORNADO. ADDITIONALLY:

- Do not go under an overpass or bridge. You're safer in a low, flat location.
- Watch out for flying debris that can cause injury or death.

## EVEN AFTER A TORNADO PASSES, IT'S IMPORTANT TO STAY ALERT AND USE CAUTION WHEN CLEARING DEBRIS.

- Stay clear of fallen power lines or broken utility lines.
- Wear appropriate gear during clean-up, such as thick-soled shoes, long pants, and work gloves, and use appropriate face coverings or masks if cleaning mold or other debris.
- Do not enter damaged buildings until you are told they are safe.

## DIFFERENCE BETWEEN A TORNADO WATCH AND A TORNADO WARNING

- Tornado Watch: Be Prepared! Tornadoes are possible in and near the watch area. Review and discuss your emergency plans and check supplies and your safe room. Be ready to act quickly if a warning is issued or you suspect a tornado is approaching. Acting early helps to save lives! Watches are issued by the Storm Prediction Center for counties where tornadoes may occur. The watch area is typically large, covering numerous counties or even states.
- Tornado Warning: Take Action! A tornado has been sighted or indicated by weather radar. There is imminent danger to life and property. Move to an interior room on the lowest floor of a sturdy building. Avoid windows. If in a mobile home, a vehicle or outdoors, move to the closest substantial shelter and protect yourself from flying debris. Warnings are issued by your local forecast office. Warnings typically encompass a much smaller area (around the size of a city or small county) that may be impacted by a tornado identified by a forecaster on radar or by a trained spotter/law enforcement who is watching the storm. “

## DISASTER EDUCATION WEBSITES:

**Baldwin County Emergency Management Agency (BCEMA)** - [www.baldwincountyal.gov/ema](http://www.baldwincountyal.gov/ema)

**Federal Emergency Management Agency (FEMA)** - [www.fema.gov](http://www.fema.gov)

**Alabama Emergency Management Agency (AEMA)** - [www.ema.alabama.gov](http://www.ema.alabama.gov)

**Be Ready Campaign** - [www.ready.gov](http://www.ready.gov)

**Agency for Toxic Substance and Disease Registry** - [www.atsdr.cdc.gov](http://www.atsdr.cdc.gov)

**Centers for Disease Control and Prevention** - [www.cdc.gov/disasters](http://www.cdc.gov/disasters)

**Citizen Corps** - [www.citizencorps.gov](http://www.citizencorps.gov)

**Department of Commerce** - [www.doc.gov](http://www.doc.gov)

**Department of Education** - [www.ed.gov](http://www.ed.gov)

**Baldwin County Board of Education** - [www.bcbe.org/](http://www.bcbe.org/)

**Department of Energy** - [www.energy.gov](http://www.energy.gov)

**Department of Health and Human Services** - [www.hhs.gov/disasters](http://www.hhs.gov/disasters)

**Department of Homeland Security** - [www.dhs.gov](http://www.dhs.gov)

**Alabama Department of Homeland Security** - [www.alea.gov/office-of-the-secretary/homeland-security](http://www.alea.gov/office-of-the-secretary/homeland-security)

**National Fire Protection Association** - [www.nfpa.org](http://www.nfpa.org)

**National Oceanic and Atmospheric Administration (NOAA)** - [noaa.gov](http://noaa.gov) and

**National Weather Service of Mobile (NWS)** - [weather.gov/mob/](http://weather.gov/mob/)

## Gulf Shores Utilities

**HURRICANE PREPAREDNESS INFORMATION WEBSITE:**

<https://www.gulfshoresutilities.com/emergency-preparedness/>

*1629 E 1st Street, Gulf Shores, AL 36542*

*251-968-6323*

*24 Hour Emergencies*

**HELLMICH ELECTRIC, INC.**  
Since 1986

State License #1001

**Commercial & Residential**

**All Work Guaranteed  
Free Estimates**



**Gary & Beth Hellmich, Owners**  
903 West Laurel Ave., Foley, AL 36535

**251-943-2350**  
[gary@hellmichelectric.com](mailto:gary@hellmichelectric.com)



**Parker Kennels has been here for 25 yrs, during those 25yrs we have witnessed several hurricanes across the Gulf Coast. We are not only here for our locals but all who are affected. We strive to give you a peace of mind that your pets are safe and being well taken care of while you handle everything else. The owner Ronnie Parker is a volunteer firefighter and can get here quickly as well as some of the employees that live close. Out of the 25 yrs we have been blessed with no major damage, when Ronnie built the place he built it well and took extra measures to make it a safe place. We hope none of the Gulf Coast is affected by a storm but just know if we are we are here to serve you with a safe place for your pets.**

**251-970-3647  
Monday - Friday 7am-5pm  
Saturday & Sunday 7am-8am & 4pm-5pm**

# ARE YOU **SEVERE WEATHER READY?**

## BEFORE THE STORM:

- Check that your cleanout is properly sealed (if yours is visible)
- Bathe, wash dishes, wash clothes
- Read and save/print all suggestions and troubleshooting tips on our Severe Weather Tips site in case you don't have internet and phone service after the storm

## DURING & AFTER STORM:

- When power is out in the area or your pump is turned off, limit water usage in home/building as much as possible
- Reference recommendations from our Severe Weather Tips that pertain to you

Read detailed Severe Weather Tips at:  
[www.baldwincountysewer.com](http://www.baldwincountysewer.com)







Baldwin Regional Area Transit System, “BRATS,” is a department of the Baldwin County Commission. BRATS offers safe, affordable and reliable transportation to help enhance lives, promote a strong economy, protect our environment by reducing traffic congestion and conserve energy. Our transit operation consists of a fleet of over 40 ADA accessible buses. BRATS provides transportation throughout Baldwin County at a minimum mileage-based cost. Funding for BRATS is provided by the fares collected, the Baldwin County Commission and grants from the Federal Transit Administration. To schedule non-emergency transportation with BRATS, please call (251) 972 6817 or download the convenient mobile app, “BRATS On Demand.”

Transportation plays a vital role in emergency response in Baldwin County, and BRATS is an active partner with the Baldwin County Emergency Management Agency. Our partnership supports the needs of our community by assisting with mass transit evacuations resulting from natural disasters, fires, vehicle accidents, chemical spills, etc. This alliance and properly executed emergency plans aid in lowering the significant risk of loss of life among those dependent on mass transit for evacuation to escape harm’s way.

Public transit provides many with increased independence and provides greater access to our community. We believe in “Connecting Communities,” so if you have a transportation need, please contact BRATS today!

**Ann Simpson,  
Director of Transportation**

**(251) 972-6817**  
**[www.ridebrats.com](http://www.ridebrats.com)**

# LOCAL RESOURCES

## AREA TELEVISION STATIONS

Channel 3 (ABC) WEAR TV  
Channel 5 (CBS) WKRG TV  
Channel 10 (NBC) WALA TV  
Channel 15 (FOX) WPMT TV  
Channel 35 WFGX TV  
Channel 44 WJTC TV

## AREA RADIO STATIONS

WABB AM 1480  
WABB FM 97.5  
WABF AM 1480  
WQUA FM 102.1  
WAVH FM 106.5  
WBCA AM 1110  
WBHY AM 840  
WBHY FM 88.5  
WBLX FM 92.5  
WCSN FM 105.7  
WDLT FM 98.3  
WDLT AM 600  
WBUB FM 104.1  
WMXC FM 99.9  
WRKH FM 96.1  
WGOK AM 900  
WHEP AM 1310  
WHIL FM 91.3  
WJLQ FM 100.7  
WJLQ FM 100.7  
WNTM AM 710

WNXP FM 105.5  
WKSJ FM 94.9  
WPCS FM 89.3  
WUWF FM 91  
WXBW FM 102.5  
WZEW FM 92.1  
WTKK FM 101.5  
WXWY AM 100  
WMOB AM 1360

## BALDWIN COUNTY EVACUATION SHELTERS

### MASS CARE SHELTERS (GENERAL PUBLIC):

Baldwin County Coliseum  
19477 Fairground Road  
Robertsdale, AL 36567

### BAY MINETTE MIDDLE SCHOOL

1311 West 13th St.  
Bay Minette, AL 36507

### DAPHNE EAST ELEMENTARY

26651 County Road 13  
Daphne, AL 26526

## MEDICAL NEEDS SHELTER:

Baldwin County Coliseum  
19477 Fairground Road  
Robertsdale, AL 36567

## ELECTRICAL SUPPORT SHELTERS:

Baldwin County Coliseum  
19477 Fairground Road  
Robertsdale, AL 36567

Baldwin County Level II  
Community Shelter  
207 North White Ave.  
Bay Minette, AL 36507

Fairhope Satellite Courthouse  
1100 Fairhope Ave.  
Fairhope, AL 36532

Foley Satellite Courthouse  
201 East Section Ave.  
Foley, AL 36535

## OTHER CONTACT INFORMATION:

### BALDWIN COUNTY EMERGENCY MANAGEMENT AGENCY

251-972-6807  
BCEMA.BaldwinCountyAL.gov  
www.BaldwinCountyAL.gov/  
EMA

## BALDWIN COUNTY SHERIFF'S OFFICE

251-937-0202  
251-972-6802

## BALDWIN REGIONAL AREA TRANSPORTATION SYSTEM

Baldwin Regional Area Transit Systems (BRATS) offers safe, affordable, and reliable transportation to residents and visitors throughout Baldwin County. BRATS provides door-to-door public transit for medical appointments, job access, retail shopping, etc. Riding BRATS is easier than ever with the new smart phone app. Download the "BRATS On Demand" app at the Google or Apple stores or schedule a ride through your web browser at <https://brats.app.ridewithvia.com>. For more information on our services, visit the BRATS website at [www.bratsondemand.com](http://www.bratsondemand.com). P.O. Box 907, Robertsdale, AL 36567  
Office Hours: Monday through Friday, 7:00 a.m. – 4:30 p.m.  
251-972-6817

# UTILITIES

## ALABAMA POWER

Provides electric service to surrounding areas  
800-888-2726  
CustomerService.Southern-Company.com

## BALDWIN COUNTY SEWER SERVICE

251-971-3022

## BALDWIN EMC

Provides electric for all of Gulf Shores and Orange Beach; most unincorporated areas  
251-989-6247; 800-837-3374  
BaldwinEMC.com

## EAST CENTRAL BALDWIN WATER AUTHORITY

East Central Baldwin County water, sewer and fire protection authority.  
251-942-1242

## NORTH BALDWIN UTILITIES

Natural gas, water and waste water.  
251-580-1626  
NorthBaldwinUtilities.com

## PERDIDO BAY WATER

Provides water, sewer and fire for Lillian, Perdido Beach, Josephine and Elberta.  
251-987-5816  
PerdidoBayWater.com

## RIVIERA UTILITIES

The electric department provides service for Daphne, Spanish Fort, Point Clear, Loxley, Silverhill, Summerdale, Foley, Elberta, Lillian, Bon Secour and Magnolia Springs.

The gas department directly serves customers in Foley, Magnolia Springs, Summerdale, Elberta, Miflin, Gulf Shores and Silverhill. Additionally, Riviera supplies wholesale natural gas to the municipalities of Loxley, Robertsdale and Clark / Mobile counties gas district in Orange Beach.

Provides water service to households in South Baldwin County.  
Provides waste water service to city of Foley only.  
251-943-5001 Eastern Division  
Foley  
251-626-5000 Western Division  
Daphne  
RivieraUtilities.com

## WHITE HOUSE WATER AUTHORITY

Water authority to White House Fork areas.  
251-937-2430

# MUNICIPALITIES

## DAPHNE UTILITIES

Water, sewer and natural gas.  
251-626-2628  
DaphneUtilities.com

## FAIRHOPE UTILITIES

Set up new service for water, sewer, natural gas, electric and sanitation.  
251-990-0121  
COFairhope.com

## GULF SHORES UTILITIES

Water and sewer.  
251-968-6323

## LOXLEY UTILITIES

Water, waste water, gas, solid waste, streets, animal control, mosquito control, grass and drainage maintenance.  
251-964-7644

## ROBERTSDALE UTILITIES

Electric, sewer, water, natural gas and sanitation.

251-947-8950  
Robertsdale.org

## SUMMERDALE WATER

251-989-6470

## SUMMERDALE SEWER

251-989-2437  
SummerdaleAlabama.com

## OTHER INFORMATION PERTAINING TO UTILITIES

ALABAMA 1: 811 ALL  
BALDWIN COUNTY  
800-972-2631  
ALICall.com

## UTILITIES OVERVIEW WEBSITE

BaldwinEDA.com

# ELECTED OFFICIALS

## BALDWIN COUNTY COURTHOUSE

312 Courthouse Square, Suite 22, Bay Minette, AL 36507.

## CIRCUIT COURT JUDGES

This circuit comprises the geographical limits of Baldwin County and is composed of five circuit court judges, two district court judges, one circuit clerk and one district attorney. The Circuit Court hears all civil matters where the amount in controversy exceeds \$10,000, all criminal prosecutions involving felony offenses and family court matters. The Circuit Court has concurrent jurisdiction with the District Court and in all civil matters where the amount in controversy exceeds \$3,000 but does not exceed \$10,000, exclusive of interest and costs. Additionally, the Circuit Courts exercise appellate jurisdiction over cases appealed from the District Courts, Probate Court, Baldwin County Municipal Courts and certain administrative and municipal boards.

## SEVENTH JUDICIAL DISTRICT CIRCUIT

**HONORABLE J. CLARK STANKOSKI**  
Presiding Circuit Judge  
251-937-0237

**HONORABLE SCOTT P. TAYLOR**  
Circuit Judge  
251-580-2570

**HONORABLE CARMEN E. BOSCH**  
Circuit Judge  
251-937-0235

**HONORABLE JODY W. BISHOP**  
Circuit Judge  
251-937-0290

**HONORABLE C. JOSEPH NORTON**  
Circuit Judge  
251-937-0273

## DISTRICT JUDGES

The District Court has original jurisdiction over criminal misdemeanors, holds preliminary hearings in felony prosecutions and can receive guilty pleas in felony cases not punishable by death. The two district judges exercise concurrent jurisdiction with the Circuit Courts in juvenile matters and in civil actions where the amount in controversy does not exceed \$10,000; furthermore, the district judges have exclusive jurisdiction over all

civil actions where the amount in controversy, exclusive of interest and costs, does not exceed \$3,000, which are considered "small claims cases."

**MICHELLE M. THOMASON**  
Presiding Judge Courtroom #7  
251-972-8573  
251-972-6815 (Fax)

**WILLIAM E. SCULLY JR.**  
251-580-1647

## CIRCUIT CLERK

The Circuit Clerk serves as the chief administrative and fiscal officer for the court system. Also serves as an election official for the county and has magistrate duties, working with law enforcement for the issuance of warrants and for the filing of court documents.

**BRENDA GANEY**  
312 Courthouse Square, Suite 10  
Bay Minette, Alabama 36507  
brenda.ganey@alacourt.gov

## DISTRICT ATTORNEY

**ROBERT WILTERS**  
Elected 2016  
Administrative Office  
101 Hand Ave.  
Bay Minette, AL 36507  
251-937-0274  
BaldwinDA@baldwincountyal.gov

## FEDERAL AND STATE REPRESENTATIVES

**U.S. SEN TOMMY TUBERVILLE**  
United States Senator Tommy Tuberville was elected to the U.S. Senate in 2020 and is currently serving his first term representing Alabama. His constituents still know him as Coach Tuberville, following his 40-year career coaching college football. Sen. Tuberville serves on the Committee on Agriculture, Nutrition and Forestry, the Committee on Armed Services, The Committee on Health, Education, Labor and Pensions and the Committee on Veterans' Affairs.

**MOBILE OFFICE:**  
BB& T Centre 41 West I-65, Service Road North, Suite 2300-A  
Mobile, AL 36608  
Phone 251-414-3083

**WASHINGTON D.C. OFFICE:**  
142 Russell Senate Office Building  
Washington DC 20510  
202-224-4124

## U.S. SENATE KATIE BRITT

Elected to the Senate in 1986. Sen. Shelby serves as the chairman of the Committee on Banking, Housing and Urban Affairs and is a member of the Committee on Appropriations as well as the Committee on Rules and Administration.

**MOBILE OFFICE:**  
113 St. Joseph St.  
445 U.S. Federal Courthouse  
Mobile, AL 36602  
Phone: 251-694-4164 · Fax: 251-694-4166

**WASHINGTON, D.C. OFFICE:**  
304 Russell Senate Office Building  
Washington, D.C. 20510  
Phone: 202-224-5744 · Fax: 202-224-3416 · Website: Shelby.Senate.gov

**U.S. REP. JERRY CARL**  
Alabama's First District  
Elected in 2020. He sits on the House Armed Services Committee and the House Committee on Natural Resources. Website: Carl.House.gov

**BALDWIN COUNTY OFFICE:**  
502 W. Lee Ave.  
Summerdale, AL 36580  
Phone: 251-989-2664

**WASHINGTON D.C. OFFICE:**  
119 Cannon House Office Building  
Washington, D.C. 20515  
Phone: 202-225-4931 · Fax: 202-225-0562 · Website: Byrne.House.gov

**BALDWIN COUNTY LEGISLATIVE CONSTITUENT SERVICES OFFICE DIRECTOR, CLIFF MCCOLLUM**  
cliff.mccollum@baldwincountyal.gov  
1100 Fairhope Ave.  
Fairhope, AL 36532  
251-990-4615

**STATE SEN. CHRIS ELLIOTT**  
(R) - State Senate District No. 32  
Elected to the State Senate in 2018  
Represents all or a portion of the incorporated Baldwin municipalities of Daphne, Elberta, Fairhope, Foley, Gulf Shores, Loxley, Magnolia Springs, Orange Beach, Perdido Beach, Robertsedale, Silverhill, Spanish Fort and Summerdale; the unincorporated communities of Elsanor, Seminole, Belforest, Marlow, Point Clear, Barnwell, Lillian, Josephine, Mifflin, Bon Secour, Fort Morgan and Ono Island. Alabama State Senate, Room 738-B  
1100 Fairhope Avenue  
Fairhope, AL 36532  
334-261-0897 · celliott@baldwincountyal.gov

**STATE SEN. GREG ALBRITTON**  
(R) - State Senate District No. 22  
Elected to the State Senate in 2014  
Represents all or a portion of the incorporated municipalities of Bay Minette, Loxley and Robertsedale and the unin-

corporated communities of Little River, Blacksher, Tensaw, Lottie, Latham, Vaughn, Stockton, Crossroads, Bromley, Malbis, Stapleton, Plantation Hills, Ellisville and Belforest.

Alabama State Senate, Room 721  
203 Oak St.  
Bay Minette, AL 36507  
334-261-0843  
galbritton@baldwincountyal.gov

#### **STATE REP. ALAN BAKER**

(R) - State House District No. 66  
Elected to the House in 2006  
Represents the incorporated municipality of Loxley; the unincorporated communities of Perdido, Phillippsville, Pine Grove, Gateswood, Clear Springs, Loxley-Ellisville and Stapleton.

Alabama House of Representatives,  
Room 427-B  
203 Oak Street  
Bay Minette, AL 36507  
334-261-0420  
StateRep@co.escambia.al.us

#### **STATE REP. JENNIFER FIDDLER**

(R) - State House District No. 94  
Elected to the House in 2002  
Represents all or a portion of the incorporated municipalities of Fairhope, Robertsdale and Silverhill; the unincorporated communities of Malbis, Belforest, Plantation Hills, Point Clear, Barnwell, Marlow, Elsanor, Rosinton, Seminole and Lillian.

Alabama House of Representatives,  
Room 426  
1100 Fairhope Avenue.  
Fairhope, AL 36532  
334-261-0409  
JFaust@baldwincountyal.gov

#### **STATE REP. FRANCES HOLK-JONES**

(R) - State House District No. 95  
Elected to the House in 1980  
Represents the incorporated municipalities of Elberta, Foley, Gulf Shores, Magnolia Springs, Orange Beach, Perdido Beach, Robertsdale and Summerdale; the unincorporated communities of Barnwell, Lillian, Josephine, Mifflin, Bon Secour, Fort Morgan and Ono Island.

Alabama House of Representatives,  
Room 532  
11 S. Union St.  
Montgomery, AL 36130  
334-261-0523

#### **STATE REP. DONNA GIVENS**

(R) - State House District No. 64  
Elected to the House in 2006  
Represents all or a portion of the incorporated municipality of Bay Minette; the unincorporated communities of Little River, Blacksher, Lottie, Tensaw, Rabun, Latham, Vaughn, Stockton, Crossroads, Whitehouse Fork and Bromley.

Alabama House of Representatives,  
Room 526-D  
11 S. Union St.  
Montgomery, AL 36130  
334-261-0445  
HarryShiver@aol.com

#### **STATE REP. MATT SIMPSON**

(R) - State House District No. 96  
Elected to the House in 2018  
Represents all or a portion of the incorporated communities of Daphne and Spanish Fort; the unincorporated communities of Bromley, Stapleton and Malbis.

Alabama House of Representatives,  
Room 417-G  
1100 Fairhope Avenue  
Fairhope, AL 36532  
334-261-0424  
MattSimpsonAL96@gmail.com

## **BALDWIN COUNTY OFFICIALS**

*Baldwin County Commission*  
([baldwincountyal.gov](mailto:baldwincountyal.gov))

#### **BALDWIN COUNTY COMMISSIONER HONORABLE JAMES E. (JEB) BALL**

(R) - District No. 1 -  
North Baldwin County  
First elected in 2018  
Municipality: City of Bay Minette  
Communities: Little River, Blacksher, Latham, Vaughn, Stockton, Redtown, Lotie, Rabun, Perdido, Carpenter, Blakeley, Bromley, Cottage Hill, Pine Grove, Whitehouse Fork, Crossroads, Dyas, Phillippsville, Vangordon, Stapleton and Steelwood  
Baldwin County - Administration Building  
312 Courthouse Square, Suite 12  
Bay Minette, AL 36507  
Phone: 251-937-0330  
Administrative Staff: Barbara Pate  
Email: [barbara.pate@baldwincountyal.gov](mailto:barbara.pate@baldwincountyal.gov)

#### **HONORABLE MATTHEW P. MCKENZIE**

(R) District No. 2 – Eastern Shore  
Elected 2022  
Municipalities: City of Spanish Fort, City of Daphne and City of Fairhope  
Communities: Belforest, Historic Marlow, Fish River, Barnwell, Battles Wharf, Point Clear and Montrose  
Baldwin County (Fairhope) Satellite Courthouse  
1100 Fairhope Avenue  
Fairhope, AL 36532  
Phone: 251-990-4620 Ext. 4620  
Auxiliary Office: Baldwin County Administration Building (County Seat)  
312 Courthouse Square, Suite 12  
Bay Minette, AL 36507  
Phone: 251-937-9561  
Administrative Staff: Michelle Howard  
Phone 251-990-4606 Ext. 4606, 2601  
Email: [Michelle.Howard@baldwincountyal.gov](mailto:Michelle.Howard@baldwincountyal.gov)

#### **HONORABLE BILLIE JO UNDERWOOD**

(R) - District No. 3 - Central Baldwin County  
First Elected in 2018  
Municipalities: Town City of Loxley, City of Robertsdale, Town of Silverhill and Town of Summerdale  
Communities: Gateswood, Clear Springs, Rosinton, Elsa-

nor and Seminole  
Baldwin County - Central Annex  
22251 Palmer St.  
Robertsdale, AL 36567  
Phone: 251-972-8515  
Auxiliary Office: Baldwin County Administration Building  
312 Courthouse Square, Suite 12  
Bay Minette, AL 36507  
Administrative Staff: Tiffany Givens  
[Tiffany.Givens@baldwincountyal.gov](mailto:Tiffany.Givens@baldwincountyal.gov)

#### **HONORABLE CHARLES F. (SKIP) GRUBER**

(R) - District No. 4 - South Baldwin County  
First Elected 2006  
Municipalities: City of Foley, Town of Elberta,  
City of Gulf Shores, Town of Magnolia Springs, City of Orange Beach and Town of Perdido Beach  
Communities: Historic Marlow, Fish River, Bon Secour, Oyster Bay, Mifflin, Josephine, Ono Island, Fort Morgan and Lillian  
Baldwin County Commission (Foley) Satellite Courthouse  
201 E. Section Ave.  
Foley, AL 36535  
Phone: 251-972-6833, Ext. 2804  
Auxiliary Office: Baldwin County Administration Building  
312 Courthouse Square, Suite 12  
Bay Minette, AL 36507  
Administrative Staff:  
Jeannie Peerson  
Phone: 251-937-0264, 251-972-6833, ext. 2801  
Email: [jpeerson@baldwincountyal.gov](mailto:jpeerson@baldwincountyal.gov)

#### **BALDWIN COUNTY SHERIFF HUEY "HOSS" MACK**

The sheriff's office is the principal law enforcement agency for Baldwin County. The sheriff serves as an officer of the courts and is responsible for service of court papers and documents. He also maintains the Baldwin County Corrections Center which houses up to 649 inmates.  
Non-Emergencies: 251-937-0202 or 251-972-6802  
Telecommunications Device for the Deaf: 251-580-2516

#### **BALDWIN COUNTY CORONER BRIAN PIERCE**

Elected in 2018  
Phone: 251-970-4051  
Email: [brian.pierce@baldwincountyal.gov](mailto:brian.pierce@baldwincountyal.gov)  
The coroner is responsible for the determination of the cause and manner of death of a person who dies and is not under medical care.  
All traumatic deaths, such as murder, suicide, accidental, motor vehicle and drowning are required by law to be reported to the coroner. Any person who may have died of natural causes, but was not under a doctor's care, by law, must also be reported to the coroner's office. It is the final responsibility of the coroner to execute and file a Certificate of Death with the Baldwin County Health Department (251-947-3618). The coroner

# ORANGE BEACH SCHOOL SYSTEM

## ORANGE BEACH ELEMENTARY

4900 Wilson Blvd.  
251-981-5662

## ORANGE BEACH MIDDLE & HIGH SCHOOL

4900 Wilson Blvd., Orange Beach  
251-967-5306  
Bcbe.org/OBHS

# GULF SHORES CITY SCHOOLS

## GULF SHORES BOARD OF EDUCATION

300 East 16th Ave., Gulf Shores  
251-968-9873  
Gsboe.org

## GULF SHORES ELEMENTARY SCHOOL (K-5)

1600 East 3rd Ave., Gulf Shores  
251-968-7375  
Gsboe.org/GSES

## GULF SHORES MIDDLE SCHOOL (6-8)

450 East 15th Ave., Gulf Shores  
251-968-8719  
Gsboe.org/GSMS

## GULF SHORES HIGH SCHOOL (9-12)

600 East 15th Ave., Gulf Shores  
251-968-4747  
Gsboe.org/GSHS

# HOSPITALS

## NORTH BALDWIN INFIRMARY

(251) 937-5521

## SOUTH BALDWIN REGIONAL MEDICAL CENTER

(251) 949-3400

## SOUTH BALDWIN REGIONAL MEDICAL CENTER FREE-STANDING EMERGENCY DEPARTMENT

(251) 215-4853

## THOMAS HOSPITAL

(251) 928-2375

## THOMAS FREESTANDING EMERGENCY DEPARTMENT - MALBIS

(251) 279-5423

must also review and certify all persons who desire to be cremated at the time of their death. In order to determine the cause and manner of death, the coroner may request an autopsy be conducted by the Alabama Department of Forensic Sciences located in Mobile; 251-471-7026 [adfs.alabama.gov](http://adfs.alabama.gov).

## PROBATE JUDGE HARRY D'OLIVE JR.

The Probate Judge in Baldwin County is a publicly elected representative of the people for the administration of the Probate Court, License Office and the "Recorder's" Office — for official public recordation of documents.

## MAIN OFFICE:

220 Courthouse Square  
Bay Minette, AL 36507  
Phone: 251-580-2596

## SATELLITE OFFICES:

22251 Palmer St., Robertsdale, AL 36567  
Phone: 251-943-5061  
1102 Fairhope Ave., Fairhope, AL 36532  
Phone: 251-928-3002  
201 E. Section Ave., Foley, AL 36535  
Phone: 251-943-5061

## BALDWIN COUNTY REVENUE COMMISSIONER TEDDY J. FAUST JR.

Elected 2009

The Revenue Commissioner's Office is responsible for mapping, appraising and assessing each parcel of property, and then collecting tax based upon each parcel's assessed value. These property taxes support the state of Alabama, Baldwin County, Baldwin County public schools, hospitals, law enforcement, fire departments and municipalities.

Main Office:

1705 U.S. Highway 31 S.  
Bay Minette, AL 36507  
Phone: 251-937-0245

Email: [tfaust@baldwincountyal.gov](mailto:tfaust@baldwincountyal.gov)

# COUNTY ADMINISTRATION

## COUNTY ADMINISTRATOR/BUDGET DIRECTOR

### ROGER RENDLEMAN

Email: [roger.rendleman@baldwincountyal.gov](mailto:roger.rendleman@baldwincountyal.gov)

### COUNTY ENGINEER

#### FRANK LUNDY

Email: [Flundy@baldwincountyal.gov](mailto:Flundy@baldwincountyal.gov)

# MEDIA INQUIRIES

If you are a news media professional with a question for the Baldwin County Commission please submit your request using the form below. Please include as much information as possible with your request. All requests will be considered in the order received.

This Media request form is dedicated to responding to requests from credentialed journalists. If this is a non-media inquiry please reach out to our Citizen Service Center. You can reach them by phone at 251.937.9561 · 251.928.3002 · 251.943.5061

<https://baldwincountyal.gov/departments/county-administration/media-request>

# BALDWIN COUNTY CHAMBERS OF COMMERCE

## NORTH BALDWIN CHAMBER

301 McMeans Ave.  
Bay Minette, AL 36507  
(251) 937-5665

## CENTRAL BALDWIN CHAMBER

23150 Hwy 59  
Robertsdale, AL 36567  
(251) 947-2626

## SOUTH BALDWIN CHAMBER

112 West Laurel Ave.  
Foley, AL 36535  
(251) 943-3291

## EASTERN SHORE CHAMBER

327 Fairhope Ave.  
Fairhope, AL 36532  
(251) 928-6387

## COASTAL AL BUSINESS CHAMBER

3150 Gulf Shores Parkway  
Gulf Shores, AL 36547  
(251) 968-7200

# BALDWIN COUNTY PUBLIC SCHOOLS

## DISTRICT 1

### **BALDWIN COUNTY HIGH (9-12)**

1 Tiger Drive, Bay Minette  
251-937-2341  
Bcbe.org/BCHS

### **BALDWIN COUNTY VIRTUAL ELEMENTARY / MIDDLE SCHOOL**

605 US 98, Daphne  
251-404-6209  
Bcbe.org

### **BALDWIN COUNTY VIRTUAL HIGH SCHOOL**

605 US 98, Daphne  
251-404-6209  
Bcbe.org

### **BAY MINETTE ELEMENTARY (K-6)**

400 E. 9th St., Bay Minette  
251-937-7651  
Bcbe.org/BME

### **BAY MINETTE MIDDLE (7-8)**

1311 W. 13th St., Bay Minette  
251-580-2960  
Bcbe.org/BMMS

### **DELTA ELEMENTARY (K-6)**

10251 Whitehouse Fork Road Extension, Bay Minette  
251-937-3657  
Bcbe.org/Delta

### **NORTH BALDWIN CENTER FOR TECHNOLOGY (9-12)**

505 W. Hurricane Road, Bay Minette  
251-937-6751  
Bcbe.org/NBCT

### **PERDIDO SCHOOL (K-8)**

23589 County Road 47, Perdido  
251-937-8456  
Bcbe.org/Perdido

### **PINE GROVE ELEMENTARY (K-6)**

43980 Pine Grove Road, Bay Minette  
251-937-0453  
Bcbe.org/PineGrove

### **STAPLETON ELEMENTARY (K-6)**

35480 Harriot Ave., Stapleton  
251-937-2038  
Bcbe.org/Stapleton

## DISTRICT 2

### **BELFOREST ELEMENTARY**

11364 County Road 64, Daphne  
Bcbe.org/belforest

### **DAPHNE EAST ELEMENTARY (K-6)**

26651 County Road 13, Daphne  
251-626-1663  
Bcbe.org/DEE

### **DAPHNE ELEMENTARY (K-3)**

2307 Main St., Daphne  
251-626-2424  
Bcbe.org/DE

### **DAPHNE HIGH (9-12)**

9300 Champions Way, Daphne  
251-626-8787  
Bcbe.org/DHS

### **DAPHNE MIDDLE (7-8)**

1 Jody Davis Circle, Daphne  
251-626-2845  
Bcbe.org/DMS

### **W.J. CARROLL INTERMEDIATE (4-6)**

1000 Main St., Daphne  
251-626-0277  
Bcbe.org/Carroll

## DISTRICT 3

### **C. F. TAYLOR ALTERNATIVE SCHOOL**

19150 Wilters St., Robertsdale  
251-970-4415

### **CENTRAL BALDWIN MIDDLE SCHOOL (7-8)**

24545 Highway 59, Robertsdale  
251-947-2327  
Bcbe.org/CBMS

### **ELSANOR ELEMENTARY (K-6)**

23440 U.S. Highway 90, Robertsdale  
251-947-5401  
Bcbe.org/Elsanor

### **LOXLEY ELEMENTARY (K-6)**

4999 S. Magnolia St., Loxley  
251-964-5334  
Bcbe.org/LoxleyElem

### **ROBERTSDALE ELEMENTARY (K-6)**

1 Cub Drive, Robertsdale  
251-947-4003  
Bcbe.org/RobertsdaleElem

### **ROBERTSDALE HIGH (9-12)**

1 Golden Bear Drive, Robertsdale  
251-947-4154  
Bcbe.org/RHS

### **ROSINTON ELEMENTARY (K-6)**

19757 County Road 64, Robertsdale  
251-964-5210  
Bcbe.org/Rosinton

### **SOUTH BALDWIN CENTER FOR TECHNOLOGY (9-12)**

19200 Carolina St., Robertsdale  
251-947-5041  
Bcbe.org/SBCT

### **SILVERHILL ELEMENTARY (K-6)**

15800 Fourth Ave., Silverhill  
251-945-5188  
Bcbe.org/Silverhill

## DISTRICT 4

### **FLORENCE B. MATHIS ELEMENTARY (K-6)**

600 Ninth Ave., Foley  
251-943-1244  
Bcbe.org/MathisElementary

### **FOLEY ELEMENTARY (K-6)**

450 N. Cedar St., Foley  
251-943-8861  
Bcbe.org/FoleyElem

### **FOLEY HIGH (9-12)**

1 Pride Place, Foley  
251-943-2221  
Bcbe.org/Foley

### **FOLEY MIDDLE (7-8)**

200 N. Oak St., Foley  
251-943-1255  
Bcbe.org/FoleyMS

### **MAGNOLIA SCHOOL (K-6)**

1 Jaguar Loop, Foley  
251-965-6200  
Bcbe.org/Magnolia

### **SUMMERDALE SCHOOL (K-8)**

400 E. Broadway St., Summerdale  
251-989-6850  
Bcbe.org/Summerdale

### **SWIFT CONSOLIDATED (K-6)**

6330 Bon Secour Highway, Bon Secour  
251-949-6422  
Bcbe.org/Swift

## DISTRICT 5

### **ELBERTA ELEMENTARY (K-6)**

25820 U.S. Highway 98, Elberta  
251-986-5888  
Bcbe.org/Elberta

### **ELBERTA HIGH (9-12)**

13355 Main St., Elberta  
251-968-8127  
Bcbe.org/ElbertaHigh

### **ELBERTA MIDDLE (7-8)**

13355 Main St., Elberta  
251-986-8127  
Bcbe.org/EMS

## DISTRICT 6

### **FAIRHOPE EAST ELEMENTARY (K-6)**

20698 Bishop Road, Fairhope  
251-928-7841  
Bcbe.org/FairhopeEastElemen

### **FAIRHOPE HIGH (9-12)**

1 Pirate Drive, Fairhope  
251-928-8309  
Bcbe.org/FHS

### **FAIRHOPE MIDDLE (7-8)**

2 Pirate Drive, Fairhope  
251-928-2573  
Bcbe.org/FMS

### **FAIRHOPE WEST ELEMENTARY (K-6)**

408 N. Section St., Fairhope  
251-928-8400  
Bcbe.org/FairhopeWestElemen

### **J. LARRY NEWTON SCHOOL (K-6)**

9761 County Road 32, Fairhope  
251-990-3858  
Bcbe.org/Newton

## DISTRICT 7

### **ROCKWELL ELEMENTARY (K-5)**

10183 U.S. Highway 31, Spanish Fort  
251-626-5528  
Bcbe.org/Rockwell

### **SPANISH FORT ELEMENTARY (K-5)**

30900 Highway 225, Spanish Fort  
251-626-9751  
Bcbe.org/SpanishFortElem

### **SPANISH FORT HIGH (9-12)**

1 Plaza de Toros Drive, Spanish Fort  
251-625-3259  
Bcbe.org/SFHS

### **SPANISH FORT MIDDLE (6-8)**

33899 Jimmy Faulkner Drive, Spanish Fort  
251-625-3271  
Bcbe.org/SFMS

# Life Less Interrupted...

Receive a  
40 Gallon  
Water Heater  
When You  
Switch To  
Natural Gas

## WITH NATURAL GAS YOUR LIFE WILL BE LESS INTERRUPTED AFTER A HURRICANE...

You will still be able to cook with a gas range, gas outdoor grill and enjoy a hot shower with a natural gas water heater.



Gas Fireplaces



Coppersmith Gas Lanterns



Generac Generators



Call Us Today  
To Find Out About  
Switching To Natural Gas



Wilmington Grills

**CLARKE-MOBILE COUNTIES GAS DISTRICT**

24831 Canal Road • Post Office Box 3069 • Orange Beach, AL 36561

**251-974-5432**

**877-393-7547**

*Serving Orange Beach Alabama*

*America's vast underground gas pipeline infrastructure provides transportation of clean, energy efficient gas for homes, schools, hospitals, factories, mills, industries & power plants.*

**YOU LIVE IN  
BALDWIN COUNTY...**

**YOUR NEWS  
SHOULD, TOO**

50% Off All Subscriptions

[GulfCoastMedia.com/Subscribe](https://GulfCoastMedia.com/Subscribe)

Promo Code: BESTDEAL

**GULF AST MEDIA**