



# Baldwin County Regional Juvenile Detention Center

---

2021 ANNUAL REPORT

Ronald J. Ballard, Director  
BALDWIN COUNTY | ALABAMA

# 2021 ANNUAL REPORT

## Baldwin County Regional Juvenile Detention Center

---

### Table of Contents

History and Philosophy .....	2
Organizational Chart .....	3
Alleged Violations of Criminal Statutes .....	4
Admissions .....	7
Overview of Operations .....	11

## History and Philosophy

The Baldwin County Regional Juvenile Detention Center was created by an act of the legislature in 1990. The act authorized the Baldwin County Commission to construct and operate the facility. It also named the facility the Phyllis S. Nesbit Building after the first elected female juvenile judge of Baldwin County.

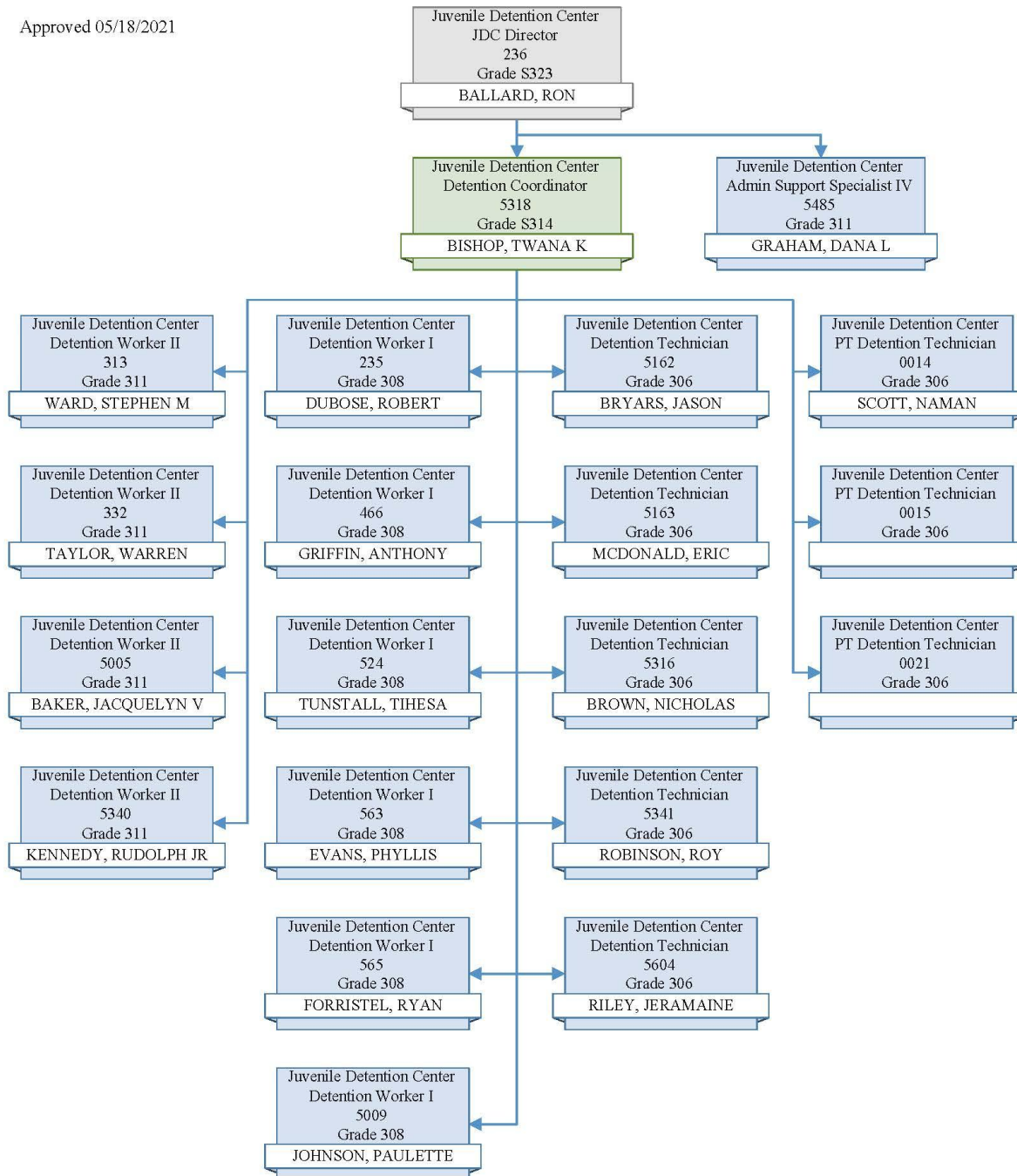
The construction of the building began in July of 1991 and was completed in April of 1992. The facility began operation on June 2, 1992.

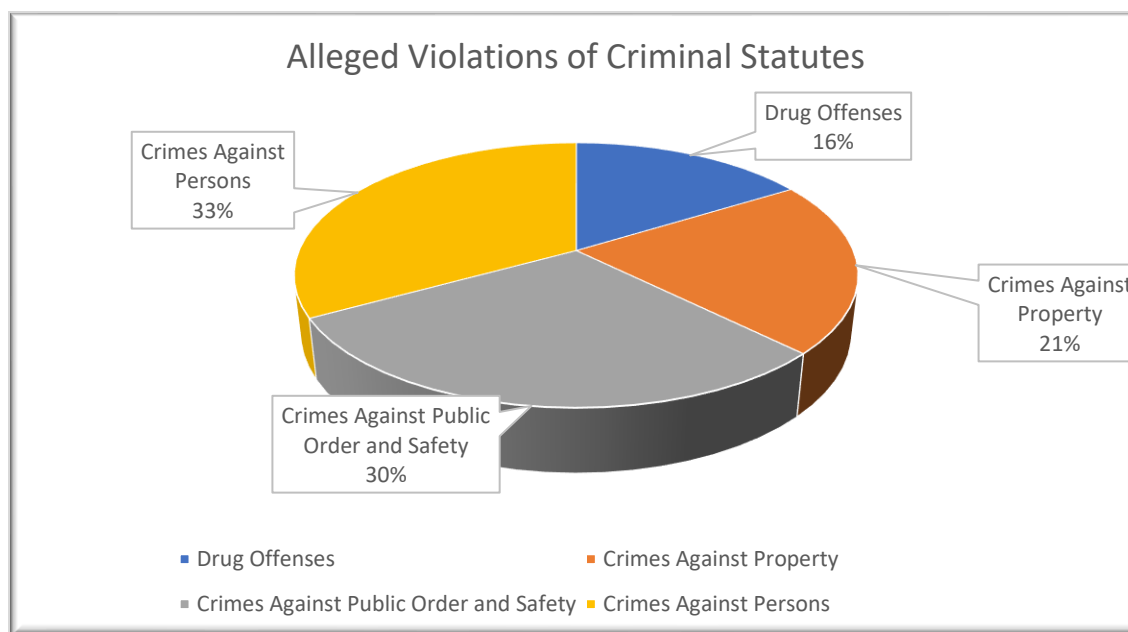
The legislature established the Alabama Department of Youth Services in September of 1973 with the responsibility of establishing minimum standards for juvenile detention facilities. The Department of Youth Services licensed the Baldwin County Regional Juvenile Detention Center in June of 1992. The facility acts as a regional facility and serves five other counties and their juveniles.

The purpose of the Baldwin County Regional Juvenile Detention Center is to provide temporary care of delinquent children or children alleged to be delinquent in secure custody pending court dispositions or transfer to a residential facility for further care of a child adjudicated to be delinquent.

## Organizational Chart

Approved 05/18/2021





Crimes Against Persons constituted the largest percentage of juveniles detained in 2021. Crimes Against Public Order and Safety was the second largest category constituting detained juveniles followed by Crimes Against Property and Drug Offenses. Males outnumbered females in all four subsections.

## Crimes Against Persons

Juveniles detained for allegedly committing offenses against other persons represented the largest percentage, thirty-three percent of the four subsections. Domestic Violence charges (60) represented the largest portion of the entries in this subsection totaling (116). Table 1 provides a list of the delinquencies for which juveniles were detained in this subsection.

**Table 1**

Crimes Against Persons	Male	Female	Total
Assault	14	5	19
Attempted Murder	0	0	0
Murder	0	0	0
Criminally Negligent Homicide	0	0	0
Domestic Violence	35	25	60
Harassment	6	6	12
Indecent Exposure	0	0	0
Intimidating a Witness	0	0	0
Menacing	3	3	6
Rape	5	0	5
Robbery	7	0	7
Sexual Abuse	3	0	3
Sexual Misconduct	1	0	1
Shooting into an Occupied Dwelling	1	0	1
Sodomy	2	0	2
<b>Total</b>	<b>77</b>	<b>39</b>	<b>116</b>

## Crimes Against Property

In 2021, Crimes Against Property represented twenty-one percent of the four subsections. Entries for males outnumbered those for females in this subsection. Criminal Mischief, Receiving Stolen Property and Theft of Property accounted for nearly three-fourths of the 68 total entries in this subsection. Table 2 provides the list of delinquencies for which juveniles were detained in this subsection.

**Table 2**

<b>Crimes Against Property</b>	<b>Male</b>	<b>Female</b>	<b>Total</b>
Arson	0	0	0
Breaking and Entering	6	1	7
Burglary	8	1	9
<b>Criminal Mischief</b>	<b>15</b>	<b>7</b>	<b>22</b>
Possession of Burglary Tools	0	0	0
<b>Receiving Stolen Property</b>	<b>12</b>	<b>2</b>	<b>16</b>
<b>Theft of Property</b>	<b>7</b>	<b>4</b>	<b>11</b>
Unauthorized Use of Motor Vehicle	4	1	5
<b>Total</b>	<b>52</b>	<b>16</b>	<b>68</b>

## Crimes Against Public Order and Safety

Juveniles detained for allegedly committing offenses against Public Order and Safety represented the second largest total, thirty percent of delinquencies allegedly committed by juveniles detained. Escape (30) represented the largest portion of the entries in this subsection totaling 95. Entries for males outnumbered those for females in this subsection. Table 3 provides the list of delinquencies for which juveniles were detained in this subsection.

**Table 3**

<b>Crimes Against Public Order and Safety</b>	<b>Male</b>	<b>Female</b>	<b>Total</b>
Animal Cruelty	0	0	0
Attempting to Elude	13	1	14
Carrying Concealed Weapon	2	0	2
Disseminating Obscene Material	0	0	0
Disorderly Conduct	19	4	23
D.U.I.	1	0	1
Escape	18	12	30
Giving False Info to Police	2	3	5
Making a Terrorist Threat	4	0	4
Obstructing Governmental Operations	2	3	5
Possession Forged Instrument	1	1	2
Public Intoxication	1	0	1
Reckless Endangerment	7	0	7
Resisting Arrest	10	3	13
Tampering with Evidence	0	0	0
Possession of a Firearm	17	1	18
<b>Total</b>	<b>80</b>	<b>15</b>	<b>95</b>

## Drug Offenses

Juveniles detained for committing Drug Offenses represented the lowest total, sixteen percent of the total delinquencies allegedly committed by juveniles detained. Possession of Marijuana (25) accounted for the majority of the 52 total entries in this subsection. Entries for males outnumbered those for females in this subsection. Table 4 provides the list of delinquencies for which juveniles were detained in this subsection.

**Table 4**

<b>Drug Offenses</b>	<b>Male</b>	<b>Female</b>	<b>Total</b>
Illegal possession of Prescription Drugs	1	0	1
Possession of Drug Paraphernalia	17	3	20
Possession of Marijuana	16	9	25
Unlawful possession/distribution of Controlled Substance	6	0	6
<b>Total</b>	<b>40</b>	<b>12</b>	<b>52</b>

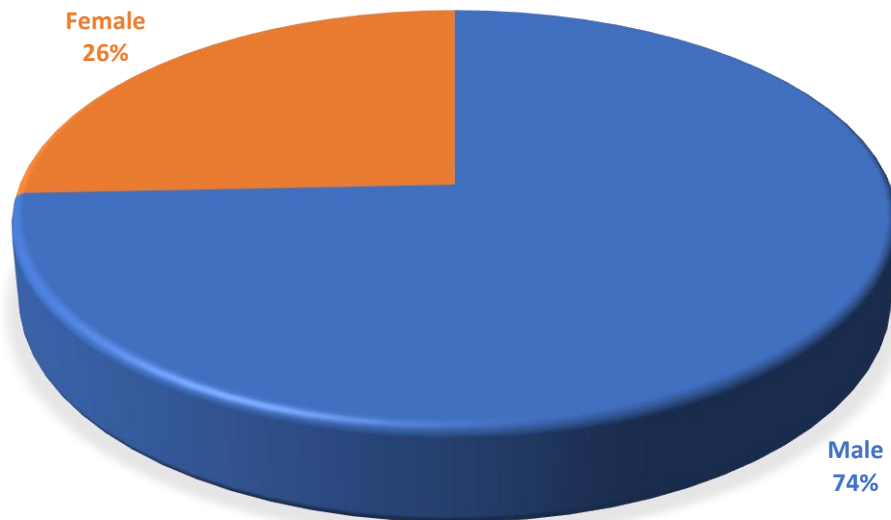
## Admissions

The Baldwin County Regional Juvenile Detention Center received a total of 256 admissions serving 7 counties: Baldwin, Choctaw, Clarke, Conecuh, Escambia, Monroe and Washington. Table 5 provides a list of male and female intakes denoting that of the 256 admissions, 188 were male and 68 were female.

**Table 5**

<b>Sex</b>	<b>Number of Admissions</b>
Male	188
Female	68
<b>Total</b>	<b>256</b>

### ADMISSIONS BY SEX



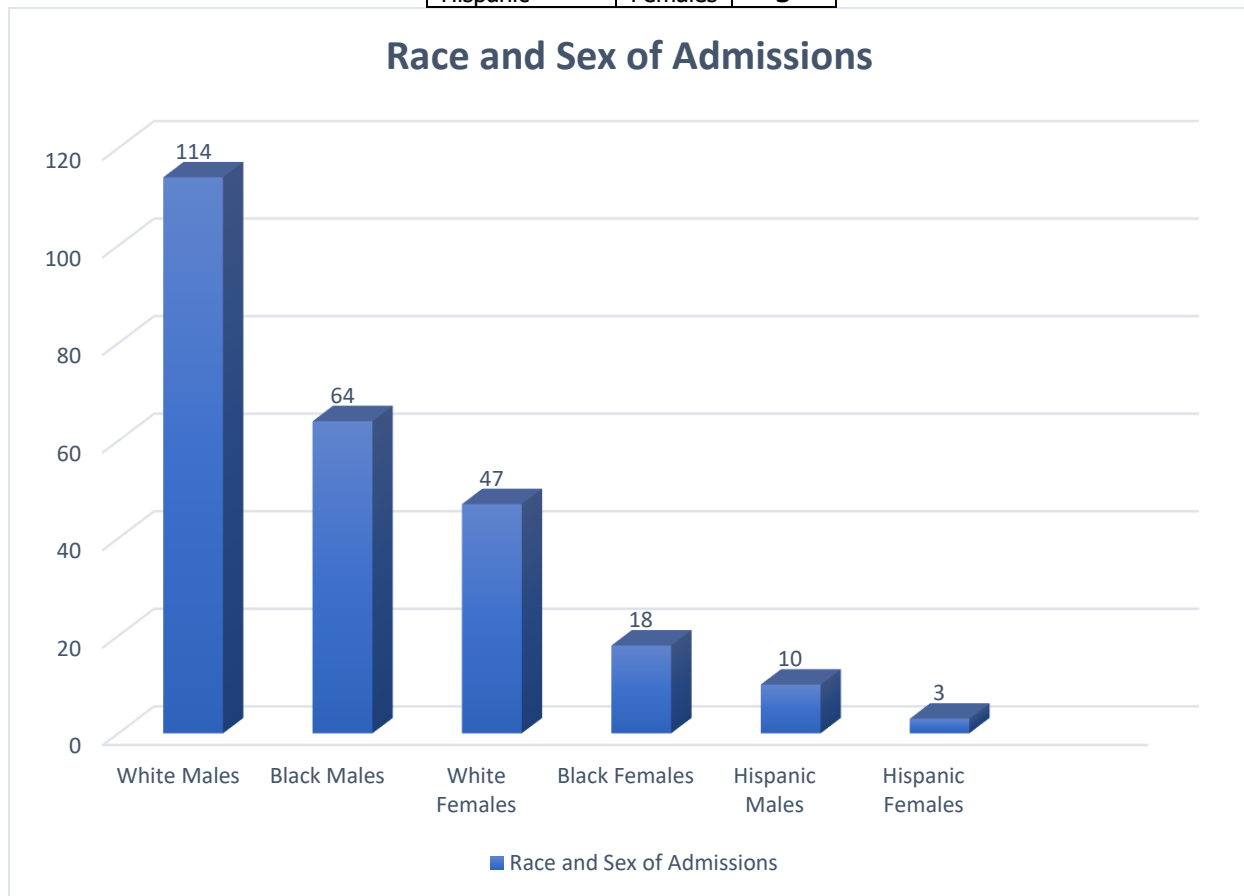


### Race and Sex of Admissions

White males outnumbered every other classification in this subsection at 114 admissions. Black males followed with 64 admissions. White females numbered 47 admissions and Black females numbered 18 admissions. There were 10 Hispanic male admissions and 3 Hispanic female admissions. Table 6 provides the number of admissions for 2021 based on sex and race.

**Table 6**

<b>Race</b>	<b>Sex</b>	<b>Total</b>
White	Males	<b>114</b>
White	Females	<b>47</b>
Black	Males	<b>64</b>
Black	Females	<b>18</b>
Hispanic	Males	<b>10</b>
Hispanic	Females	<b>3</b>

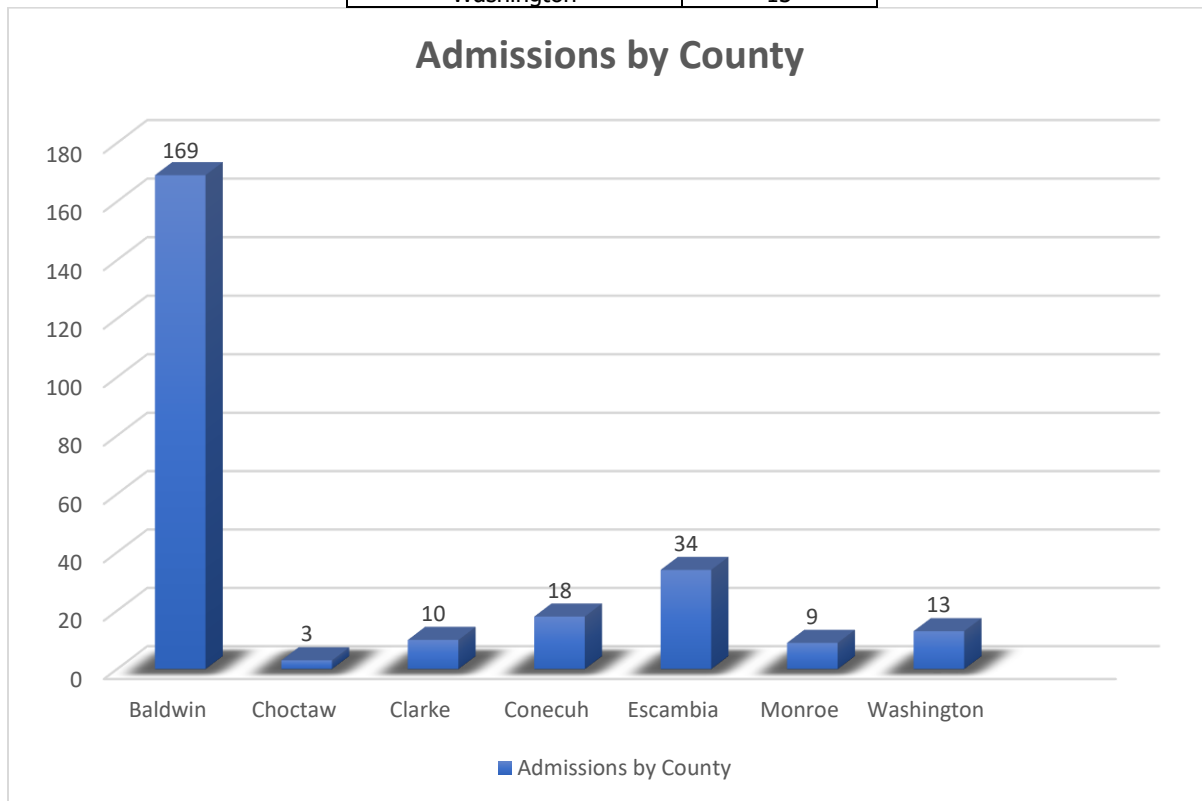


### Admissions by County

Baldwin County accounted for 66% of the total admissions for the year with 169 intakes. All other counties provided 87 intakes for the year of 2021. Table 7 provides the number of intakes per county in this subsection.

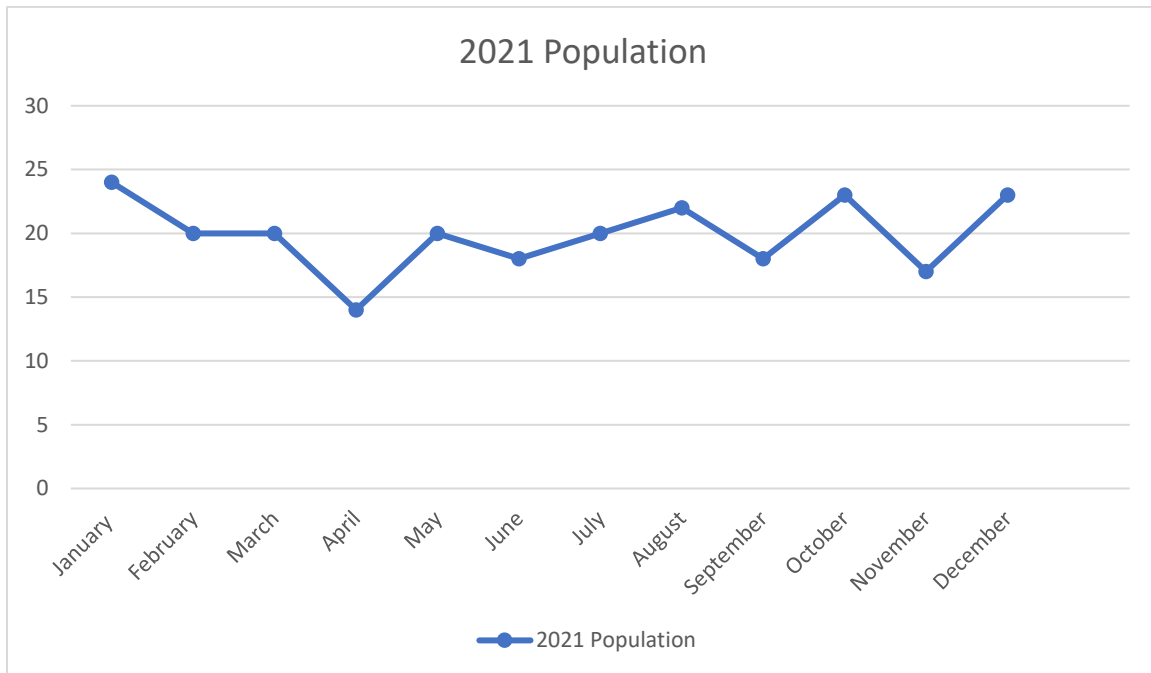
**Table 7**

County	Admissions
Baldwin	169
Choctaw	3
Clarke	10
Conecuh	18
Escambia	34
Monroe	9
Washington	13



## Average Population per Month

Juveniles detained in 2021 spent on average 30 days incarcerated at JDC. The longest stay for a male juvenile was 303 days and the longest stay for a female was 111 days. The chart below denotes the average population per month for the year of 2021.



## Overview of Operations

The Baldwin County Regional Juvenile Detention Center had 0 escapes for the year of 2021. The facility instituted eighty-six 24-hour lockdowns during the year for behavior problems. Eleven juveniles received 48-hour room confinements and forty-one juveniles received 72-hour room confinements for major behavior issues.

We had no emergency transports to the hospital in 2021. The facility conducted routine fire drills throughout the year with no fire or safety incidents to report.

All residents were well cared for throughout the year. There were 230 health histories. 152 residents were on medication and 75 juveniles were on psychotropic medications. 25 residents were seen by the doctor.

There were 27 juveniles on suicide watch this year. The facilities suicide screening scale has been instrumental in recognizing suicidal ideations.

The facility has continued to receive the meals during the week from the Baldwin County High School. Meals provided include breakfast, lunch and dinner during the week, with the jail providing weekend and holiday meals or whenever school is not in session. The cost per meals increased .25 per meal from the prior year with breakfast being \$2.50 per meal and lunch and dinner being \$4.25. The jail remained the same as the previous year with each meal costing \$3.25.

All residents that are housed over 24 hours were placed in the classroom immediately following their 72-hour quarantine period. The Baldwin County Board of Education provides one full time teacher and one part-time special education teacher. The school day consists of 5 periods of learning covering the required curriculum totaling 360 minutes per day. The resident's grades while at the center are transferred to their home school upon release from detention. The residents receive at least one hour per day for physical education and at least two hours per day of leisure time.

The facility provides the juveniles a library and affords them the opportunity to check out books daily. The facility continues to add numerous books throughout the year, including Spanish versions. The facility offers religious services during the week from various organizations and volunteers, however, this had to be delayed due to the Covid-19 outbreak.

The Department of Youth Services conducted a partial audit of 199 standards during the year of 2021 with 198 being in full compliance resulting in a 99% score.

The staff has received meaningful trainings during the year at least once every month with the focus being on safety and security of staff and juveniles, with many trainings conducted virtually due to the pandemic.

The facility continues to utilize a video conference system for 72-hour hearings and visitation due to the pandemic.

The facility had one outbreak of Covid-19 during the last month of December with 4 juveniles and 3 staff testing positive. The facility continues the use of precautions in response to the pandemic. These include requiring all staff and visitors to wear a mask. The facility has also acquired a disinfectant spray fogger for use against the Covid 19 virus. All new juvenile intakes are quarantined for 3 days and are offered a mask whenever they are out of their rooms.

We had citizen/community involvement with MFUGE providing onsite ministry and interaction with the juveniles.

The facility generated \$55,465.00 of additional revenue in 2021 for providing per diem beds to contract counties utilizing beyond their contracted bed space.

The facility received \$49,398.80 in supplement from the Child Nutrition Program in 2021.

The facility did not go over capacity in 2021.

## PREA

During the year there were no non-consensual youth on youth sexual acts reported. This remained constant from last year as no acts were reported.

During the year, there were no allegations of staff sexual misconduct reported. This remained constant from last year as no acts were reported.

During the year there was one act of sexual harassment reported. This report was investigated and found to be unfounded. This remained the same as the prior year in which one case was reported.

In comparing the data from last year to this year, there was no corrective action taken.

The facility continues training of staff on PREA topics monthly. The staff have been trained on various topics on preventing sexual abuse. The camera system continues to provide visual observation throughout the facility to minimize blind spots or problem areas. The residents receive PREA education through facility flyers, posters, and a video.

There were no corrective actions taken during the year.

*Ron Ballard*

Approved by: \_\_\_\_\_

Ron Ballard

Director

Baldwin County Regional Juvenile Detention Center