



# Baldwin County Regional Juvenile Detention Center

---

2023 ANNUAL REPORT

Jana Murphy, Director  
BALDWIN COUNTY | ALABAMA

# 2023 ANNUAL REPORT

Baldwin County Regional Juvenile Detention Center

---

## Table of Contents

History and Philosophy .....2

Organizational Chart .....3

Alleged Violations of Criminal Statutes .....4

Admissions .....7

Overview of Operations .....11

## History and Philosophy

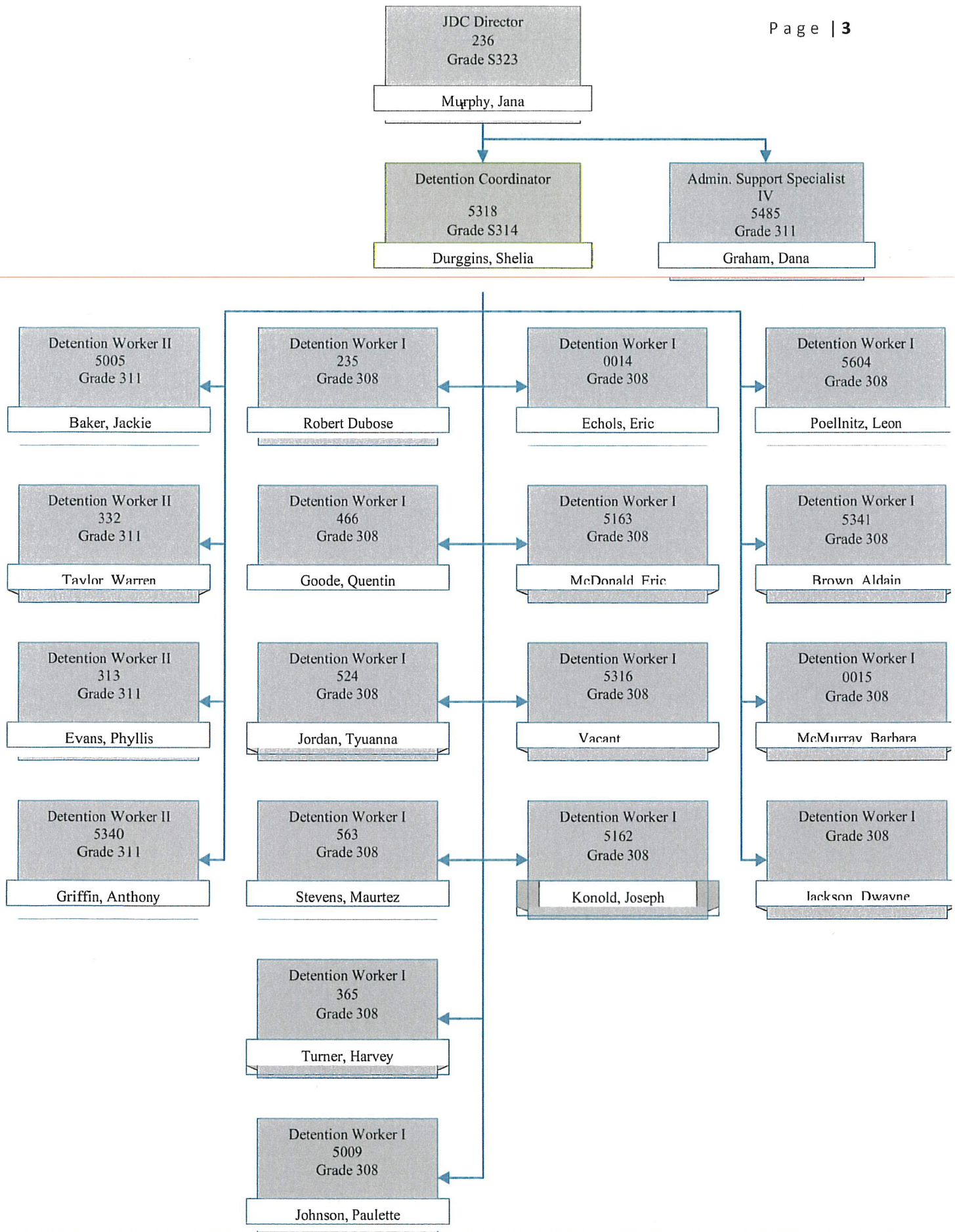
The Baldwin County Regional Juvenile Detention Center was created by an act of the legislature in 1990. The act authorized the Baldwin County Commission to construct and operate the facility. It also named the facility the Phyllis S. Nesbit Building after the first elected female juvenile judge of Baldwin County.

The construction of the building began in July of 1991 and was completed in April of 1992. The facility began operation on June 2, 1992.

The legislature established the Alabama Department of Youth Services in September of 1973 with the responsibility of establishing minimum standards for juvenile detention facilities. The Department of Youth Services licensed the Baldwin County Regional Juvenile Detention Center in June of 1992. The facility acts as a regional facility and serves five other counties and their juveniles.

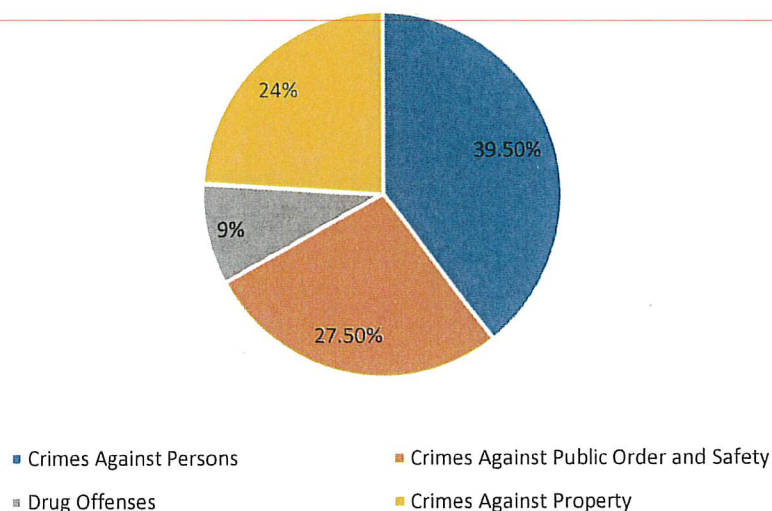
The purpose of the Baldwin County Regional Juvenile Detention Center is to provide temporary care of delinquent children or children alleged to be delinquent in secure custody pending court dispositions or transfer to a residential facility for further care of a child adjudicated to be delinquent.





Crimes Against Persons constituted the largest percentage of juveniles detained in 2023. Crimes Against Public Order and Safety was the second largest category constituting detained juveniles followed by Crimes Against Property and Drug Offenses. Males outnumbered females in all four subsections.

### Alleged Violation of Criminal Statutes



### Crimes Against Persons

Juveniles detained for allegedly committing offenses against other persons represented the largest percentage, 39.5% percent of the four subsections. Domestic Violence charges (71) represented the largest portion of the entries in this subsection totaling (124). Table 1 provides a list of the delinquencies for which juveniles were detained in this subsection.

**Table 1**

Crimes Against Persons	Male	Female	Total
Assault	17	2	19
Attempted Murder	1	0	1
Murder	0	0	0
Criminally Negligent Homicide	0	0	0
Domestic Violence	50	21	71
Harassment	16	2	18
Indecent Exposure	0	0	0
Intimidating a Witness	0	0	0
Menacing	1	0	1
Rape	1	0	1
Robbery	7	0	7
Sexual Abuse	1	0	1
Sexual Misconduct	1	0	1
Shooting into an Occupied Dwelling	2	0	2
Sodomy	1	0	1
Harassing Communications	0	1	1
<b>Total</b>	<b>98</b>	<b>26</b>	<b>124</b>

## Crimes Against Property

In 2023, Crimes Against Property represented 24% percent of the four subsections. Entries for males outnumbered those for females in this subsection. Criminal Mischief, Receiving Stolen Property and Theft of Property accounted for nearly three-fourths of the 73 total entries in this subsection. Table 2 provides the list of delinquencies for which juveniles were detained in this subsection.

**Table 2**

<b>Crimes Against Property</b>	<b>Male</b>	<b>Female</b>	<b>Total</b>
Arson	0	0	0
Breaking and Entering	17	4	21
Burglary	9	0	9
Criminal Mischief	12	8	20
Possession of Burglary Tools	0	0	0
Receiving Stolen Property	9	1	10
Theft of Property	6	0	6
Unauthorized Use of Motor Vehicle	3	0	3
Criminal Trespass	2	2	4
<b>Total</b>	<b>58</b>	<b>15</b>	<b>73</b>

## Crimes Against Public Order and Safety

Juveniles detained for allegedly committing offenses against Public Order and Safety represented the second largest total, 27.5% of delinquencies allegedly committed by juveniles detained. Escape (30) represented the largest portion of the entries in this subsection totaling 86. Entries for males outnumbered those for females in this subsection. Table 3 provides the list of delinquencies for which juveniles were detained in this subsection.



**Table 3**

<b>Crimes Against Public Order and Safety</b>	<b>Male</b>	<b>Female</b>	<b>Total</b>
Animal Cruelty	0	0	0
Attempting to Elude	9	2	11
Carrying Concealed Weapon	1	0	1
Disseminating Obscene Material	0	0	0
Disorderly Conduct	4	0	4
D.U.I.	1	1	2
Escape	18	12	30
Giving False Info to Police	2	0	2
Making a Terrorist Threat	3	0	3
Obstructing Governmental Operations	4	1	5
Possession Forged Instrument	1	1	2
Public Intoxication	1	0	1
Reckless Endangerment	1	0	1
Resisting Arrest	4	1	5
Tampering with Evidence	0	0	0
Possession of a Firearm	16	3	19
<b>Total</b>	<b>65</b>	<b>21</b>	<b>86</b>

## Drug Offenses

Juveniles detained for committing Drug Offenses represented the lowest total, 9% of the total delinquencies allegedly committed by juveniles detained. Possession of Marijuana (13) accounted for the majority of the 28 total entries in this subsection. Entries for males outnumbered those for females in this subsection. Table 4 provides the list of delinquencies for which juveniles were detained in this subsection.

**Table 4**

<b>Drug Offenses</b>	<b>Male</b>	<b>Female</b>	<b>Total</b>
Illegal possession of Prescription Drugs	0	0	0
Possession of Drug Paraphernalia	3	4	7
Possession of Marijuana	9	4	13
Unlawful possession/distribution of Controlled Substance	8	0	8
<b>Total</b>	<b>20</b>	<b>8</b>	<b>28</b>

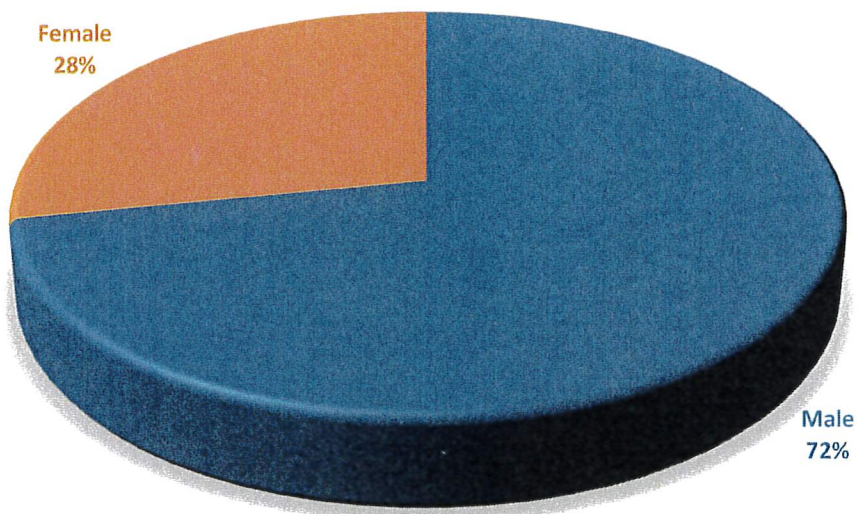
## Admissions

The Baldwin County Regional Juvenile Detention Center received a total of 314 admissions serving 7 counties: Baldwin, Choctaw, Clarke, Conecuh, Escambia, Monroe and Washington. Table 5 provides a list of male and female intakes denoting that of the 256 admissions, 188 were male and 68 were female.

**Table 5**

<b>Sex</b>	<b>Number of Admissions</b>
Male	226
Female	88
<b>Total</b>	<b>314</b>

### ADMISSIONS BY SEX



### Race and Sex of Admissions

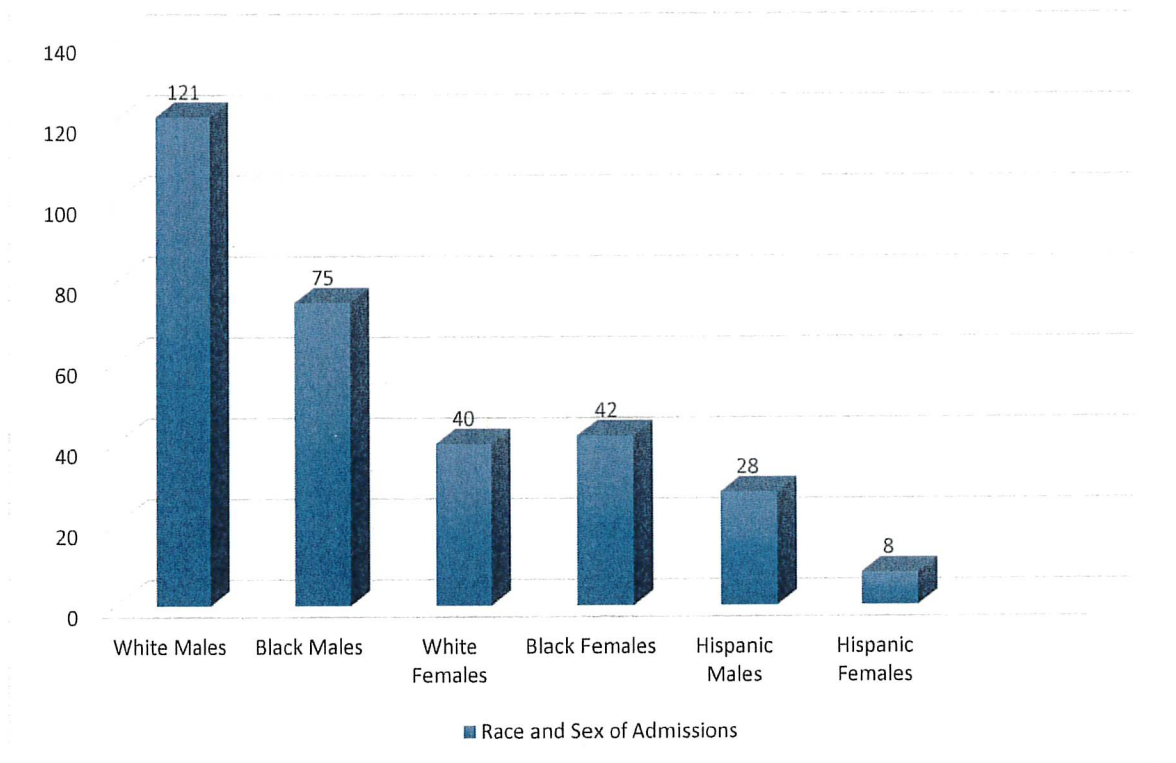
White males outnumbered every other classification in this subsection at 121 admissions. Black males followed with 75 admissions. White females numbered 40 admissions and Black females numbered 42 admissions. There were 28 Hispanic male admissions and 8 Hispanic female admissions. Table 6 provides the number of admissions for 2023 based on sex and race.



**Table 6**

<b>Race</b>	<b>Sex</b>	<b>Total</b>
White	Males	<b>121</b>
White	Females	<b>40</b>
Black	Males	<b>75</b>
Black	Females	<b>42</b>
Hispanic	Males	<b>28</b>
Hispanic	Females	<b>8</b>

### Race and Sex of Admissions



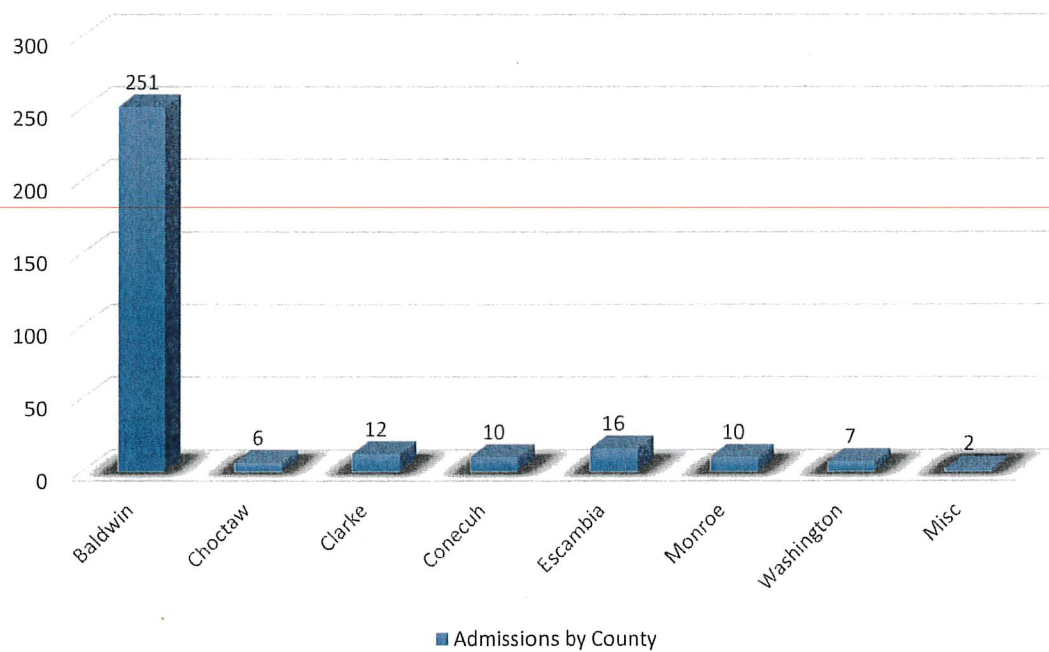
### Admissions by County

Baldwin County accounted for 80% of the total admissions for the year with 314 intakes. All other counties provided 63 intakes for the year of 2023. Table 7 provides the number of intakes per county in this subsection.

**Table 7**

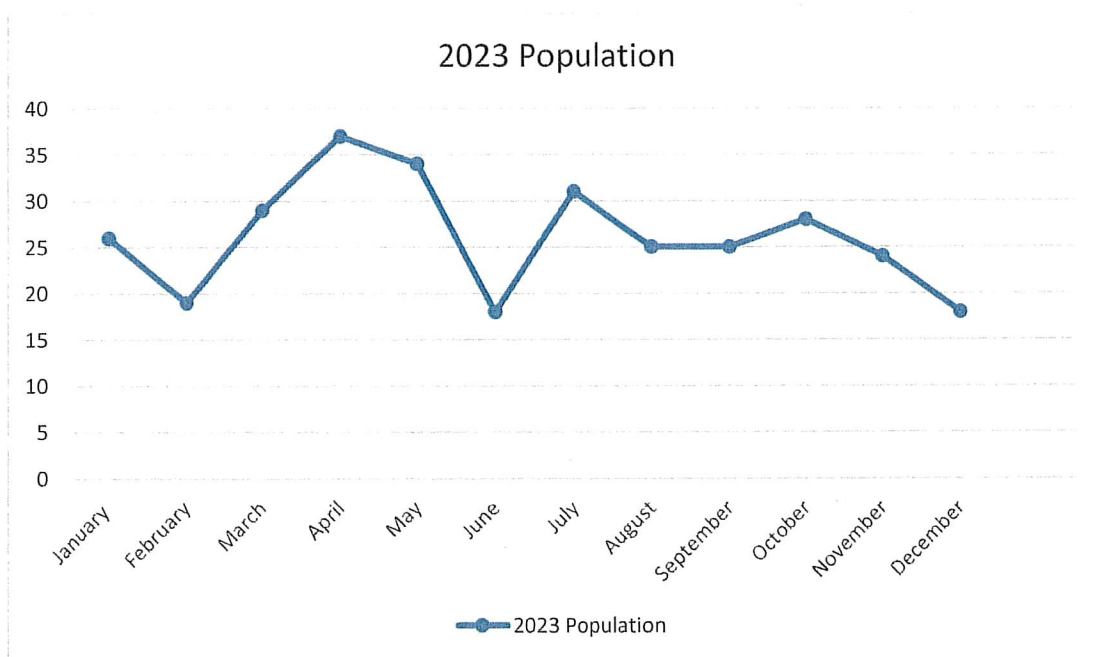
<b>County</b>	<b>Admissions</b>
Baldwin	251
Choctaw	6
Clarke	12
Conecuh	10
Escambia	16
Monroe	10
Washington	7
Misc.	2

## Admissions by County



## Average Population per Month

Juveniles detained in 2023 spent on average 21 days incarcerated at JDC. The longest stay for a male juvenile was 204 days and the longest stay for a female was 67 days. The chart below denotes the average population per month for the year 2023.





## Overview of Operations

The Baldwin County Regional Juvenile Detention Center had 0 escapes for the year of 2023. The facility instituted 120 twenty-four-hour lockdowns during the year for behavior problems. Twenty-one juveniles received 48-hour room confinements and 31 juveniles received seventy-two-hour room confinements for major behavior issues.

We had three emergency transports to the hospital in 2023. The facility conducted routine fire drills throughout the year with no fire or safety incidents to report.

All residents were well cared for throughout the year. There were 301 health histories. Two hundred and forty-four residents were on medication and one hundred and ninety-nine juveniles were on psychotropic medications. Eighty-six residents were seen by the doctor.

There were fifty-nine juveniles on suicide watch this year. The facilities suicide screening scale has been instrumental in recognizing suicidal ideations.

The facility has continued to receive resident meals during the week from the Baldwin County High School. Meals provided include breakfast, lunch and dinner during the week, with the jail providing weekend and holiday meals or whenever school is not in session. The cost per meals remained the same as the previous year.

All residents that are housed over 24 hours were placed in the classroom immediately. The Baldwin County Board of Education provides two certified full-time teachers. One of the teachers is certified in special education. They also provide one full-time registrar who enrolls residents and forwards grades to the resident's home school upon release or to education departments of the programs to which they are transferred. The school day consists of 5 periods of learning covering the required curriculum totaling 360 minutes per day. Residents participate in one hour of large muscle activity during the school day and two hours on holidays and weekends. Residents also participate in at least two hours per day of structured leisure activities.

The facility provides residents with access to a library and affords them the opportunity to check out books daily. The facility continues to add numerous books throughout the year, including Spanish versions. The facility offers religious services during the week from various organizations and volunteers; however, this has been on a limited basis due to Covid-19 concerns. During the summer residents participated in recreation and religious services sponsored by MFUGE which is sponsored by the Southern Baptist Association.

The Department of Youth Services conducted a partial audit of 199 standards during the year of 2023 with 198 being in full compliance resulting in a 99% score.

The staff received their required training hours during the year. Required employee training included a range of topics, juvenile rights, safety and security, behavior management, CPR/AED First Aid, Controlled Force etc.

The facility generated \$16,560.00 of additional revenue in 2023 for providing per diem beds to contract counties utilizing beyond their contracted bed space.

The facility received \$70,859.28 in supplement from the Child Nutrition Program in 2023.

The facility went over capacity one time for less than 24 hours in 2023.

## PREA

During the year there were no non-consensual youth on youth sexual acts reported. This remained constant from last year as no acts were reported.

During the year, there were no allegations of staff sexual misconduct reported. This remained constant from last year as no acts were reported.

During the year there was one act of sexual harassment reported. This report was investigated and found to be unfounded. This remained the same as the prior year in which one case was reported.

In comparing the data from last year to this year, there was no corrective action taken.

The facility continues training of staff on PREA topics monthly. The staff have been trained on various topics on preventing sexual abuse. The camera system continues to provide visual observation throughout the facility to minimize blind spots or problem areas. The residents receive PREA education through facility flyers, posters, and a video.

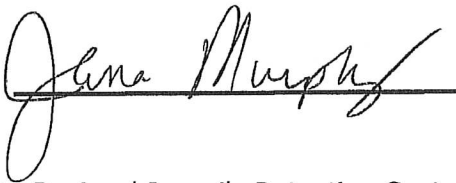
There were no corrective actions taken during the year.

Approved by:

Jana Murphy

Director

Baldwin County Regional Juvenile Detention Center

A handwritten signature in black ink, appearing to read "Jana Murphy", is written over a horizontal line. The signature is fluid and cursive.