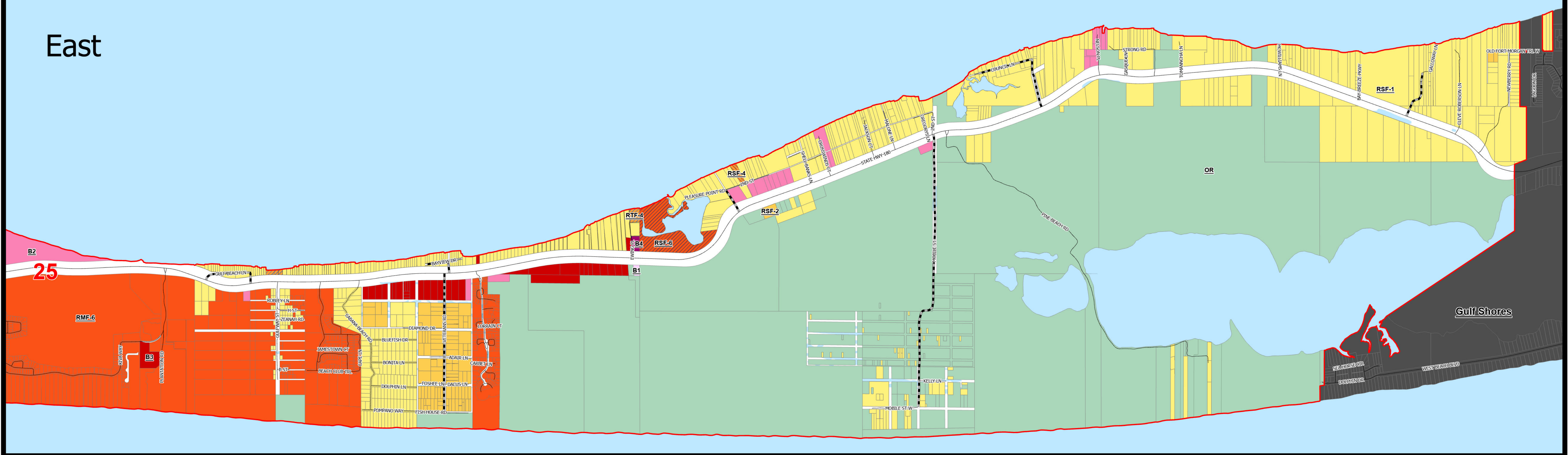
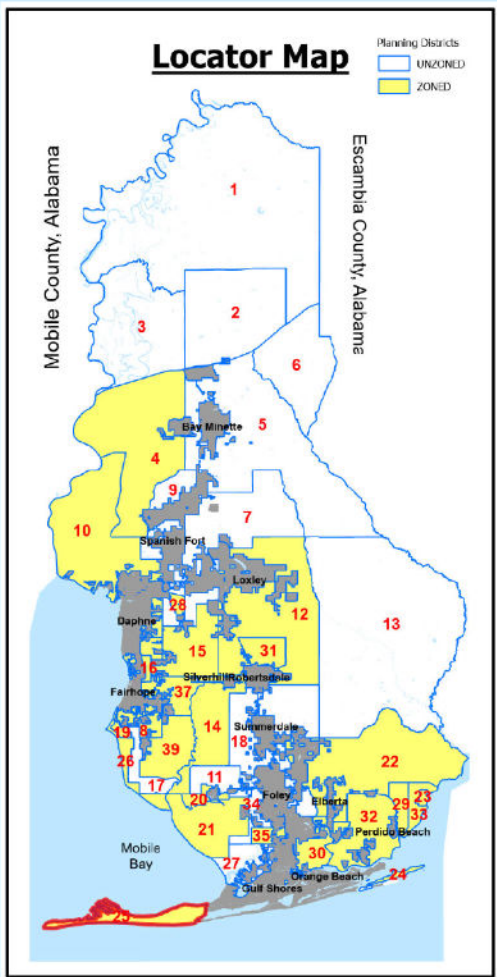


PLANNING DISTRICT 25

East



West



Legend

Planning Districts	311 Streets	Rural District (RD)	Residential Single Family District (RSF-1)	Residential Single Family District (RSF-6)	Base Community Zoning District (BCZ)	Recreational Vehicle Park District (RV-2)	Limited Business District (LB)
Water	County Maintained Roads	Rural Agricultural District (RA)	Residential Single Family District (RSF-2)	Residential Single Family District (RSF-4)	Marine Recreation District (MR)	Professional Business District (P-2)	Light Industrial District (I-2)
City Limits	Road	Conservation Resource District (CR)	Residential Single Family District (RSF-3)	Residential Multiple Family District (RMF-4)	Outdoor Recreation District (OR)	Neighborhood Business District (N-2)	General Industrial District (I-2)
Tax Parcels	Unpaved	Residential Single Family Estate District (RSE-1)	Residential Single Family District (RSF-4)	High Density Residential District (HDR)	Tourist Resort District (TR)	General Business District (B-3)	Major Commercial District (C-4)
		Residential Single Family District (RSF-5)	Residential Two Family District (RTF-4)	Residential Manufactured Housing Park District (RMH)	Recreational Vehicle Park District (RV-1)		

Scale: 0 0.13 0.25 0.5 0.75 1 Miles

North Arrow: N

Print Date: April 5, 2024

On June 10, 1992, a majority of qualified electors in Planning District 25 voted to institute County Zoning. On November 16, 1995, the County Commission adopted the Planning District 25 Zoning Map and Ordinance.

BALDWIN COUNTY, ALABAMA
Planning and Zoning Department

The information contained in this representation of digital data distributed by the Baldwin County Commission's Planning and Zoning Department is derived from a variety of public and private sources and is considered to be dependable. However, the accuracy, completeness, and currency thereof are not guaranteed. The Baldwin County Commission makes no warranty, expressed or implied, as to the accuracy, completeness, or currency of the information or data contained in this representation or generated from the County Geographic Database for any particular purpose. Additionally, the Baldwin County Commission or any agent, servant, or employee thereof assume no liability associated with the use of the data, and assume no responsibility to maintain it in any manner or form. For more information concerning this map call 251.588.5555.