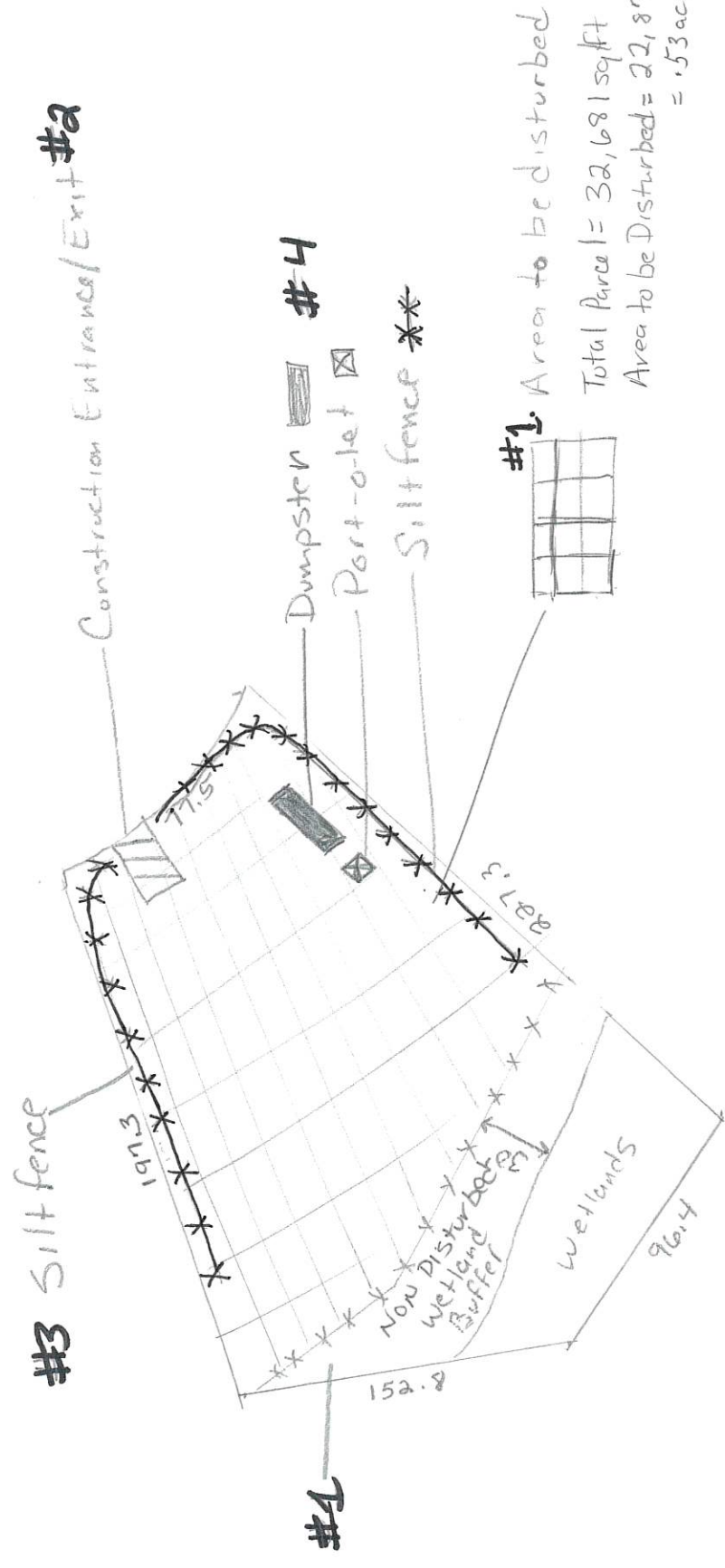


Simplified CBMPP - Example

1. Save existing vegetation - Label area to be disturbed and list acreage or square feet to be disturbed.
2. Show construction entrance/exit
3. Show siltfence and other sediment controls
4. Show dumpster+port-a-let locations
5. Describe how disturbed areas will be permanently stabilized.
6. All BMPs will be inspected + maintained as needed.



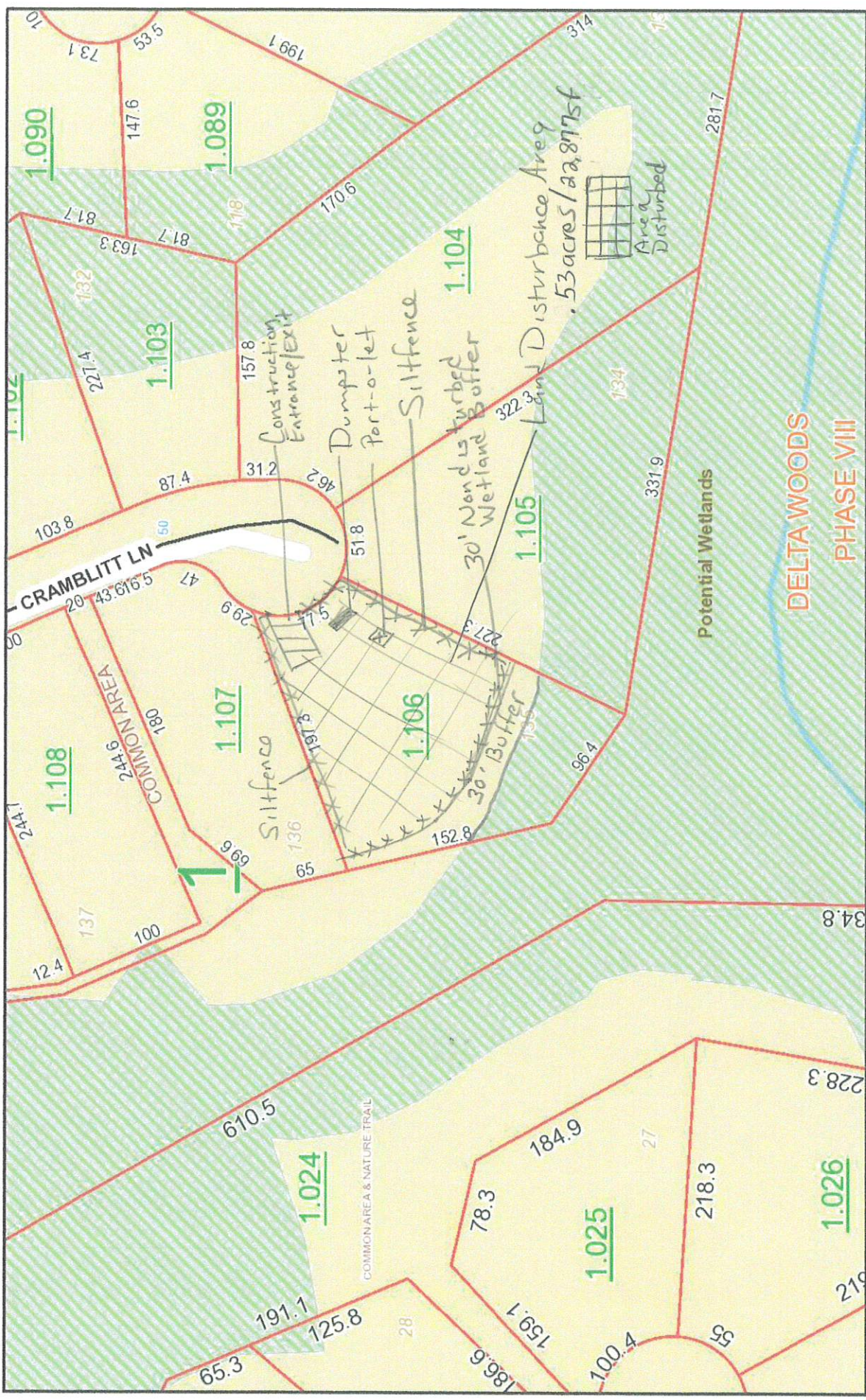
#6 All BMPs will be inspected + maintained.

#5 Permanent Stabilization will be achieved by sodding all disturbed areas.

1" = 130'

Simplified CBMPP - Example

Viewer Map



June 21, 2022

1:1,413

0 65 130 260 ft
0 20 40 80 m

Sources: Esri, HERE, Garmin, USGS, Intermap, INCREMENT P, NRCan, Esri Japan, METI, Esri China (Hong Kong), Esri Korea, Esri (Thailand),

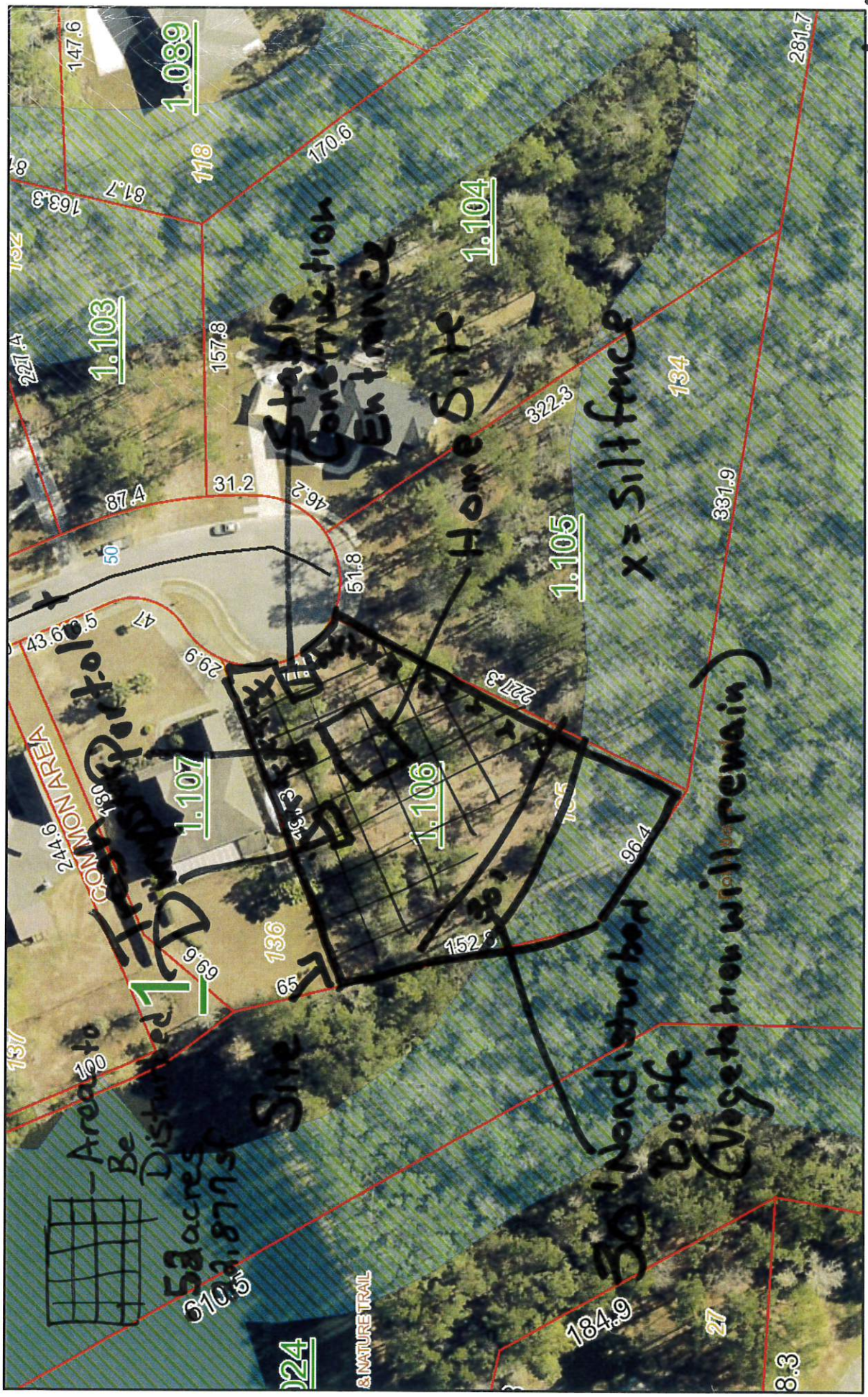
- Misc
- Coastal Control Line
- Conflicts
- Parcels
- Lot Lines
- County Boundary
- Centerlines
- Potential Wetlands
- Potential Wetlands

- All disturbed areas will be sodded for permanent stabilization

Example: Simplified

CBMPP

Viewer Map



June 17, 2022

- Misc
- Parcels
- Centerlines
- Coastal Control Line
- Lot Lines
- Potential Wetlands
- Conflicts
- County Boundary

- Brps will be maintained & inspected
 - Site will be seeded upon completion