








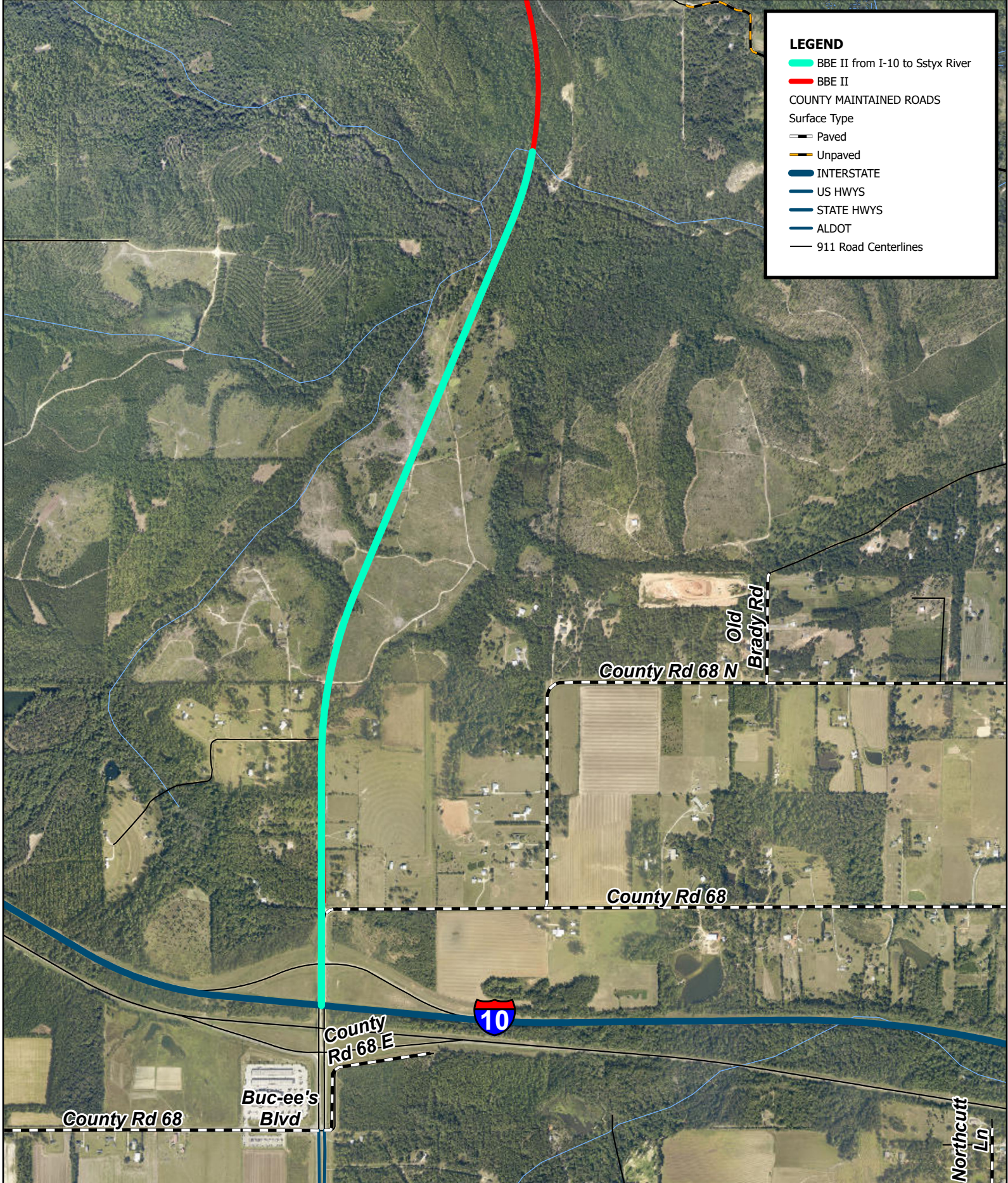


**LEGEND**

-  BBE II from I-10 to Styx River
-  BBE II
- COUNTY MAINTAINED ROADS
- Surface Type
  -  Paved
  -  Unpaved
-  INTERSTATE
-  US HWYS
-  STATE HWYS
-  ALDOT
-  911 Road Centerlines



# Baldwin County Highway Department

## Right of Way Acquisition for BBE II from I-10 to Styx River

